



Originally published as:

Lotze-Campen, H., Müller, C., Bondeau, A., Rost, S., Popp, A., Lucht, W. (2008): Global food demand, productivity growth, and the scarcity of land and water resources: a spatially explicit mathematical programming approach. - *Agricultural Economics*, 39, 3, 325-338.

DOI: [10.1111/j.1574-0862.2008.00336.x](https://doi.org/10.1111/j.1574-0862.2008.00336.x)

Journal: <http://www3.interscience.wiley.com/journal/117962754/home>

1 Title:

2 **Global food demand, productivity growth and the scarcity of land and water resources:**
3 **a spatially explicit mathematical programming approach**

4 Authors: Hermann Lotze-Campen, Christoph Müller, Alberte Bondeau, Stefanie Rost,
5 Alexander Popp, Wolfgang Lucht

6 Affiliations (all authors): Potsdam Institute for Climate Impact Research (PIK),
7 PO Box 60 12 03, 14412 Potsdam, Germany

8 Corresponding author: Hermann Lotze-Campen, Tel. +49-331-2882699,
9 Fax +49-331-288 2620, E-mail: lotze-campen@pik-potsdam.de

10 *[Accepted for publication in Agricultural Economics, June 2008]*

11 **Abstract**

12 In the coming decades, an increasing competition for global land and water resources can be
13 expected, due to rising demand for food and bio-energy production, biodiversity conservation
14 and changing production conditions due to climate change. The potential of technological
15 change in agriculture to adapt to these trends is subject to considerable uncertainty. In order to
16 simulate these combined effects in a spatially explicit way, we present a Model of
17 Agricultural Production and its Impact on the Environment (MAgPIE). MAgPIE is a
18 mathematical programming model covering the most important agricultural crop and
19 livestock production types in 10 economic regions worldwide at a spatial resolution of three
20 by three degrees, i.e. approximately 300 by 300 km at the equator. It takes regional economic
21 conditions as well as spatially explicit data on potential crop yields, land and water constraints
22 into account and derives specific land-use patterns for each grid cell. Shadow prices for
23 binding constraints can be used to value resources for which in many places no markets
24 exist, especially irrigation water. In this paper we describe the model structure and validation.
25 We apply the model to possible future scenarios up to 2055 and derive required rates of
26 technological change (i.e. yield increase) in agricultural production in order to meet future
27 food demand.

28

29 Keywords: Agricultural water use, Global food projections, Land use change,
30 Mathematical programming, Spatial modeling, Technological change

31 JEL classifications: Q24, Q25, C61, F15

1 **1. Global land-use challenges in the 21st century**

2 World population will grow to about 10-14 billion people by the year 2100, with a median
3 projection at 8.8 billion for the year 2050 (IPCC, 2000; Lutz et al., 2001). As income rises,
4 people tend to consume more calories in total, and the share of animal calories increases.
5 Global meat consumption can be expected to rise by up to 3 percent annually over the next
6 decades (Keyzer et al., 2001). While global food supply may still outpace demand up to 2020,
7 growth rates in production are likely to slow down in the longer run (Rosegrant et al., 1997;
8 Harris and Kennedy, 1999). The potential of biotechnology and genetic engineering for
9 increasing agricultural yields remains unclear and subject to a strong public debate (Qaim and
10 Zilberman, 2003). Moreover, the total land area available for agricultural production will be
11 increasingly constrained by land requirements for other purposes, like infrastructure
12 development, urbanization, bio-energy production, or biodiversity protection (Sands and
13 Leimbach, 2003), but also by soil degradation (Oldeman et al., 1990; McNeill and
14 Winiwarter, 2004). In addition to land constraints, water may pose a serious limitation to
15 future global food supplies. Irrigated areas account for nearly two-thirds of world rice and
16 wheat production. Rising irrigation output per unit of land and water is essential to feed
17 growing populations. However, the size of potential water savings in agricultural irrigation
18 systems is unclear. While specific water uses can be made more efficient through better
19 technology, the potential overall savings in many river basins are probably much smaller,
20 because much of the water currently lost from irrigation systems is re-used elsewhere
21 (Rosegrant and Cai, 2003). The future global challenge with respect to agriculture and water
22 is that over the next 25 years food production has to be increased by about 40 percent while
23 reducing the renewable water resources used in agriculture by 10-20 percent (Rijsberman,
24 2001). An additional constraint to agricultural production in the second half of the 21st century
25 is global climate change. A rise in atmospheric CO₂-levels and a corresponding rise in global

1 temperatures will not only affect plant growth and yields, but also alter the regional patterns
2 of precipitation and water availability as well as land erosion and fertility. Regional impacts
3 of climate change vary quite significantly, with tropical regions potentially suffering from
4 droughts. The combined effects of various changes are still highly uncertain (IPCC, 2007).
5 Global land-use patterns will change in the future, reacting to the pressures described above.
6 Projecting their future development is important to study both their impacts on the Earth
7 System as well as the limitations of land use, since freshwater and fertile land are only
8 available in limited amounts.

9 **2. Current status in global land-use modeling**

10 Agricultural land-use patterns are determined by a multitude of environmental, economic and
11 socio-cultural conditions and their interactions. The challenge of projecting future land-use
12 patterns is to account, within one modeling framework, for the socio-economic determinants
13 of agricultural demand as well as for the spatial heterogeneity of the land's suitability for
14 agricultural production. Land suitability for agricultural production is largely determined by
15 environmental conditions, but also by socio-economic factors such as management practices
16 and property rights. Demand, on the other hand, is determined by the number of consumers
17 and their per-capita consumption, which is strongly modulated by their income, market
18 access, and cultural background. The disciplines involved in studying land-use change
19 processes differ significantly in methodologies and data used. Economic sector models
20 typically operate with administrative units, i.e. countries or regional groups of countries in the
21 case of global models. They usually provide little spatial detail on agricultural production and
22 resource constraints. Biophysical models, on the other hand, typically operate on geographic
23 grids. These divide the terrestrial land area into distinct spatial units that are exactly localized.
24 For projecting future land-use patterns, the spatial heterogeneity of land suitability and water
25 availability, which is largely captured by highly resolved geographic grids, is an important

1 factor that strongly determines the size of agricultural area (Müller et al., 2006). The
2 economic structure of land-use models has to harmonize country-level information on food
3 demand and trade flows with gridded information on local production conditions for various
4 crops.

5 Current large-scale approaches to land-use modeling pursue different strategies to project
6 future land-use patterns, as described in more detail by Heistermann et al. (2006). Approaches
7 with a disciplinary focus concentrate on either the supply side or the demand side, while
8 exogenously prescribing or ignoring the other. So-called geographic approaches, like the
9 CLUE (Verburg et al., 1999) and SALU (Stephene and Lambin, 2001) models, concentrate
10 on the supply side and compute land-use patterns based on spatially explicit data on land
11 suitability and on external assumptions on agricultural demand. They are strong in capturing
12 the spatial determination of land use and in quantifying supply side constraints based on land
13 resources. However, they lack the potential to treat the interplay between supply, demand, and
14 trade endogenously.

15 Economic models, on the other hand, as for example different versions of the GTAP model
16 (Hertel, 1997; Lee, 2005) or the WATSIM model (Kuhn, 2003) can consistently address the
17 links between demand, supply and trade via endogenous price mechanisms. However, they
18 account only to a limited extent for physical resource constraints, do not commonly reflect the
19 impact of demand on actual land-use change processes, and rarely represent behavior not
20 reflected by price mechanisms. Land is usually implemented as a constraint in the production
21 of land-intensive commodities, and economic competition of different types of production
22 within one sector is represented endogenously. The simulation of management types as well
23 as the competition for land (and water) among different sectors are supported by the structure
24 of such models but seldom actually included. This limits the representation of land-use
25 change processes.

1 Integrated approaches, accounting for both economic and environmental processes, pursue
2 different strategies. Some employ land allocation schemes, which use demand or price
3 information from economic models to update land-use patterns in detailed environmental
4 models e.g. ACCELERATES (Rounsevell et al., 2003) and IFPSIM/EPIC (Tan et al., 2003).
5 Others improve the representation of resource constraints in detailed economic models, as in
6 the FARM model with respect to land use (Darwin, 1999) and the IMPACT-Water model
7 with respect to water use (Rosegrant et al., 2002). The dynamic coupling of the IMAGE and
8 GTAP-LEI models (Klijn et al., 2005; van Meijl et al., 2006) is the first approach at the global
9 scale that addresses the trade-off between spatial expansion of agricultural production and
10 intensification. GTAP-LEI (van Meijl et al., 2006) introduces land supply curves,
11 representing the impact of land scarcity on land rent. If land rent increases too strongly, the
12 model endogenously switches to intensified agricultural production, which demands higher
13 levels of inputs. This information is transferred to IMAGE (IMAGE team, 2001), where the
14 actual spatially explicit land-use pattern is computed. However, the separate representation of
15 land-use in both models yields the risk of inconsistencies, and agricultural water use is
16 currently not explicitly covered in this linked modeling approach.

17 **3. A Model of Agricultural Production and its Impact on the Environment** 18 **(MAGPIE)**

19 In contrast to these available models, we have developed a mathematical programming
20 approach, which is coupled to a grid-based dynamic vegetation model, to simulate spatially
21 explicit land-use and water-use patterns. This approach provides most flexibility to integrate
22 various types of biophysical constraints into an economic decision-making process, i.e. it
23 provides a straightforward way to link monetary and physical units and processes. Instead of
24 using empirically based, but rather static yield functions, potential crop productivity and
25 related water use is explicitly modeled. The dual solution of the mathematical programming

1 model provides valuable insights into the internal use value of resource constraints. The
2 model computes a shadow price for binding constraints in specific grid cells, e.g. in this case
3 related to land and water availability, reflecting the amount a land manager would be willing
4 to pay for relaxing the constraint by one unit.

5 Our globally applicable land-use model MAgPIE is a non-linear programming model with a
6 focus on agricultural production, land and water use. A technical description of the model is
7 provided in the appendix. The information flow in our coupled modeling approach is shown
8 in Figure 1.

9

10 [Insert Figure 1 about here]

11

12 The linear objective function of the land-use model is to minimize total cost of production for
13 a given amount of regional food energy demand. Regional food energy demand is defined for
14 an exogenously given population in ten food energy categories (cereals, rice, vegetable oils,
15 pulses, roots and tubers, sugar, ruminant meat, non-ruminant meat, and milk), based on
16 regional diets (FAOSTAT, 2004). Food and feed energy for the ten demand categories can be
17 produced by 20 cropping activities (temperate cereals for food or feed, maize for food or feed,
18 tropical cereals for food or feed, rice, five oil crops, pulses, potatoes, cassava, sugar beets,
19 sugar cane, vegetables/fruits/nuts, two fodder crops) and 3 livestock activities (ruminant meat,
20 non-ruminant meat, milk). Feed for livestock is produced as a mixture of grain, green fodder,
21 and pasture at fixed proportions. Fiber demand is currently fulfilled with one cropping activity
22 (cotton). Cropland, pasture and irrigation water are fixed inputs in limited supply in each grid
23 cell, measured in physical units of hectares (ha) and cubic meters (m³). Variable inputs of
24 production are labor, chemicals, and other capital (all measured in US\$), which are assumed
25 to be in unlimited supply to the agricultural sector at a given price. Moreover, the model can

1 endogenously decide to "buy" yield-increasing technological change at additional costs, if
2 otherwise there is no feasible solution (i.e. land use pattern) under a given set of resource
3 constraints. This is implemented by multiplying the production activities with a technological-
4 change variable, which makes a large number of the model constraints non-linear.

5 For future projections the model works on a time step of 10 years in a recursive dynamic
6 mode. The link between two consecutive periods is established through the land-use pattern.
7 The optimized land-use pattern from one period is taken as the initial land constraint in the
8 next. If necessary, additional land from the non-agricultural area can be converted into
9 cropland at additional costs.

10 Potential crop yields for each grid cell are supplied by the Lund-Potsdam-Jena dynamic global
11 vegetation model with managed Lands (LPJmL) (Sitch et al., 2003; Bondeau et al., 2007).
12 LPJmL endogenously models the dynamic processes linking climate and soil conditions,
13 water availability and plant growth, and takes the impacts of CO₂, temperature and radiation
14 on yield directly into account. LPJmL also covers the full hydrological cycle on a global
15 scale, which is especially useful as carbon and water-related processes are closely linked in
16 plant physiology (Gerten et al., 2004). Standard LPJmL outputs include changes in net
17 primary production and different fractions of biomass, changes in carbon pools and water
18 balances. This process-based vegetation model with agricultural crops is coupled here for the
19 first time to a land-use allocation model. Potential crop yields for MAgPIE are computed as a
20 weighted average of irrigated and non-irrigated production, if part of the grid cell is equipped
21 for irrigation according to the global map of irrigated areas (Döll and Siebert, 2000). In case
22 of pure rain-fed production, no additional water is required, but yields are generally lower
23 than under irrigation. If a certain area share is irrigated, additional water for agriculture is
24 taken from available water discharge in the grid cell. Water discharge is computed as the

1 runoff generated under natural vegetation within the grid cells and its downstream movement
2 according to the river routing scheme implemented in LPJmL.

3 Spatially explicit data on yield levels and freshwater availability for irrigation is provided on a
4 regular geographic grid, with a resolution of three by three degrees, dividing the terrestrial
5 land area into 2178 discrete grid cells of an approximate size of 300 km by 300 km at the
6 equator. Towards higher latitudes the grid cells become smaller. Each cell of the geographic
7 grid is assigned to one of ten economic world regions: Sub-Saharan Africa (AFR), Centrally-
8 planned Asia including China (CPA), Europe including Turkey (EUR), the Newly
9 Independent States of the Former Soviet Union (FSU), Latin America (LAM), Middle
10 East/North Africa (MEA), North America (NAM), Pacific OECD including Japan, Australia,
11 New Zealand (PAO), Pacific (or Southeast) Asia (PAS), and South Asia including India
12 (SAS). The regions are characterized by data for the year 1995 on population (CIESIN et al.,
13 2000), gross domestic product (GDP) (World Bank, 2001), food energy demand (FAOSTAT,
14 2004), average production costs for different production activities (McDougall, 1998), and
15 current self-sufficiency ratios for food (FAOSTAT, 2005) (Figure 2 and 3). While all supply-
16 side activities in the model are grid-cell specific, the demand side is aggregated at the regional
17 level. That is to say, aggregate demand within each region, defined by total population,
18 average income and net trade, is being met by the sum of production from all grid cells within
19 the region.

20

21 [Insert Figure 2 about here]

22

23 [Insert Figure 3 about here]

24

1 Trade in food products between regions is simulated endogenously, constrained by minimum
2 self-sufficiency ratios for each region. This is to say that some minimum level of domestic
3 demand has to be produced within the region, while the rest can be allocated to other regions
4 according to comparative advantages. If, for instance, a region currently has a self-sufficiency
5 ratio of 1.2 for a certain product, then in future projections this may either be kept constant or
6 gradually reduced over time to account for global trade liberalization.

7 Land conversion activities provide for potential expansion and shifts of agricultural land in
8 specific locations. For the base year 1995, total agricultural land is constrained to the area
9 currently used within each grid cell, according to Ramankutty and Foley (1999). However, if
10 additional land is required for fulfilling demand, this can be taken from the pool of non-
11 agricultural land at additional costs. These land-conversion costs force the model to utilize
12 available cropland first, and land conversion will become relevant only if land becomes scarce
13 in a certain location or if the marginal cost reductions by producing crops on converted land
14 outweigh the costs of conversion. LPJmL computes trends in potential crop yields and
15 irrigation water requirements for the 20th and 21st century, taking climate change impacts
16 into account (Bondeau et al., 2007). Under plausible scenarios of population and income
17 growth, MAgPIE allows for future projections of spatially explicit land-use patterns, for
18 deriving future technological change rates, and for valuating constraints on land and water
19 availability or trade restrictions. Future trends in food demand are computed as a function of
20 GDP per capita based on a cross-country regression (Figure 4).

21

22

[Insert Figure 4 about here]

23

24 Production activities in MAgPIE have been parameterized to conditions in the year 1995,
25 based on data on food consumption, trade, agricultural production, feed use, and land and

1 water requirements (FAOSTAT, 2004, 2005). In order to ensure consistency of the initial
2 database, the net trade position in terms of food energy units of all regions has been
3 determined by balancing the food demand in different categories, total production of major
4 crops and livestock types, and related demand for concentrate feed and green fodder.

5 In addition, the Global Trade Analysis Project (GTAP) database (version 4) (McDougall,
6 1998) is used to define the costs of production for each crop and livestock type. Production
7 costs are region-specific and are calculated by dividing total costs of production (labor,
8 chemicals, capital) from GTAP by the area harvested from FAOSTAT. This provides average
9 production costs per hectare for each production activity in each region. Due to yield variation
10 between the grid cells within each region, this results in considerable spatial variation in
11 production costs per unit food energy produced. Through international trade the regions
12 compete with each other based on their comparative cost advantages. The extent of
13 international trade is controlled by trade constraints, which limit the regional trade balance to
14 a prescribed minimum self-sufficiency rate.

15 Using potential crop yields from LPJmL, the model MAgPIE has been calibrated to represent
16 the share of cropland in total area for each region as well as the shares of individual crops in
17 total cropland (i.e. area harvested) in 1995. Two sets of parameters were used for calibration:

18 (1) Rotational constraints: for each crop type a maximum share in total cropland in each grid
19 cell has been defined. This reflects technological constraints within an average crop rotation.
20 For reasons of pest control certain crops like potatoes or sugar beets usually can be grown
21 only every 3-4 years. This would imply an upper limit of 25-33 percent in the average
22 cropland share. For cereals, rotational constraints are set to 70 percent in most cases.

23 (2) Yield correction at the regional level: potential crop yields as derived by LPJmL differ
24 from actual crop yields observed in the FAO statistics, because crop management is not yet
25 fully reflected in LPJmL simulations. We adjust average yields on the regional level by a

1 regional management factor, but fully maintain yield variability between grid cells as
2 provided by LPJmL. Due to high uncertainty in the global extent of managed grassland,
3 pasture demand for ruminant meat and milk in MAgPIE was calibrated regionally to match
4 with current pasture area, which was derived by Bondeau et al. (2007).

5 **4. Model validation**

6 In order to validate the model, we have conducted a hindcasting exercise from the base year
7 1995 to the year 1970. By comparing the simulated results with observed data from
8 Ramankutty and Foley (1999) and FAOSTAT (2005), we demonstrate the suitability of the
9 model's basic mechanisms. For the validation run we use the same simplifying assumptions as
10 will be used for future projections, in order to make simulations of the past comparable to
11 projections into the future. For example, we simulate changes in food energy demand based
12 on the regression results presented in Figure 4 and on changes in population only. The
13 resulting values of food energy demand compare well with FAO statistics for 1970, i.e. the
14 statistical fit is 0.66, the same as for the regression in Figure 4. Changes in population and
15 income are taken from FAOSTAT (2005) and World Bank (2001). For simplifying matters,
16 trade balances are kept constant at 1995 levels here.

17 To validate the model performance, the simulated changes in total cropland area as well as
18 endogenously determined technological changes rates between 1970 and 1995 are compared
19 with FAO statistics. Shares of cropland in total area at the grid-cell level are compared with
20 data from Ramankutty and Foley (1999), which is arguably the most reliable source of
21 spatially explicit cropland distribution with global coverage. It is important to note, however,
22 that these data are the result of a fitting procedure based on different primary sources,
23 including official statistics as well as remote sensing information. Hence, they are not truly
24 observed land use patterns, and mismatches between MAgPIE results and Ramankutty and
25 Foley (1999) may be due to errors in both data sets.

1 *Cropland share in total area*

2 As a first validation test, we check how well the spatial pattern of cropland shares from the
3 model simulation for 1970 corresponds to observed data. Figure 5 shows the related global
4 maps. Figure 6 provides the corresponding scatter plots for all grid cells, distinguished by
5 model region.

6

7 [Insert Figure 5 about here]

8 [Insert Figure 6 about here]

9

10 With the exception of AFR and MEA, the correlation between simulated and observed
11 cropland shares in the model regions is relatively good for a cross-section regression
12 ($R^2 \geq 0.60$). The overall R^2 for a regression across all 2178 grid cells is 0.90. The largest
13 discrepancies can be observed in AFR and MEA. In the simulated data, these two regions
14 have a comparatively large share of grid cells, where the cropland share is zero. This may
15 partly be explained by inadequate spatial patterns of crop yields simulated by LPJmL in these
16 regions. Another factor may be that market and production structures in poor countries and
17 transition countries are not well represented in the model. With high levels of subsistence
18 agriculture, low levels of productivity, and limited market access, land-use patterns are more
19 diverse than can be represented by broad rotational constraints and aggregate regional
20 demands in our model. Moreover, the type of optimization model employed here tends to
21 specialize production activities. In large regions with low average yields and very uneven
22 yield distributions, the model will concentrate agricultural production in the most productive
23 cells. If a region has a large number of grid cells with very low yields, there is more potential
24 for the model to reduce overall crop area through land-use concentration. This effect becomes
25 evident in our model results especially for AFR and MEA. Despite some region-specific

1 shortcomings, the model, which is calibrated to the year 1995, is capable of projecting the
2 global extent and distribution of agricultural cropland for the year 1970, based on a limited set
3 of socio-economic and biophysical inputs.

4 *Share of different crop types in total cropland*

5 Moreover, the regional average crop mix within the cropland area is also well represented by
6 the model for 1970. Figure 7 shows the correlation between simulated and observed average
7 regional crop mix for all regions. As spatially explicit observations on individual crops are not
8 available for 1970, we can only compare regional averages from our simulations with FAO
9 statistics.

10

11

[Insert Figure 7 about here]

12

13 *Changes in cropland area and average technological change rates*

14 As a second validation test, the changes in total cropland area as well as average regional
15 technological change rates from the model simulation are compared with FAO statistics for
16 the period 1970-1995 (Figure 8a and 8b). According to FAO, the average yield of all crops
17 across the world, weighted by area harvested, has increased by 1.32 percent per year between
18 1970 and 1995, with a minimum of 0.04 percent in FSU and a maximum of 2.6 percent in
19 CPA (i.e. predominantly China). The value for CPA, which may be partly due to the end of
20 central planning, is remarkable as it is equivalent to a doubling of yields within 26 years. The
21 correspondence between simulated and observed changes is relatively good ($R^2 = 0.69$ for
22 area changes, $R^2 = 0.72$ for technological change rates), given the fact that major changes in
23 agricultural, economic and trade policies occurred in most regions during this time period
24 which are not adequately accounted for in the current model version.

1

2

[Insert Figure 8a and 8b about here]

3

4 Taken together, validation results for both the pattern of cropland area as well as the changes
5 in area and yield over time gives us sufficient confidence in the functionality of our model.

6

5. Valuation of water resources

7 Apart from spatially explicit land-use patterns, MAgPIE also allows for valuating biophysical
8 supply side constraints, like water shortages. Figure 9 shows the shadow price for irrigation
9 water in US\$/m³ in 1995 for those cells that are at least partly equipped for irrigation, but
10 where agricultural production is limited by the available level of water discharge. The value
11 of the shadow price indicates a potential reduction in production costs if water availability
12 within this cell would increase by 1 m³. The map highlights regions with very low
13 precipitation, where large-scale agriculture is only possible by using river discharge, like
14 Morocco, Egypt, the Middle East, Pakistan and China.

15

16

[Insert Figure 9 about here]

17

6. Scenario runs on required technological change in the period 1995-2055

19 After having validated the model performance against historical data, we now turn to scenario
20 runs on global land-use changes in the future. Besides changes in population, economic
21 growth and environmental production conditions, the issue of technological change in
22 production (i.e. yield increase) is of crucial importance. This can be tackled in two directions.
23 With most other modeling approaches, this is done by assuming a future trend in productivity

1 growth and then deriving the economic and environmental consequences. In contrast, with the
2 mathematical programming model presented here, the issue can be turned around, and the
3 minimum rate of technological change required to meet certain constraints can be derived.
4 Hence, the main question behind the scenarios described here is: "How much yield increase
5 (or technological change) is required to fulfill future global demand for food under different
6 restrictions on land and water use?"

7 We run the MAgPIE model in six 10-year time steps from 1995 until 2055 in a recursive
8 dynamic manner, where cropping patterns from one period are taken as a starting point for the
9 next period. The model is driven by external scenarios on population growth and GDP growth
10 taken from the SRES A2 scenario (IPCC, 2000). Global population increases up to about 9
11 billion in the year 2055, and average world income per capita reaches about 15,000 US\$ (in
12 1995 purchasing power parity terms). Regional details on the input data used are available
13 upon request. The link between GDP and food energy demand is given by the regression
14 equation described above and in Figure 4.

15 In the baseline scenario, only a minimum of additional land (0.1 percent per decade) is
16 allowed for land conversion and expansion. This basically keeps the cropland area constant
17 over time. Regional trade balances are also kept constant at 1995 levels. In the scenarios
18 presented in this paper, there are no climate impacts on future yields, i.e. relative yield
19 variability between grid cells is constant at 1995 levels.

20 As the explicit connection between land and water use is a special feature of the model, in the
21 second scenario we focus on different types of technological change with regard to water-use
22 intensity. A crucial parameter for our scenarios is the water-saving rate, which determines
23 how much additional water is required if the crop yield per hectare is increased. In the
24 baseline scenario, the water-saving rate is set at 0.5. This implies that a yield increase by 1
25 percent leads to an increase in water use by the plant of 0.5 percent. A range between 0 and 1

1 is in principle possible. If the additional crop yield is produced by exclusively increasing the
2 total biomass production of the plant, the connection between increase in yield and in water
3 use will be very close (i.e. a water-saving rate close to 0). If the structure of the plant is
4 changed through plant breeding, i.e. the share of harvested organ in total biomass (harvest
5 index) is increased, the water-saving rate could be close to 1. A water-saving rate of 1 would
6 imply that the additional yield can be produced with no additional water requirement. Here we
7 compare the baseline scenario to a scenario with low water-saving technological change.

8 In a third scenario we combine the baseline conditions with strong cropland expansion. In
9 each 10-year time step, the model may convert up to 5% of current non-agricultural land into
10 cropland for production (equivalent to a cumulated reduction of non-agricultural land by up to
11 25% over 50 years). The model will expand cropland in the most productive grid cells first,
12 and hence the demand for technological change on the remaining land will be reduced.

13 The resulting rates of technological change for the baseline, the low water-saving scenario
14 and area expansion scenario are presented in Figure 10. The model results are compared with
15 FAO statistics from the period 1970-1995. The numbers describe average regional yield
16 increases per year for all crops over a given period (1995-2055 for the future scenarios).

17

18

[Insert Figure 10 about here]

19

20 Under our chosen baseline conditions on population growth, income growth, and limited
21 scope for cropland expansion, average global crop yields need to increase by about 0.8
22 percent per year until the middle of the century. This is significantly lower than the trend over
23 the last three decades. In most regions the required future rate of change is lower than the
24 observed rate in the past, except for AFR, FSU and MEA. For AFR this reflects rather slow
25 productivity increase in the past, and the expected effects of strong growth in population and

1 income in the future. In FSU the low rate in the past is due to the breakdown of production in
2 the transition period of the 1980s and 1990s. By contrast, in MEA the already strong
3 performance in the past (almost 2 percent per year) even has to be increased in the future,
4 which is mainly due to expected strong population and income growth. Very low future rates
5 in EUR and PAO are mainly due to expected slow population growth (or even decline) in
6 these regions.

7 MEA is the region with the strongest impact of water scarcity, which is reflected in the
8 required increase in yields if technological change is low in water saving. If water availability
9 becomes a binding constraint in the model, it is forced to increase average productivity in all
10 grid cells in the region. Hence, more production is shifted to areas where water is still
11 abundant, until net domestic demand can be met. Annual yield increases by up to 3 percent
12 over several decades are rather high, but historical data for e.g. CPA show that this is
13 possible. The low water-saving scenario shows that under conditions of restricted crop area
14 expansion and limited trade expansion, water will become a binding constraint to food
15 production in certain regions, like MEA, AFR and FSU. One way to overcome the binding
16 constraints is through an increase in water-use efficiency of crops. However, this cannot be
17 achieved quickly as it requires changes in the harvest index through plant breeding, which is
18 time consuming and research intensive. The pressure will certainly rise, when additional
19 demand for land and water arises from future biomass energy production and increased
20 demand for biodiversity conservation.

21 In the area expansion scenario the required rate of technological change is about 60% lower
22 than in the baseline, even zero in EUR, LAM, NAM and PAO. This is, of course, an
23 unrealistic scenario, as in the real world there is increasing demand for land for other
24 purposes, and there are many practical constraints to land expansion. The interesting aspect of
25 our methodology is the fact, that we can make land-use change and land expansion spatially

1 explicit. That is, the land-use changes related to the results in Figure 10 can also be presented
2 as a global map (or even a sequence of maps over time). This adds valuable detail to the plain
3 average numbers from more aggregated modeling approaches. Moreover, in the current
4 scenario, the maximum rate of land conversion is set to be the same for all grid cells.
5 However, we could also prescribe spatially explicit "no-go" areas, e.g. for nature
6 conservation. These options will be explored in future model applications.

7 It should be noted that the derived rates of technological change from the model are on the
8 optimistic side, as the mathematical programming algorithm shows a tendency for regional
9 specialization of production, which leads to an additional increase in average yields. In
10 reality, not all of these yield increases will be achievable. Moreover, it is debatable whether
11 the required yield increases from the model runs can be sustained over several decades. Some
12 currently poor regions, like AFR, MEA, PAS and SAS have to double their average yields in
13 order to meet future demand. Given the current absolute yield levels on worldwide average
14 this does not seem impossible, but it will certainly require higher levels of fertilizer,
15 machinery and energy input as well as research and development on a large scale.

16 **7. Conclusions and outlook**

17 The model MAgPIE computes spatially explicit land-use and water-use patterns with global
18 coverage by combining socio-economic information on population, income, food demand and
19 production costs with spatially explicit environmental data on potential crop yields and water
20 availability for irrigation. By reproducing the historical land-use change between 1970 and
21 1995, we demonstrate the satisfactory overall performance of the model algorithms. The
22 structure of MAgPIE facilitates an integrated environmental-economic assessment.
23 Environmental data are supplied by the Lund-Potsdam-Jena dynamic global vegetation model
24 with managed Lands (LPJmL). Crop functional types in LPJmL represent crop groups with
25 different physiological behavior without distinguishing single crops. This helps to bridge the

1 gap between aggregated economic information on food demand, production costs and
2 simulated crop yields. MAgPIE currently works on a geographic grid with three by three
3 degrees resolution. This is a trade-off between computational feasibility and accounting for
4 sub-regional spatial heterogeneity in land suitability and water availability. LPJmL
5 simulations of terrestrial biogeochemical budgets are robust against reductions in spatial
6 resolution, as shown in Müller and Lucht (2007), but information on spatial heterogeneity is
7 lost when the spatial resolution is reduced. While computational requirements of the
8 optimization software currently prevent finer spatial resolutions, this is a straightforward
9 approach to generate spatially explicit land-use patterns based on an economic rationale.
10 MAgPIE provides essential inputs for assessing the effects of economically driven land-use
11 changes on the terrestrial land area and the biosphere. The derived shadow prices allow for an
12 economic valuation of biophysical constraints to agricultural production. This is unique in
13 globally applicable land-use models, especially as MAgPIE explicitly considers water as an
14 essential input to agricultural production.

15 Another unique feature of our mathematical programming approach is the treatment of
16 technological change. Instead of prescribing expected future trends in yield increase (i.e. area
17 productivity), required minimum rates of technological change are endogenously derived as a
18 residual to solve the model under a large set of spatially-explicit constraints. This is especially
19 important for the analysis of water scarcity, as water constraints become only meaningful at a
20 spatially disaggregated level. Moreover, different types of technological change can be
21 analyzed, which has been demonstrated here for the case of water-use intensity of crop
22 production.

23 MAgPIE in its present form can account for several driving processes of land-use change, i.e.
24 dietary changes and food demand, changes in international trade, restrictions on land
25 expansion, and climate change. Other land-intensive goods, such as timber and bio-energy

1 carriers, can be included in the model without any structural changes. These additional sectors
2 will be included in the next model version, which will then internally compute their
3 competition with food production for fertile land. Furthermore, the model structure supports
4 the inclusion of specific crop management aspects, e.g. a separation of rain-fed and irrigated
5 production or a distinction between different levels of input use for subsistence and market
6 production. However, economic data to parameterize these management aspects are currently
7 scarce.

8 In this paper, the general applicability and functionality of the model has been demonstrated.
9 The mathematical programming technique is powerful, flexible, and computationally
10 efficient, but it tends to underestimate area demand because of specialization in production.
11 This can be partially prevented by technical rotational constraints and constraints on the
12 maximum land-conversion rate. Inherent potentials to account for additional driving processes
13 of land-use change will be the focus of our future work.

1 **8. Appendix: MAgPIE - Model description**

2 Variables

3 *x* level of activity (21 crop activities (ha), 3 livestock activities (ton), 2 land
4 conversion activities (ha), 3 input purchase activities (US\$))

5 *yld_tc* technological change variable

6 Parameters

7 *c* production costs per activity unit (US\$)

8 *tcc* technological change costs

9 *wat_tc* water-saving rate ($0 \leq \text{wat_tc} \leq 1$)

10 *d_food* demand for food energy (GJ)

11 *y_food* food energy delivery (from crops and livestock) (GJ)

12 *y_feed* feed energy delivery (from crops and residues) (GJ)

13 *y_fodd* green fodder energy delivery (from crops) (GJ)

14 *y_land* land delivery (i.e. from conversion activities) (ha)

15 *y_wat* water delivery (i.e. from irrigation activities) (m³)

16 *y_input* variable input delivery (i.e. labor, chemicals, capital) (US\$)

17 *req_feed* feed energy requirement (i.e. per ton of livestock output) (GJ)

18 *req_fodd* green fodder energy requirement (i.e. per ton of livestock output) (GJ)

19 *req_land* land requirements (i.e. cropland, pasture) (ha)

20 *req_wat* water requirements (m³)

21 *req_input* variable input requirements (i.e. labor, chemicals, capital) (US\$)

1 *req_share* area to be considered for rotational constraints (ha)

2 *land_const* available land (cropland, pasture, non-agric.) (ha)

3 *wat_const* available water discharge for irrigation (m³)

4 *max_share* maximum crop share in average rotation (percent)

5 Indices

6 *i* number of economic regions (10)

7 *j* number of grid cells per region (total: 2178 grid cells (3 degree by 3 degree))

8 *k* number of activities (21 crops (*kcr*), 3 livestock (*kli*), 2 land conversion (*klc*), 3 input
9 purchases (*kin*))

10 *l* number of food energy demand categories (10)

11 *m* number of agricultural land types (3) (cropland, pasture, non-agricultural land)

12 *n* number of rotational constraints (10)

13

14 Goal function: Cost minimization (Total costs of production; sum for all *i* regions):

$$15 \quad C = \sum_i \sum_j \sum_k x_{i,j,k} * c_{i,k} + \sum_i yld_tc_i * tcc_i$$

16 subject to:

17 Global constraints:

18 Food energy demand (minimum constraint; for all *l* demand types):

$$19 \quad \sum_i \sum_j \sum_k x_{i,j,k,l} * y_food_{i,j,k,l} * yld_tc_i \geq d_food_{i,l}$$

20 (similar for fiber)

21

1 Regional constraints (for all i regions): (Note: all k activities are included in all constraints, in
2 order to reduce the number of indices; however, many of the parameter values may be zero)

3 Minimum trade balance (regional supply \geq regional demand * self-sufficiency rate):

$$4 \quad \sum_j \sum_k x_{i,j,k} * y_food_{i,j,k} * yld_tc_i \geq d_food_{i,l} * self_sufficiency_{i,l}$$

5 (similar for fiber)

6 Feed energy balance (regional demand \leq regional supply)

$$7 \quad \sum_j \sum_k x_{i,j,k} * (req_feed_{i,k} - y_feed_{i,j,k}) * yld_tc_i \leq 0$$

8 Green fodder balance (regional demand \leq regional supply):

$$9 \quad \sum_j \sum_k x_{i,j,k} * (req_fodd_{i,k} - y_fodd_{i,j,k}) * yld_tc_i \leq 0$$

10 Input purchase balances (regional demand \leq regional supply; for all kin inputs)

$$11 \quad \sum_j \sum_k x_{i,j,k} * (req_input_{i,k,kin} - y_input_{i,j,k,kin}) \leq 0$$

12 Cellular constraints (for all j cells):

13 Land constraints (for initially available cropland and pasture):

$$14 \quad \sum_k x_{i,j,k} * (req_land_{i,k,m} - y_land_{i,j,m}) \leq land_const_{i,j,m}$$

15 Land conversion constraint (for non-agricultural land to be potentially
16 converted into cropland and pasture):

$$17 \quad \sum_k x_{i,j,k} * y_land_{i,j,m} \leq land_const_{i,j,"non-agri"}$$

18 Rotational constraints (for all n constraint types):

$$19 \quad \sum_k x_{i,j,k} * req_share_{i,k,n} \leq max_share_{i,n} * land_const_{i,j,"cropland"}$$

1 Water constraints:

2
$$\sum_k x_{i,j,k} * (req_wat_{i,k} - y_wat_{i,j}) / (1 + (yld_tc_i * wat_tc)) \leq wat_const_{i,j}$$

3 The model is written in GAMS (Brooke et al. 2003) and solved with CONOPT (Drud 1996).

1 **9. Acknowledgements**

2 We gratefully acknowledge financial support by the EU Integrated Project MATISSE, the
3 Project "Biosphere and Society under Global Change" as part of the German Leibniz
4 Association's "Pakt für Forschung", the German BMBF Project "Preis des Wassers", the
5 International Max Planck Research School on Earth System Modelling, and the Project
6 "Climate Change and Justice", funded by Misereor and the Munich Re Foundation. We wish
7 to thank Carlo C. Jaeger, Marina Fischer-Kowalski, Wolfgang Cramer, Ottmar Edenhofer,
8 Marian Leimbach, Faye Duchin, and two anonymous reviewers for insightful discussions and
9 valuable comments on earlier drafts.

1 **10. References**

- 2 Bondeau, A., Smith, P., Zaehle, S., Schaphoff, S., Lucht, W., Cramer, W., Gerten, D., Lotze-
3 Campen, H., Müller, C., Reichstein, M. and Smith, B., 2007. Modelling the role of agriculture
4 for the 20th century global terrestrial carbon balance. *Global Change Biology*, 13(3): 679-706.
- 5 Brooke, A., Kendrick, D., Meeraus, A., Raman, R., 2003. *GAMS - A User's Guide*. GAMS
6 Development Corporation, Washington D.C.
- 7 CIESIN, IFPRI and WRI, 2000. *Gridded Population of the World (GPW), Version 2*. Center
8 for International Earth Science Information Network (CIESIN) Columbia University,
9 International Food Policy Research Institute (IFPRI) and World Resources Institute (WRI),
10 Palisades, NY.
- 11 Darwin, R., 1999. A farmer's view of the Ricardian approach to measuring agricultural effects
12 of climatic change. *Climatic Change*, 41(3-4): 371-411.
- 13 Döll, P. and Siebert, S., 2000. A digital global map of irrigated areas. *ICID Journal*, 49(2): 55-
14 66.
- 15 Drud, A.S., 1996. *CONOPT: A System for Large Scale Nonlinear Optimization*, Reference
16 Manual for CONOPT Subroutine Library, 69p, ARKI Consulting and Development A/S,
17 Bagsvaerd, Denmark.
- 18 FAOSTAT, 2004. *Food Balance Sheets*. Rome, FAO.
- 19 FAOSTAT, 2005. <http://faostat.fao.org/> [Accessed: March, 2005].
- 20 Gerten, D., Schaphoff, S., Haberlandt, U., Lucht, W. and Sitch, S., 2004. Terrestrial
21 vegetation and water balance - hydrological evaluation of a dynamic global vegetation model.
22 *Journal of Hydrology*, 286(1-4): 249-270.

- 1 Harris, J.M. and Kennedy, S., 1999. Carrying capacity in agriculture: global and regional
2 issues. *Ecological Economics*, 29(3): 443-461.
- 3 Heistermann, M., Müller, C., Ronneberger, K., 2006. Land in sight? Achievements, deficits
4 and potentials of continental to global scale land-use modeling. *Agriculture, Ecosystems &*
5 *Environment*, 114: 141-158. 10.1016/j.agee.2005.11.015
- 6 Hertel, T.W. (Ed.), 1997. *Global trade analysis*. Cambridge, Cambridge University Press.
- 7 IMAGE team, 2001. The IMAGE 2.2 implementation of the SRES scenarios: A
8 comprehensive analysis of emissions, climate change and impacts in the 21st century.
9 National Institute for Public Health and the Environment, RIVM CD-ROM publication
10 481508018, Bilthoven, The Netherlands.
- 11 IPCC, 2000. *Special Report on Emissions Scenarios*. IPCC.
- 12 IPCC, 2007. *Climate Change 2007: The Scientific Basis*. Contribution of Working Group I to
13 the Fourth Assessment Report of the Intergovernmental Panel on Climate Change. Cambridge
14 University Press, Cambridge, UK and New York, NY, USA.
- 15 Keyzer, M.A., Merbis, M.D. and Pavel, I.F.P.W., 2001. *Can we feed the animals? Origins and*
16 *Implications of rising meat demand*. Centre for World Food Studies, Amsterdam.
- 17 Klijn, J.A., Vullings, L.A.E., van den Berg, M., van Meijl, H., van Lammeren, R., van
18 Rheenen, T., Veldkamp, A., Verburg, P.H., Westhoek, H. and Eickhout, B., 2005. The
19 EURURALIS study: Technical document. Alterra, Wageningen.
- 20 Kuhn, A., 2003. *From World Market to Trade Flow Modelling - The Re-Designed WATSIM*
21 *Model*. Institute of Agricultural Policy, Market Research and Economic Sociology, Bonn.
- 22 Lee, H.L., Hertel, T., Sohngen, B., Ramankutty, N., 2005. *Towards An Integrated Land Use*
23 *Database for Assessing the Potential for Greenhouse Gas Mitigation*, GTAP Technical Paper
24 No. 25, West Lafayette, Indiana, USA.

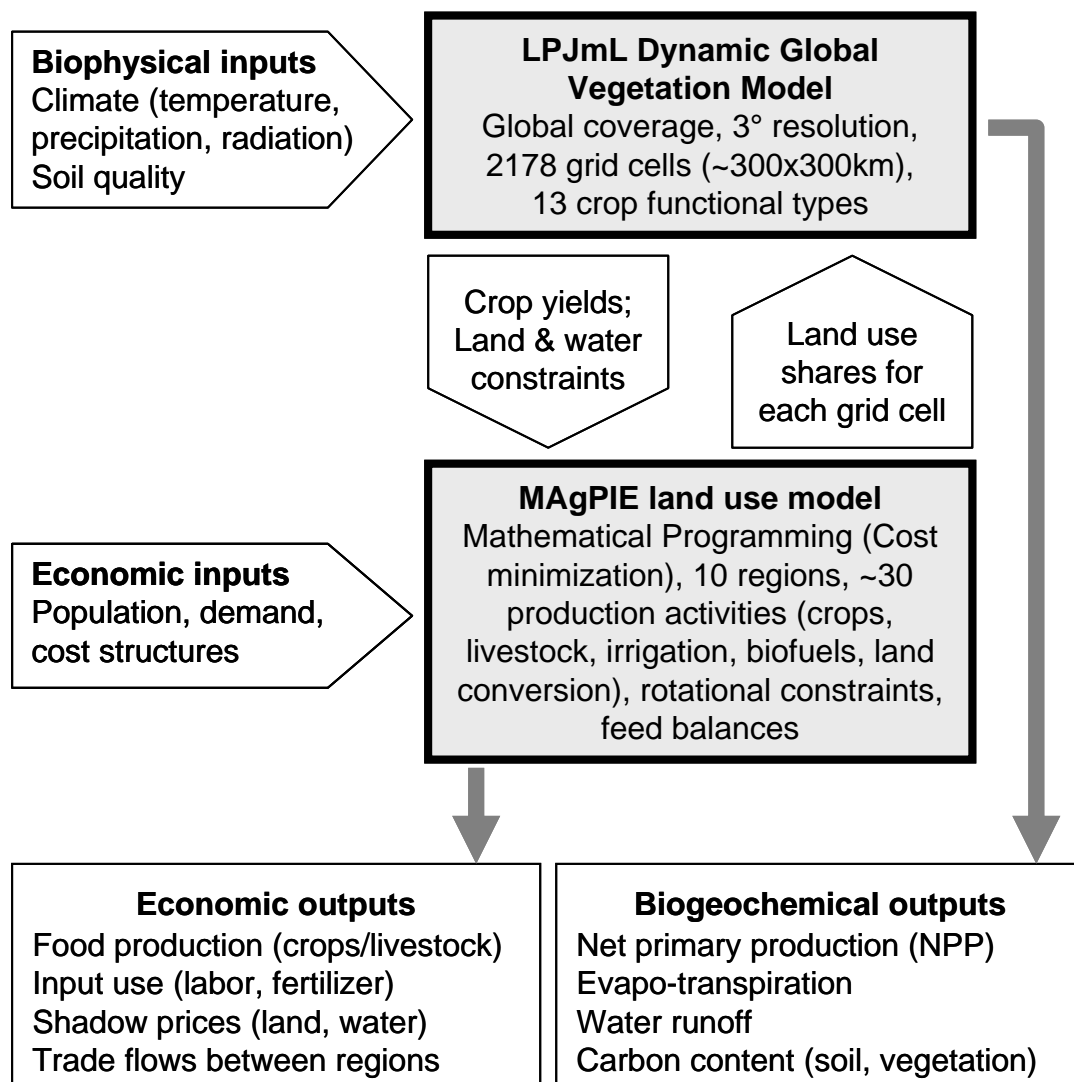
- 1 Lutz, W., Sanderson, W. and Scherbov, S., 2001. The end of world population growth.
2 Nature, 412(6846): 543-545.
- 3 McDougall, R.A., Elbehri, A. , Truong, T.P., 1998. Global Trade Assistance and Protection:
4 The GTAP 4 Data Base. Center for Global Trade Analysis, Purdue University.
- 5 McNeill, J. and Winiwarter, V., 2004. Breaking the Sod: Humankind, History, and Soil.
6 Science, 304(5677): 1627-1629.
- 7 Müller, C., Bondeau, A., Lotze-Campen, H., Lucht, W. and Cramer, W., 2006. Comparative
8 Impact of Climatic and Non-climatic Factors on the Carbon and Water Cycles of the
9 Terrestrial Biosphere. Global Biogeochemical Cycles, 20(4): GB4015.
- 10 Müller, C. and Lucht, W., 2007. Robustness of terrestrial carbon and water cycle simulations
11 against variations in spatial resolution. Journal of Geophysical Research - Atmospheres, 112:
12 D06105.
- 13 Oldeman, L.R., Hakkeling, R.T.A. and Sombroek, W.G., 1990. World map of the status of
14 human induced soil degradation. An explanatory note. International Soil Reference and
15 Information Centre, Wageningen, NL.
- 16 Qaim, M. and Zilberman, D., 2003. Yield effects of genetically modified crops in developing
17 countries. Science, 299: 900-902.
- 18 Ramankutty, N. and Foley, J., 1999. Estimating historical changes in global land cover:
19 Croplands from 1700 to 1992. Global Biogeochemical Cycles, 13(4): 997-1027.
- 20 Rijsberman, F.R., Molden, D., 2001. Balancing water uses: water for food and water for
21 nature. Thematic background paper to the International Conference on Freshwater., Bonn,
22 International Conference on Freshwater, 3-7 December.
- 23 Rosegrant, M.W. and Cai, X., 2003. Global water demand and supply projections. Part 2:
24 results and prospects to 2025. Water International, 27(2): 170-182.

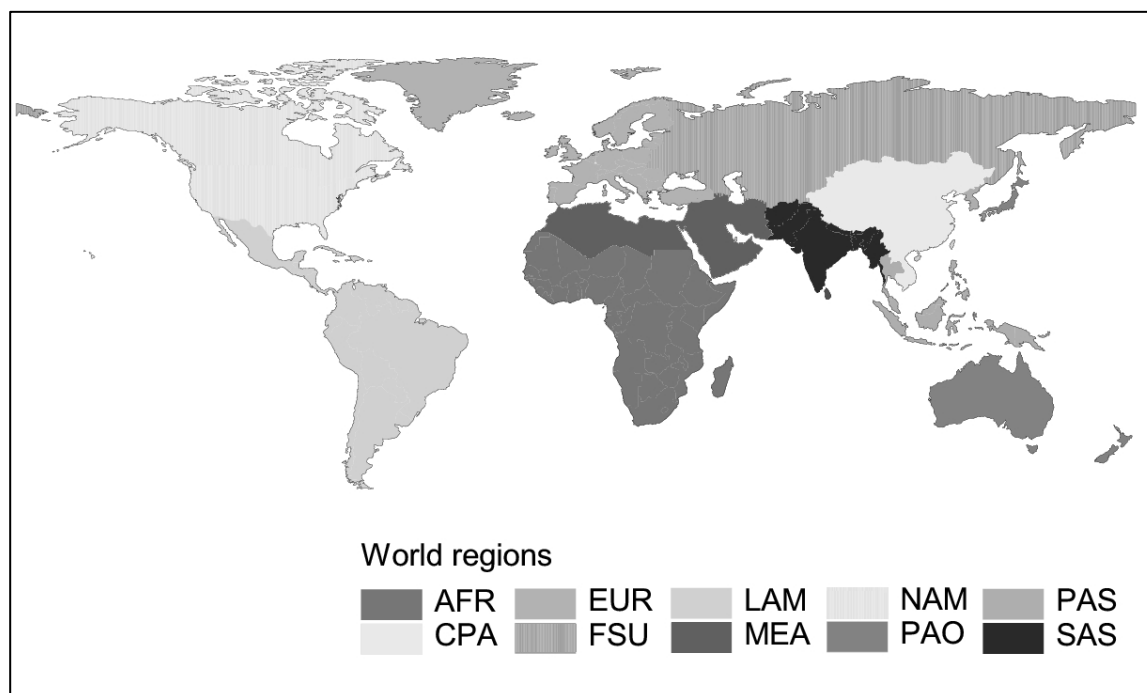
- 1 Rosegrant, M.W., Cai, X. and Cline, S.A., 2002. World Water and Food to 2025: Dealing
2 with Scarcity. International Food Policy Research Institute, Washington D.C.
- 3 Rosegrant, M.W., Ringler, C. and Gerpacio, R.V., 1997. Water and land resources and global
4 food supply. In: Peter, G.H. and Von Braun, J. (Eds.), Food security, diversification and
5 resource management: refocusing the role of agriculture? Aldershot, Ashgate. pp. 167-185.
- 6 Rounsevell, M.D.A., Annetts, J.E., Audsley, E., Mayr, T. and Reginster, I., 2003. Modelling
7 the spatial distribution of agricultural land use at the regional scale. *Agriculture, Ecosystems
8 & Environment*, 95(2-3): 465-479.
- 9 Sands, R.D. and Leimbach, M., 2003. Modeling agriculture and land use in an integrated
10 assessment framework. *Climatic Change*, 56(1): 185-210.
- 11 Sitch, S., Smith, B., Prentice, I., Arneth, A., Bondeau, A., Cramer, W., Kaplan, J., Levis, S.,
12 Lucht, W., Sykes, M., Thonicke, K. and Venevsky, S., 2003. Evaluation of ecosystem
13 dynamics, plant geography and terrestrial carbon cycling in the LPJ dynamic global
14 vegetation model. *Global Change Biology*, 9(2): 161-185.
- 15 Stephenne, N. and Lambin, E.F., 2001. A dynamic simulation model of land-use changes in
16 Sudano-sahelian countries of Africa (SALU). *Agriculture, Ecosystems & Environment*, 85(1-
17 3): 145-161.
- 18 Tan, G.X., Shibasaki, R., Matsumura, K. and Rajan, K.S., 2003. Global research for
19 integrated agricultural land use change modeling. Asia GIS Conference 2003 Publications,
20 Wuhan, China.
- 21 van Meijl, H., van Rheenen, T., Tabeau, A. and Eickhout, B., 2006. The impact of different
22 policy environments on land use in Europe. *Agriculture Ecosystems & Environment*, 114(1):
23 21-38.

- 1 Verburg, P.H., de Koning, G.H.J., Kok, K., Veldkamp, A. and Bouma, J., 1999. A spatial
- 2 explicit allocation procedure for modelling the pattern of land use change based upon actual
- 3 land use. *Ecological Modelling*, 116(1): 45-61.
- 4 World Bank, 2001. *World Development Indicators (CD-ROM)*. Washington D.C.

11. Figure captions

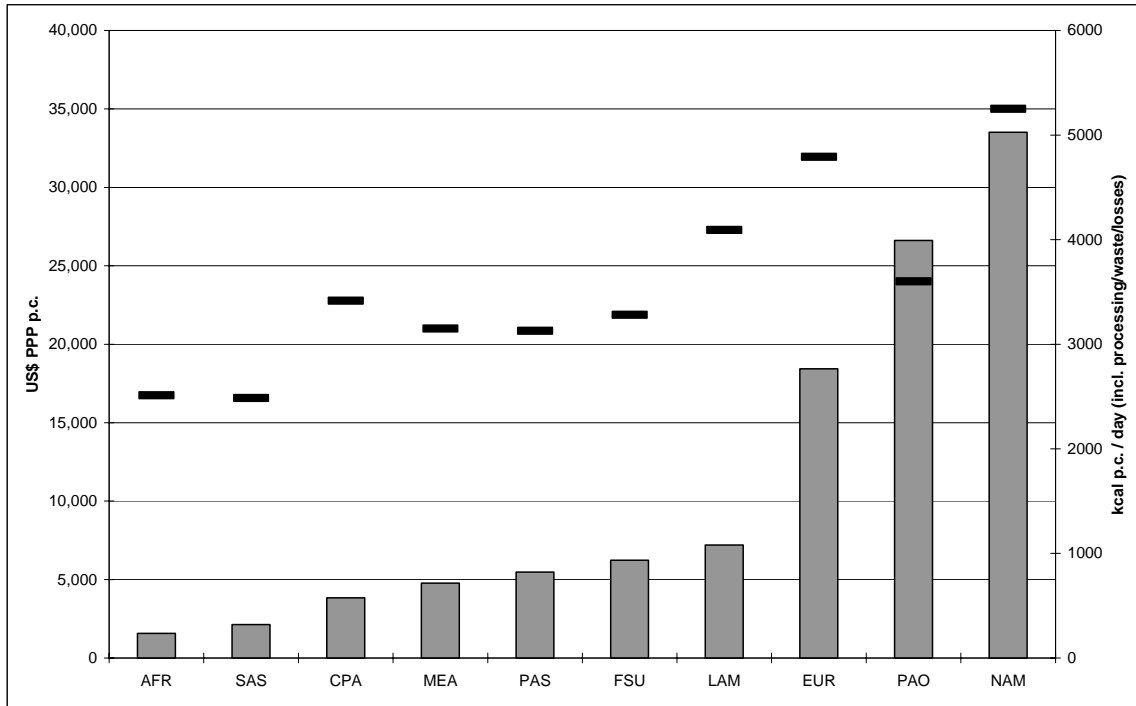
- 1
- 2
- 3 Figure 1: Information flow within the coupled modeling system
- 4 Figure 2: Model regions
- 5 Figure 3: Structure of model regions: Gross Domestic Product per capita (red column) and
6 calorie demand (blue dash) in 1995
- 7 Figure 4: Regression of calorie intake against income (Gross Domestic Product per capita)
8 based on data for 105 countries (in 1990 and 2000) ($R^2 = 0.66$)
- 9 Figure 5: Observed (a) and simulated (b) cropland shares in total area (percent) for 1970
- 10 Figure 6: Cropland shares in total area (percent) in individual grid cells for each model region
11 in 1970 (Simulation results against data from Ramankutty and Foley (1999))
- 12 Figure 7: Individual crop shares in total cropland for all model regions in 1970 (Simulation
13 results against data from FAOSTAT (2005))
- 14 Figure 8a: Annual technological change rates between 1970 and 1995 for all model regions
15 (Simulation results against data from FAOSTAT (2005))
- 16 Figure 8b: Changes in total cropland area between 1970 and 1995 for all model regions
17 (Simulation results against data from FAOSTAT (2005))
- 18 Figure 9: Shadow price for irrigation water (US\$/m³) in 1995 (Simulation results)
- 19 Figure 10: Required annual yield increases (percent) over the period 1995-2055, baseline
20 scenario plus scenarios with low water-saving rate and cropland expansion (see text for
21 explanation). As a matter of orientation, the dashed line is set at 1.4 which is the rate of
22 change equivalent to a doubling of yield in 50 years time.

1 **Figure 1**2
3
4
5

1 **Figure 2**2
3

| Acro- nym | Name | Population (mio in 1995) | Cropland share in total area | Number of 3-degree grid cells | Share of grid cells with cropland |
|--------------|---|--------------------------------|------------------------------------|-------------------------------------|--|
| AFR | Sub-Saharan Africa | 553 | 8% | 262 | 74% |
| CPA | Centrally Planned Asia (incl. China) | 1281 | 17% | 143 | 85% |
| EUR | Europe (incl. Turkey) | 554 | 26% | 175 | 71% |
| FSU | Former Soviet Union | 276 | 15% | 462 | 59% |
| LAM | Latin America | 452 | 9% | 266 | 87% |
| MEA | Middle East/ North Africa | 278 | 4% | 130 | 39% |
| NAM | North America | 292 | 14% | 428 | 37% |
| PAO | Pacific OECD (Japan, AUS, NZL) | 134 | 5% | 136 | 49% |
| PAS | Pacific Asia | 383 | 16% | 104 | 67% |
| SAS | Southern Asia (incl. India) | 1270 | 37% | 72 | 94% |

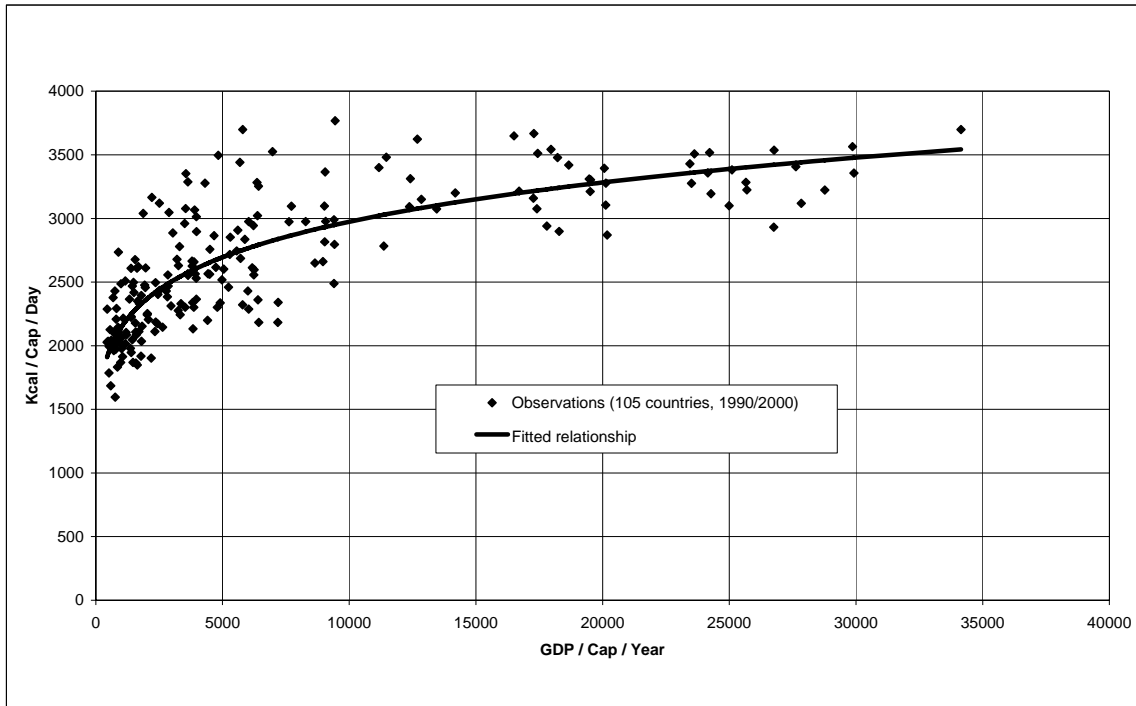
1 **Figure 3**



2
3

1 **Figure 4**

2

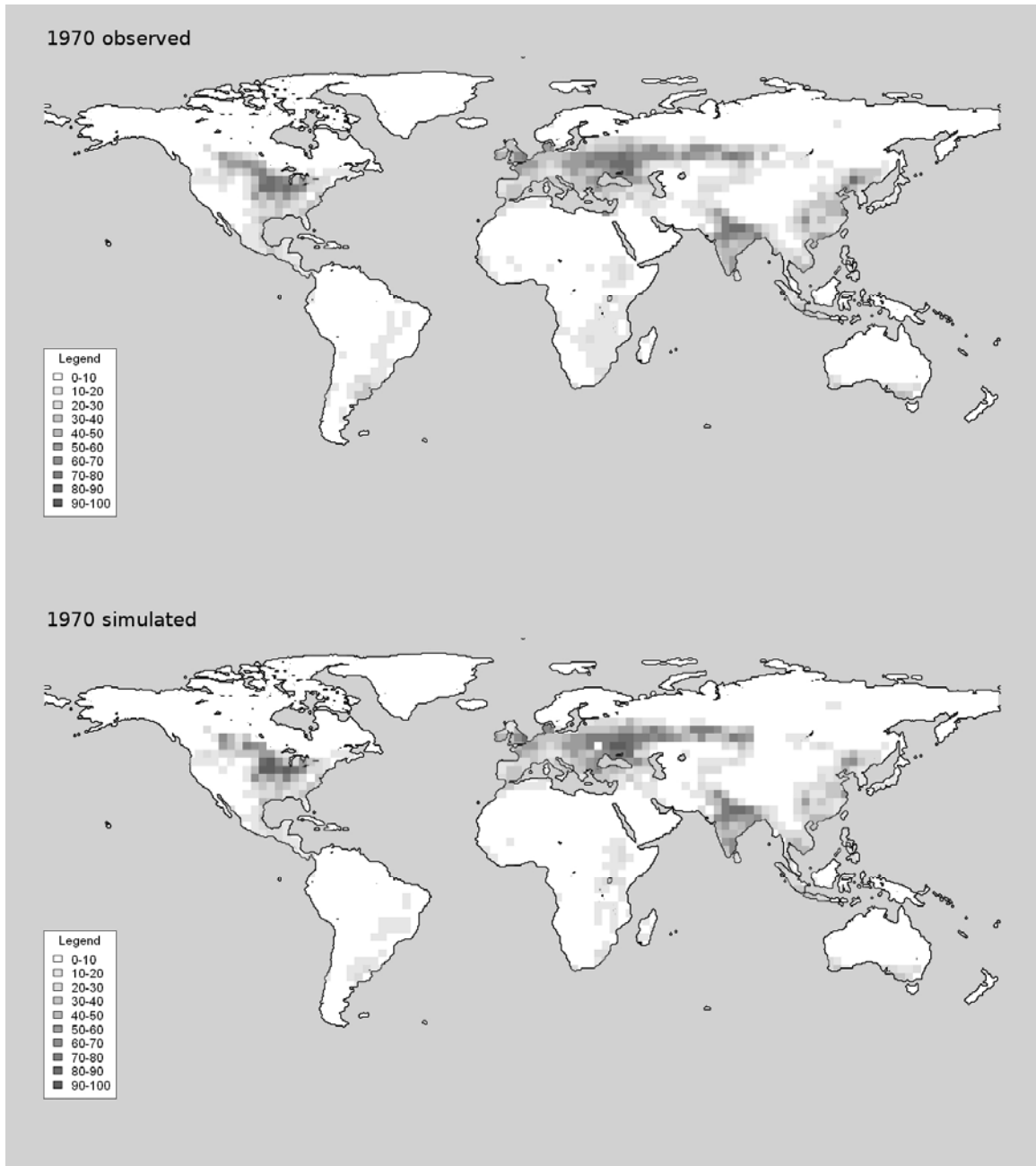


3

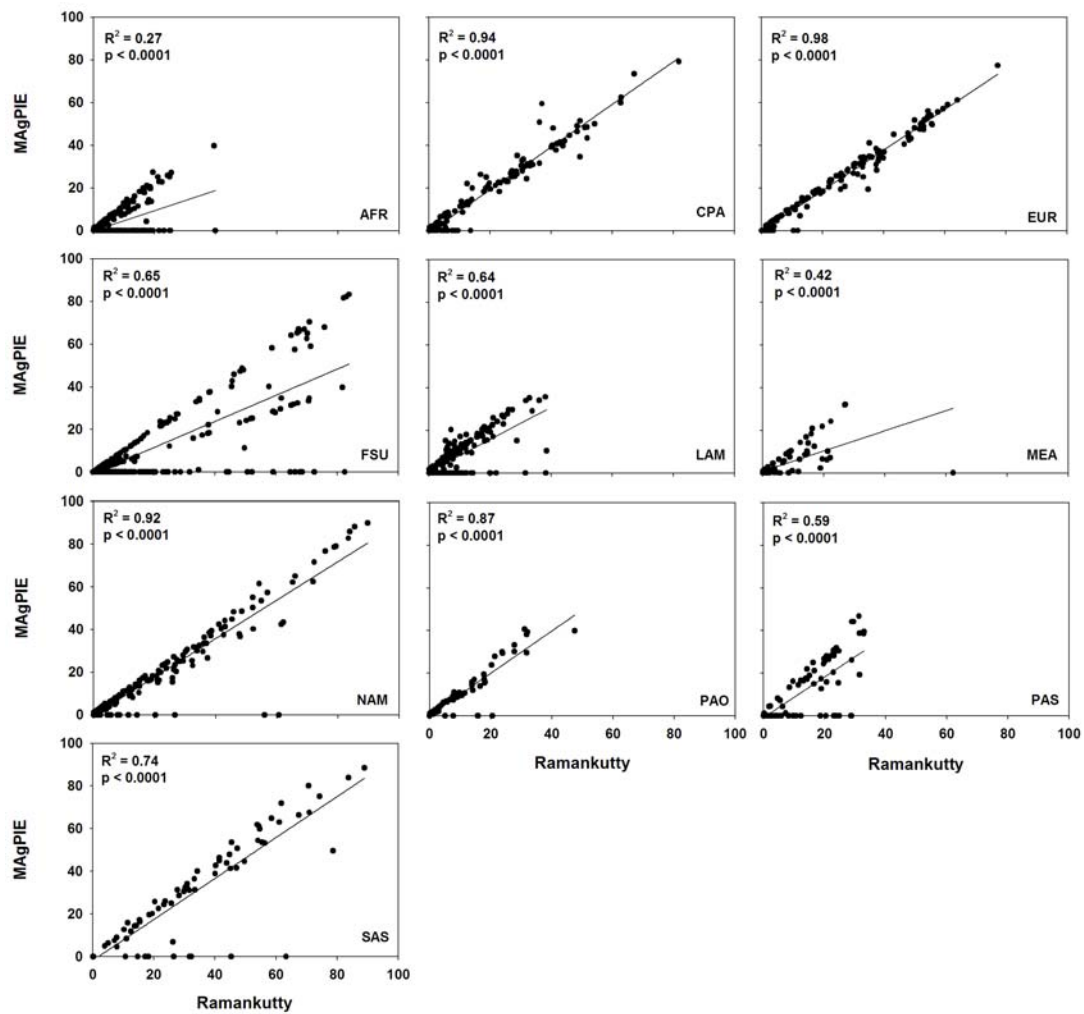
4

1 **Figure 5**

2

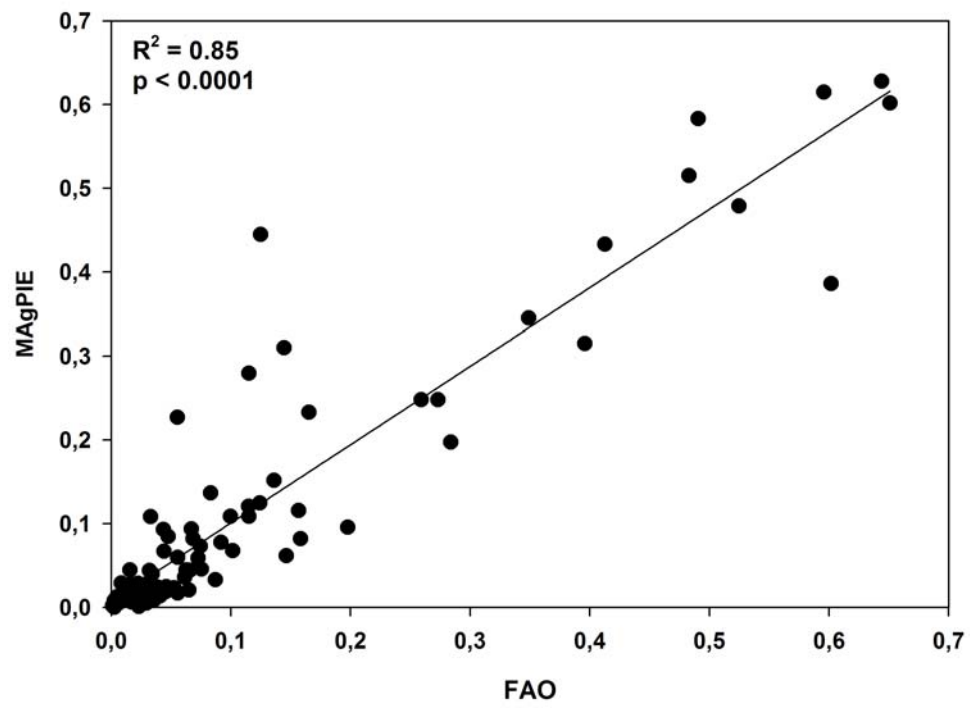


1 **Figure 6**
2

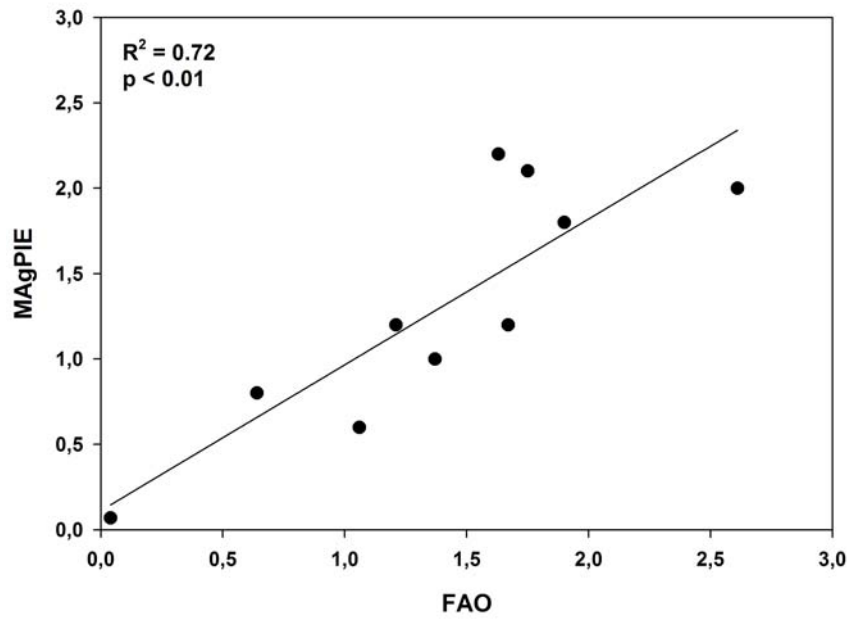
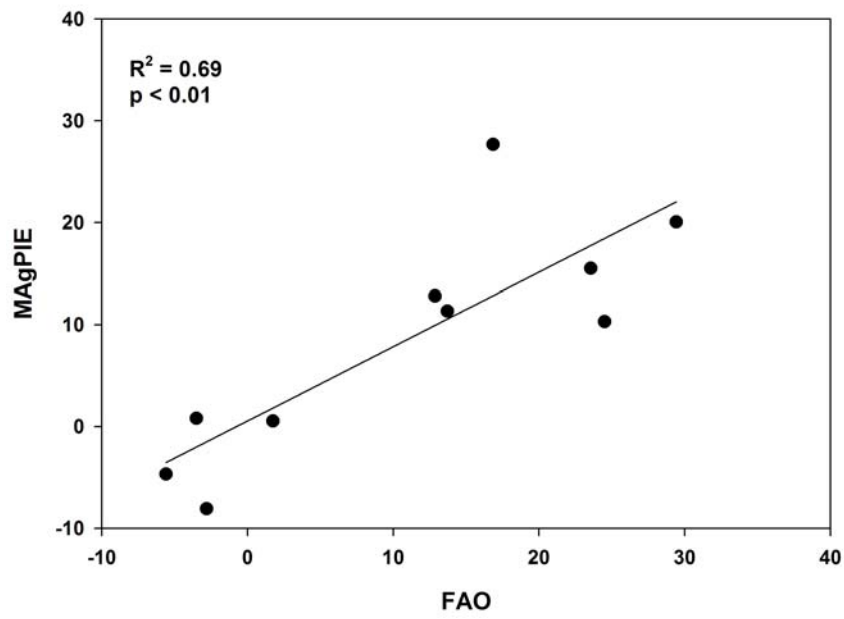


3
4

1 **Figure 7**
2
3



4

1 **Figure 8a**2
3
4
5**Figure 8b**

6

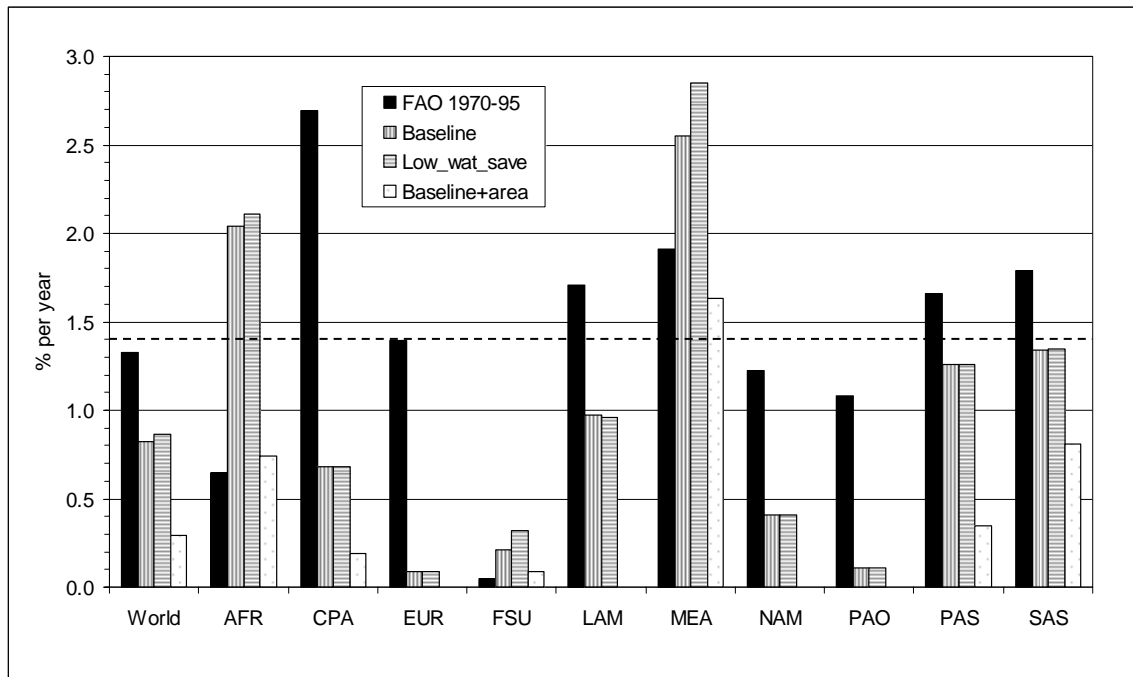
1 **Figure 9**

2



3

1 **Figure 10**
2



3
4
5
6
7
8
9