

# Journal Pre-proof

Temperature-related excess mortality in German cities at 2°C and higher degrees of global warming

Veronika Huber, Linda Krummenauer, Cristina Peña-Ortiz, Stefan Lange, Antonio Gasparrini, Ana M. Vicedo-Cabrera, Ricardo Garcia-Herrera, Katja Frieler

PII: S0013-9351(20)30340-6

DOI: <https://doi.org/10.1016/j.envres.2020.109447>

Reference: YENRS 109447

To appear in: *Environmental Research*

Received Date: 26 November 2019

Revised Date: 13 March 2020

Accepted Date: 25 March 2020

Please cite this article as: Huber, V., Krummenauer, L., Peña-Ortiz, C., Lange, S., Gasparrini, A., Vicedo-Cabrera, A.M., Garcia-Herrera, R., Frieler, K., Temperature-related excess mortality in German cities at 2°C and higher degrees of global warming *Environmental Research* (2020), doi: <https://doi.org/10.1016/j.envres.2020.109447>.

This is a PDF file of an article that has undergone enhancements after acceptance, such as the addition of a cover page and metadata, and formatting for readability, but it is not yet the definitive version of record. This version will undergo additional copyediting, typesetting and review before it is published in its final form, but we are providing this version to give early visibility of the article. Please note that, during the production process, errors may be discovered which could affect the content, and all legal disclaimers that apply to the journal pertain.

© 2020 Published by Elsevier Inc.



**CRedit author contribution statement**

VH: Conceptualization, Methodology, Software, Formal analysis, Writing - Original Draft; LK: Investigation, Software, Writing - Review & Editing; CPO: Conceptualization, Methodology, Resources, Writing - Review & Editing; SL: Methodology, Data Curation, Writing - Review & Editing; AG: Methodology, Software, Writing - Review & Editing; AVC: Methodology, Software, Writing - Review & Editing; RG-H: Supervision, Writing - Review & Editing; KF: Funding acquisition, Writing - Review & Editing

Journal Pre-proof

1 Temperature-related excess mortality in German cities at 2°C and  
2 higher degrees of global warming

3

4 Veronika Huber<sup>a\*</sup>, Linda Krumpalauer<sup>b,c</sup>, Cristina Peña-Ortiz<sup>a</sup>, Stefan Lange<sup>b</sup>, Antonio  
5 Gasparrini<sup>d,e</sup>, Ana M. Vicedo-Cabrera<sup>e</sup>, Ricardo Garcia-Herrera<sup>f,g</sup>, Katja Frieler<sup>b</sup>

6

7 <sup>a</sup> Department of Physical, Chemical, and Natural Systems, Universidad Pablo de Olavide,  
8 Sevilla, Spain

9 <sup>b</sup> Potsdam Institute for Climate Impact Research (PIK), Potsdam, Germany

10 <sup>c</sup> Institute of Environmental Science and Geography, University of Potsdam, Germany

11 <sup>d</sup> Department of Public Health, Environments, and Society, London School of Hygiene and  
12 Tropical Medicine, London, UK

13 <sup>e</sup> Centre for Statistical Methodology, London School of Hygiene and Tropical Medicine,  
14 London, UK.

15 <sup>f</sup> Department of Earth Physics and Astrophysics, Universidad Complutense de Madrid, Spain

16 <sup>g</sup> Instituto de Geociencias, IGEO (CSIC-UCM), Madrid, Spain

17

18 \*corresponding author at: Department of Physical, Chemical, and Natural Systems,  
19 Universidad Pablo de Olavide, Ctra. de Utrera, km. 1, 41013, Sevilla, Spain; e-mail:  
20 vehub@upo.es

21 **Abstract**

22 *Background:* Investigating future changes in temperature-related mortality as a function of  
23 global mean temperature (GMT) increases allows for the evaluation of policy-relevant  
24 climate change targets. So far, only few studies have taken this approach, and, in particular,  
25 no such assessments exist for Germany, the most populated country of Europe.

26 *Methods:* We assess temperature-related mortality in 12 major German cities based on daily  
27 time-series of all-cause mortality and daily mean temperatures in the period 1993-2015,  
28 using distributed-lag non-linear models in a two-stage design. Resulting risk functions are  
29 applied to estimate excess mortality in terms of GMT increases relative to pre-industrial  
30 levels, assuming no change in demographics or population vulnerability.

31 *Results:* In the observational period, cold contributes stronger to temperature-related  
32 mortality than heat, with overall attributable fractions of 5.49% (95%CI: 3.82 – 7.19) and  
33 0.81% (95%CI: 0.72 – 0.89), respectively. Future projections indicate that this pattern could  
34 be reversed under progressing global warming, with heat-related mortality starting to  
35 exceed cold-related mortality at 3°C or higher GMT increase. Across cities, projected net  
36 increases in total temperature-related mortality were 0.45% (95%CI: -0.02 – 1.06) at 3°C,  
37 1.53% (95%CI: 0.96 – 2.06) at 4°C, and 2.88% (95%CI: 1.60 – 4.10) at 5°C, compared to  
38 today's warming level of 1°C. By contrast, no significant difference was found between  
39 projected total temperature-related mortality at 2°C versus 1°C of GMT increase.

40 *Conclusions:* Our results can inform current adaptation policies aimed at buffering the health  
41 risks from increased heat exposure under climate change. They also allow for the evaluation  
42 of global mitigation efforts in terms of local health benefits in some of Germany's most  
43 populated cities.

44

45 **Keywords:** temperature-related mortality, climate change, future projections, Germany,  
46 global mean temperature

47

**48 Introduction**

49 Climate change is expected to alter the currently observed pattern of temperature-related  
50 excess mortality around the globe. Quantitative assessments of temperature-related  
51 mortality under climate change scenarios have often focused on heat, concluding that heat-  
52 related excess mortality is likely to increase under global warming (Huang et al., 2011; Li et  
53 al., 2018; Sanderson et al., 2017; Wang et al., 2019). The fewer studies that investigated the  
54 entire temperature range generally estimated concomitant decreases in cold-related  
55 mortality (Martin et al., 2012; Li et al., 2013; Schwartz et al., 2015; Gasparrini et al., 2017;  
56 Weinberger et al., 2017; Sanchez Martinez et al., 2018; Vicedo-Cabrera et al., 2018), albeit  
57 some of these results have been controversially discussed (Arbuthnott et al., 2018; Kinney et  
58 al., 2015).

59  
60 The majority of projection studies has presented changes in excess mortality for different  
61 emission scenarios and future time periods. Yet, given that the international climate change  
62 policy targets, as, e.g., implemented in the Paris Agreement, are expressed as temperature  
63 limits, there is a growing need to present mortality projections as a function of global mean  
64 temperature (GMT) rise (Ebi et al., 2018). In addition, the focus on temperature magnitudes  
65 rather than on time periods facilitates the construction of damage functions to integrate  
66 health impacts in integrated assessment models (Carleton et al., 2018), and allows for the  
67 derivation of impact emulators required to quickly judge emission pledges in terms of  
68 climate impacts (Ostberg et al., 2018). So far, there are few projection studies of  
69 temperature-related mortality focusing on the magnitudes of GMT change (Chen et al.,  
70 2019; Vicedo-Cabrera et al., 2018; Wang et al., 2019; Mitchell et al., 2018; Lo et al., 2019).  
71 Most of these studies focus on the lower levels of possible GMT increase within this century  
72 (1.5°C, 2°C, and 3°C above pre-industrial levels), while we also take the higher global  
73 warming levels (4°C and 5°C above pre-industrial levels) into account.

74  
75 Furthermore, we are the first to present projections of temperature-related mortality based  
76 on a newly assembled observational dataset of death counts and climate variables in 12  
77 large cities of Germany, the most populated country of Europe. Although temperature-  
78 related excess mortality in Germany has been studied based on observational data for  
79 specific cities (Breitner et al., 2014), regions (Laschewski and Jendritzky, 2002; Muthers et

80 al., 2017), and the entire country (Karlsson and Ziebarth, 2018), there is only a very limited  
81 number of quantitative climate change projection studies. The few existing ones are limited  
82 to specific cities or regions of Germany (Chen et al., 2019; Rai et al., 2019), neglect the  
83 effects of cold (Zacharias et al., 2015; Kendrovski et al., 2017), or use only one simplified  
84 model for the relationship between temperature and mortality for the entire country  
85 (Hübler et al., 2008).

86

87 The main objective of this study is to evaluate the policy-relevant climate change target of  
88 limiting global warming to below 2°C compared to higher warming levels in terms of changes  
89 in temperature-related mortality in Germany, focussing on the potential for local benefits  
90 versus damages of climate change. To this aim, we derive temperature-mortality  
91 associations in 12 large German cities, using state-of-the art statistical techniques developed  
92 in time-series modelling (Gasparrini et al., 2012, 2010). Based on these associations and an  
93 ensemble of locally bias-corrected climate projections (Frieler et al., 2017), we estimate  
94 temperature-related excess mortality at different degrees of global warming (1°C, 2°C, 3°C,  
95 4°C, and 5°C of GMT rise above pre-industrial levels). Since we make the counterfactual  
96 assumption of no future changes in adaptation and demography, our estimates are best  
97 interpreted as exposing the current population of Germany's major cities, embedded in  
98 current infrastructures and health care systems, to different possible temperature  
99 distributions of the future.

100

## 101 **Material and methods**

### 102 *Observational data*

103 We obtained daily death counts of all-cause mortality in 12 major German cities (> 500 000  
104 inhabitants; see Table A1 for city coding and population data) from the Research Data  
105 Centres of the Federation and the Federal States of Germany for the period 1 January 1993  
106 to 31 December 2015 (individual datasets are available as doi:  
107 10.21242/23211.[year].00.00.1.1.0). The cities are spread across the entire country (Fig. A1),  
108 and represent around 16% of the total German population in 2015 (Table A1). Given the  
109 susceptibility of a wide range of death causes to non-optimal temperatures (e.g., Anderson  
110 and Bell, 2009; Gasparrini et al., 2012b), it is a common approach in studies of temperature-  
111 related mortality to work with total death counts. More specifically, it has been shown that

112 results on temperature-mortality associations are practically insensitive to the use of all-  
113 cause versus non-accidental mortality data across a large number of locations (Gasparrini et  
114 al., 2015).

115  
116 Data of daily mean temperature (24-h averages) for the study period was derived from the  
117 Climate Data Centre of the German National Meteorological Service (Deutscher  
118 Wetterdienst). If several weather stations existed within the city boundaries, stations closest  
119 to the city centre were chosen, provided that measurements were available for the whole  
120 study period. (Table A2). We decided to use temperature data from a single weather station,  
121 given that more spatially refined exposure data does not generally yield different estimates  
122 of temperature-mortality associations compared to simpler one-station data (Schaeffer et  
123 al., 2016; Weinberger et al., 2019). Details on the processing of missing values are given in  
124 Appendix A.

125

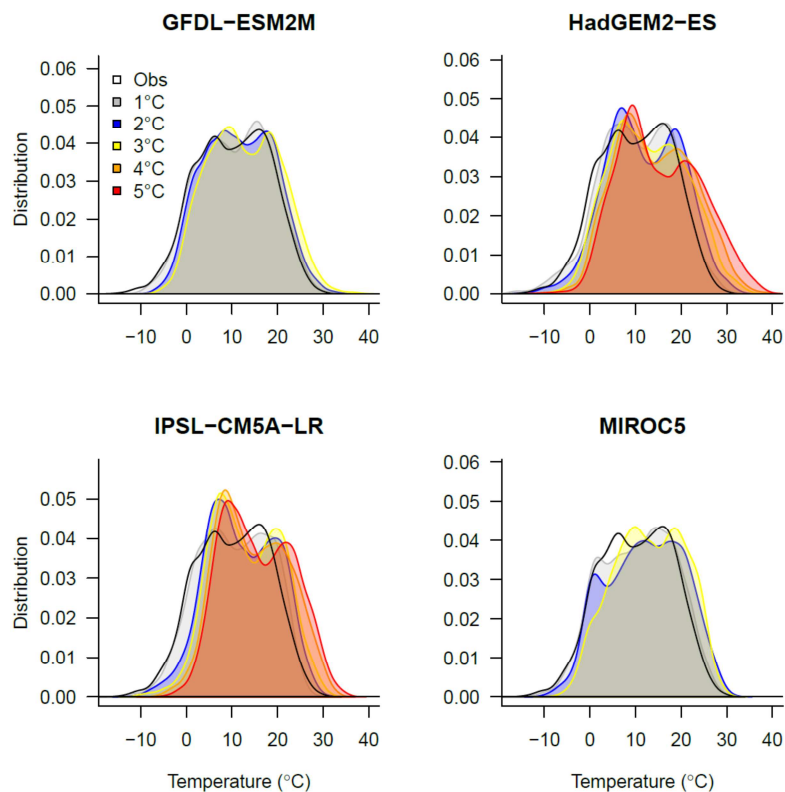
#### 126 *Temperature projections*

127 Projections of daily mean temperatures for the 12 cities were derived from the second phase  
128 of the Inter-Sectoral Impact Model Intercomparison Project (ISIMIP2b) (Frieler et al., 2017),  
129 comprising gridded ( $0.5^\circ \times 0.5^\circ$ ), bias-corrected data from 4 general circulation models  
130 (GCMs) (GFDL-ESM2M, HadGEM2-ES, IPSL-CM5A-LR, MIROC5), which contributed  
131 simulations to the 5<sup>th</sup> Coupled Model Intercomparison Project (CMIP5). For each GCM, we  
132 considered the historical run in the period 1986-2005 and 4 different climate-change  
133 scenario runs (Representative Concentration Pathways (RCPs): RCP2.6, RCP4.5, RCP 6.0,  
134 RCP8.5) in the period 2006-2099 (2006-2100 for RCP8.5 simulations from IPSL-CM5A-LR).  
135 Time-series from the grid cell enclosing the respective city coordinates were extracted, and  
136 the data was additionally bias-corrected using the local weather station data from each city  
137 following the approach by Lange (2017). Through this additional bias-correction step we  
138 mapped the spatial temperature mean of the grid cell to the local scale of the city. The  
139 remaining bias in the distribution of daily mean temperatures was relatively small (Fig. A2).  
140 In addition to local projection data, we also considered annual averages of corresponding  
141 GMT series.

142

#### 143 *Defining global warming levels*

144 To select time slices corresponding to the considered levels of global warming, we first  
 145 computed a series of annual GMT differences against pre-industrial levels for each GCM and  
 146 RCP (extended backwards in time using data from the historical run). In this step, given that  
 147 some of the GCMs considered (especially HadGEM2-ES and IPSL-CM5A-LR) simulate  
 148 historical global warming trends that deviate substantially from the observed trend, we  
 149 chose 1986-2005 as a reference period and added the observed global warming of 0.6°C  
 150 between this reference period and pre-industrial levels (following Schleussner et al., 2016).  
 151 Subsequently, we computed 21-year running means of GMT increases above pre-industrial  
 152 levels and determined the corresponding temporal windows when the considered levels of  
 153 global warming (1°C to 5°C) were reached for the first time (see Table A3 for selected time  
 154 windows). Finally, we extracted the local temperature projections in these temporal  
 155 windows (for an example of the resulting temperature distributions for Berlin, based on  
 156 RCP8.5, see Fig. 1). It can be noted that only HadGEM2-ES and IPSL-CM5A-LR reached 4°C  
 157 and 5°C above pre-industrial levels in the scenarios considered (Fig. 1, Table A3). We  
 158 computed changes in projected excess mortality against mortality simulated for the lowest  
 159 warming level 1°C, which roughly corresponds to the historical warming up to present-day.



160  
 161 **Figure 1.** Example distributions of observed (black) and projected (colours) mean daily temperatures  
 162 at different levels of global warming in Berlin, by global climate model. Distributions were  
 163 constructed based on daily simulation data (1986-2099, historical run + shown here RCP8.5), mapped



164 to global warming levels by considering 21-year running means of annual differences in global mean  
165 temperature (GMT) above pre-industrial levels (see Table A3).

166

### 167 *Deriving temperature-mortality associations*

168 Temperature-mortality associations were estimated with a two-stage approach, following  
169 Gasparrini et al. (2015). The details of the methodology are extensively documented in  
170 Gasparrini et al. (2010) and Gasparrini et al. (2012a). In the first stage, we used time-series  
171 quasi-Poisson regression to estimate city-specific exposure-response functions.

172 Temperature-mortality associations were modelled with distributed-lag non-linear models  
173 (DLNMs). We fitted a natural cubic spline function with three internal knots placed at the  
174 10<sup>th</sup>, 75<sup>th</sup>, and 90<sup>th</sup> percentiles of the local temperature distribution to model the exposure-  
175 response curve. This choice assures a log-linear extrapolation of the exposure-response  
176 curve beyond the observed temperature range (Vicedo-Cabrera et al., 2019). The lag-  
177 response curve was modelled with a natural cubic spline with an intercept and three internal  
178 knots equally distributed in the log-space, accounting for up to 21 days of lag. We controlled  
179 for day of the week with an indicator, and for seasonal and long-term trends with a natural  
180 cubic spline of time with 7 degrees of freedom per year. The chosen number of degrees of  
181 freedom for control of season and long-term trends corresponded to the minimum quasi-  
182 Akaike information criterion (QAIC) summed across all cities (Fig. A3). Model choices were  
183 further tested in a sensitivity analysis (Table A4).

184

185 In the second stage, we performed a multivariate meta-regression on reduced coefficients  
186 from the first stage, which describe the overall cumulative exposure-response curve across  
187 the 21 days of lag. Long-term average temperature and temperature range (difference  
188 between maximum and minimum temperature) (Table 1) were included as meta-predictors  
189 in the model. Both meta-predictors explained part of the heterogeneity between cities  
190 (Table A5). From the meta-regression model, we derived the best linear unbiased predictors  
191 (BLUPs) for each city, which represent a trade-off between the location-specific association  
192 provided by the first-stage regression and the pooled association, and identify the minimum  
193 mortality temperature (MMT) (Table 1).

194

### 195 *Computation of attributable mortality*

196 All computations of daily mortality attributable to non-optimal temperatures, in the

197 observational period and at different levels of GMT rise (1 to 5°C) followed a similar setup.  
 198 We used the exposure-response curve defined by the BLUPs and centred on the MMTs, and  
 199 combined these with different daily series of temperature and mortality. To derive  
 200 attributable mortality in the observational period (1993-2015), we used the observed  
 201 temperature series and forward moving averages of observed deaths counts across the lag  
 202 period as described in Gasparrini and Leone (2014). To estimate projected attributable  
 203 mortality at different levels of global warming, we built upon the approach by Gasparrini et  
 204 al. (2017) and Vicedo-Cabrera et al. (2018). A series of projected daily mortality was  
 205 constructed by averaging observed deaths counts per day of the year. We then replicated  
 206 the annual pattern 21-times, in order to derive mortality series of the same length as the  
 207 projected temperature series. We summed attributable numbers in the observational period  
 208 (across each series of projected temperatures) to derive total temperature-related excess  
 209 mortality. We also separated components due to heat and cold by considering only days  
 210 with temperatures higher or lower than the MMT. Dividing by the total number of observed  
 211 deaths (the sum of projected mortality series) we also derived the corresponding  
 212 attributable fractions. Overall attributable fractions, for all cities combined, were derived by  
 213 summing daily attributable numbers across all cities, and dividing by the total number of  
 214 deaths. The ensemble mean at each level of GMT rise was calculated as the average across  
 215 all GCM-specific, and RCP-specific attributable fractions. In averaging across RCPs, we  
 216 assumed that it did not matter when in time a specific warming level was reached (see also  
 217 Table A3), i.e., we assumed a scenario-independence of results.

218

219 **Table 1.** Descriptive statistics, estimated minimum mortality temperatures (MMT), and attributable  
 220 fractions in the observational period (1993-2015).

221

City	Total deaths	Mean daily temperature mean (min, max)	MMT °C (perc)	Attributable fractions		
				Total %	Cold %	Heat %
Berlin	811,051	10.2 (-15.6 – 30.5)	18.9 (85 <sup>th</sup> )	6.95 (5.24 – 8.61)	5.95 (4.25 – 7.61)	1.00 (0.89 – 1.13)
Bremen	150,608	9.8 (-14.1 – 27.6)	17.6 (87 <sup>th</sup> )	3.56 (0.23 – 6.81)	3.21 (-0.07 – 6.39)	0.36 (0.16 – 0.55)
Cologne	229,457	10.6 (-16.5 – 29.3)	17.7 (84 <sup>th</sup> )	6.78 (4.84 – 8.79)	5.7 (3.69 – 7.77)	1.08 (0.93 – 1.24)
Dortmund	155,233	10.5 (-15.2 – 28.9)	17.9 (86 <sup>th</sup> )	6.23 (4.21 – 8.23)	5.44 (3.44 – 7.5)	0.79 (0.68 – 0.91)
Dresden	125,866	9.6 (-16.3 – 30.4)	18.7 (86 <sup>th</sup> )	5.42 (2.41 – 8.37)	4.72 (1.68 – 7.7)	0.69 (0.53 – 0.87)

Dusseldorf	160,069	10.9 (-14.6 – 30.0)	17.9 (84 <sup>th</sup> )	6.84 (4.6 – 9.05)	5.76 (3.42 – 8.08)	1.08 (0.9 – 1.27)
Frankfurt	168,417	11.0 (-12.9 – 29.9)	19.8 (87 <sup>th</sup> )	9.59 (5.99 – 12.87)	8.5 (4.97 – 11.73)	1.09 (0.88 – 1.29)
Hamburg	445,338	9.6 (-13.5 – 28.8)	18.5 (90 <sup>th</sup> )	4.93 (1.54 – 8.16)	4.63 (1.37 – 7.75)	0.31 (0.15 – 0.44)
Hannover	279,125	9.9 (-16.9 – 29.0)	17.2 (84 <sup>th</sup> )	4.62 (2.81 – 6.46)	3.83 (1.99 – 5.75)	0.79 (0.64 – 0.95)
Leipzig	152,861	10.0 (-17.5 – 29.0)	17.7 (82 <sup>nd</sup> )	5.09 (3.1 – 7.11)	4.03 (2 – 6.11)	1.07 (0.87 – 1.26)
Munich	290,962	10.0 (-13.4 – 29.5)	19.7 (88 <sup>th</sup> )	7.23 (4.77 – 9.57)	6.62 (4.21 – 8.95)	0.61 (0.47 – 0.74)
Stuttgart	136,878	10.7 (-13.0 – 30.3)	19.2 (86 <sup>th</sup> )	7.98 (5.54 – 10.34)	7.07 (4.57 – 9.5)	0.91 (0.76 – 1.08)
All cities	3,105,865	10.3 (-17.5 – 30.5)	18.4 (86 <sup>th</sup> )*	6.30 (4.6 – 7.98)	5.49 (3.82 – 7.19)	0.81 (0.72 – 0.89)

\* median of city-specific estimates

222

223

#### 224 *Uncertainty estimation*

225 To assess the uncertainty stemming from the fitted exposure-response functions, we  
 226 conducted Monte Carlo simulations drawing 1000 times from a multivariate normal  
 227 distribution defined by the BLUPs and the corresponding co-variance matrix. We determined  
 228 95% empirical confidence intervals (CI) by considering the 2.5<sup>th</sup> and 97.5<sup>th</sup> percentiles of the  
 229 resulting sample. In the projections, we additionally determined the uncertainty stemming  
 230 from the use of different GCMs, and RCPs. Total uncertainty, including epidemiological and  
 231 climate uncertainties, was assessed by considering the 2.5<sup>th</sup> and 97.5<sup>th</sup> percentiles of mean  
 232 excess mortality in each GMT bin across all Monte Carlo samples, GCMs, and RCPs.

233

234 In addition, we were interested in determining the contribution of different sources of  
 235 uncertainty to the overall variability in excess mortality estimates. To assess climate  
 236 uncertainty, due to differences between GCMs and RCPs, we calculated the standard  
 237 deviations of mean excess mortality estimates based on central BLUPs across GCMs ( $SD_{gcm}$ ),  
 238 and across RCPs ( $SD_{rcp}$ ), respectively. As a measure of epidemiological uncertainty, we  
 239 computed the average of standard deviations resulting from Monte Carlo simulations,  
 240 considering GCMs and RCPs one at a time ( $SD_{epi}$ ). We normalized these standard deviations  
 241 (reflecting uncertainties in GCMs, RCPs, and exposure-response functions, respectively)  
 242 dividing by their sum:  $SD_{gcm}+SD_{rcp}+SD_{epi}$ . It can be noted that the differentiation between  
 243 GCMs and RCPs in contributing to climate uncertainty was only possible for global warming  
 244 levels 1°C to 3°C, because results for higher warming levels were based on RCP8.5 only (cf.,  
 245 Table A3). Thus, for warming levels >3°C we only considered  $SD_{gcm}$  and  $SD_{epi}$ .

246

247 All computations were done using R (version 3.4.3) with packages *dlnm* and *mvmeta*. The  
248 code was partly adapted from Gasparrini et al. (2015), Gasparrini et al. (2017), and Vicedo-  
249 Cabrera et al. (2019), and is available on request from the first author.

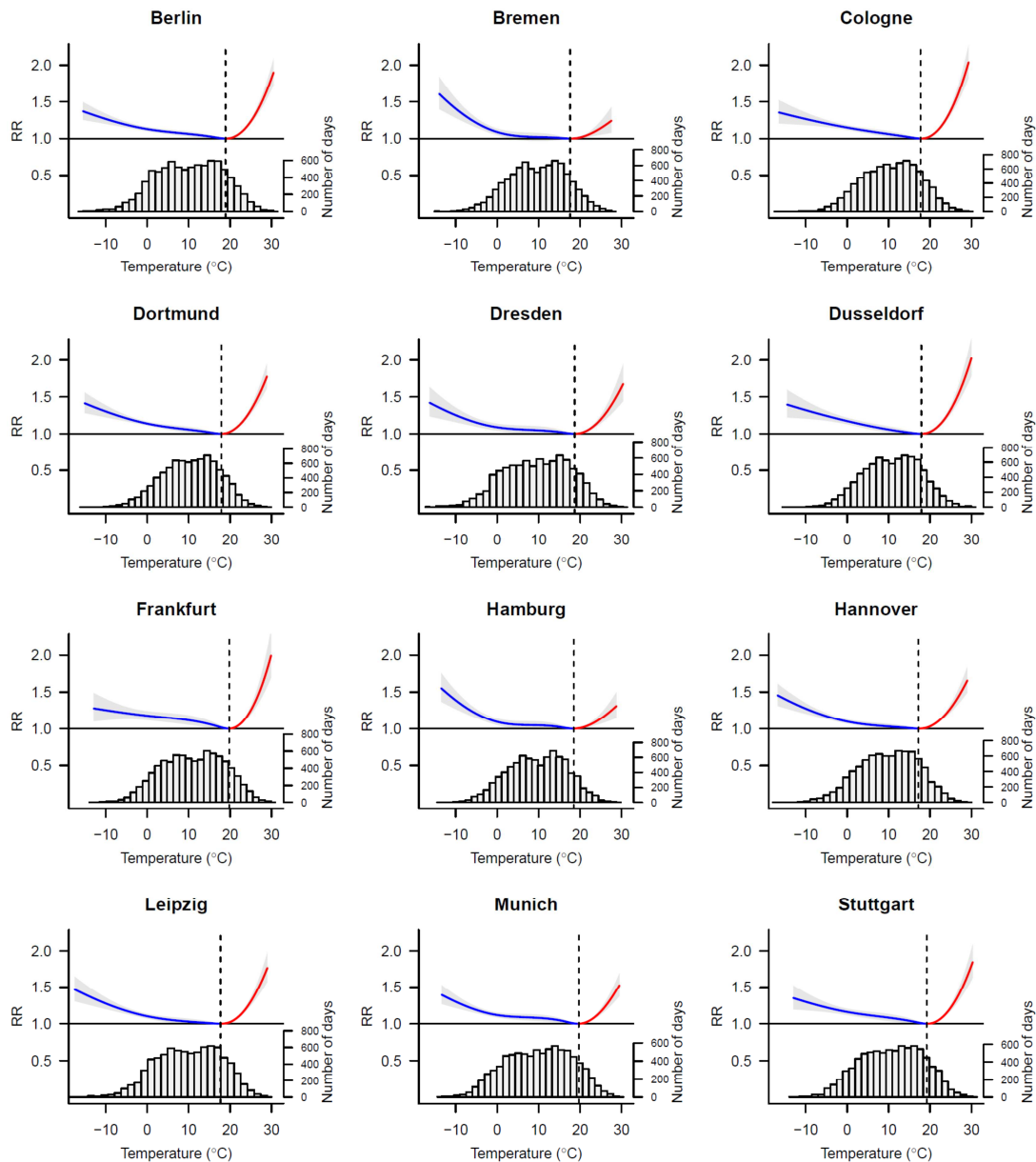
250

## 251 Results

252 Our dataset of 12 major German cities included a total of 3,105,865 deaths in the period  
253 1993-2015 (Table 1). The mean (min, max) of daily mean temperatures across cities was  
254 10.3°C (-17.5°C, 30.5°C). Overall cumulative temperature-mortality associations were  
255 relatively similar across cities (Fig. 2), showing a gradually rising RR for cold (i.e., below the  
256 MMT), and a more steeply increasing RR for heat (i.e., above the MMT). MMT estimates fell  
257 in the range 17.2°C to 19.8°C, corresponding to the 82<sup>th</sup> to 90<sup>th</sup> percentiles of the distribution  
258 of daily mean temperatures in the individual cities (Table 1). All cities showed a similar  
259 temporal lag structure: The effect of cold peaked a few days after the exposure and lasted  
260 up to 3 weeks, while the effect of heat was more immediate and vanished (or reversed sign,  
261 indicative of mortality displacement) after a few days (Fig. A4).

262

263 Total excess mortality attributable to non-optimal temperatures across cities was 6.30%  
264 (95%CI: 4.60 – 7.98) (Table 1). Out of this, 0.81% (95%CI: 0.72 – 0.89) were attributable to  
265 heat, and 5.49% (95%CI: 3.82 – 7.19) to cold. Comparing city-specific estimates, the lowest  
266 total excess mortality was observed in Bremen (3.56%; 95%CI: 0.23 – 6.81) and the highest in  
267 Frankfurt (9.59%; 95%CI: 5.99 – 12.87) (Table 1, Fig. 3). Confidence intervals of attributable  
268 fractions were significant (i.e., did not include zero) in all cities, except for cold attributable  
269 mortality in Bremen. The sensitivity analysis showed that modelling choices only marginally  
270 affected our estimates of present-day attributable fractions (Table A4).



271

272 **Figure 2.** Temperature-mortality associations in German cities estimated from observed deaths  
 273 counts and mean daily temperatures in 1993-2015. Mortality is reported as relative risk (RR) with  
 274 respect to the minimum mortality temperature- (MMT) (dashed line). Cold-related RR (temperature <  
 275 MMT) is shown in blue, heat-related RR (temperature >MMT) in red. Shading corresponds to  
 276 empirical 95% CIs. Lower panels depict daily mean temperature distributions.

277

278 Projections of excess mortalities for 1°C of GMT rise above pre-industrial levels, roughly  
 279 corresponding to historical global warming up to today, were very close to the estimates  
 280 based on observational data (Fig. 3). In all cities, heat excess mortality was projected to  
 281 increase from today's GMT level towards higher magnitudes of global warming, while cold  
 282 excess mortality was projected to decrease (Fig. 3, Table A6). Whereas at lower levels of  
 283 GMT rise cold contributed considerably stronger to total excess mortality than heat, this  
 284 pattern was reversed at higher levels of GMT rise (see crossing points of blue and red curves

285 in Fig. 3). For a 5°C increase in GMT above pre-industrial levels total excess mortality  
 286 attributable to non-optimal temperatures was projected to reach 9.02% (95%CI: 6.60 –  
 287 11.44) across cities, with heat contributing the larger part 5.75% (95%CI: 4.48 – 7.09), and  
 288 cold contributing only 3.27% (95%CI: 1.93 – 4.60) (Table 2, Fig. 3).

289

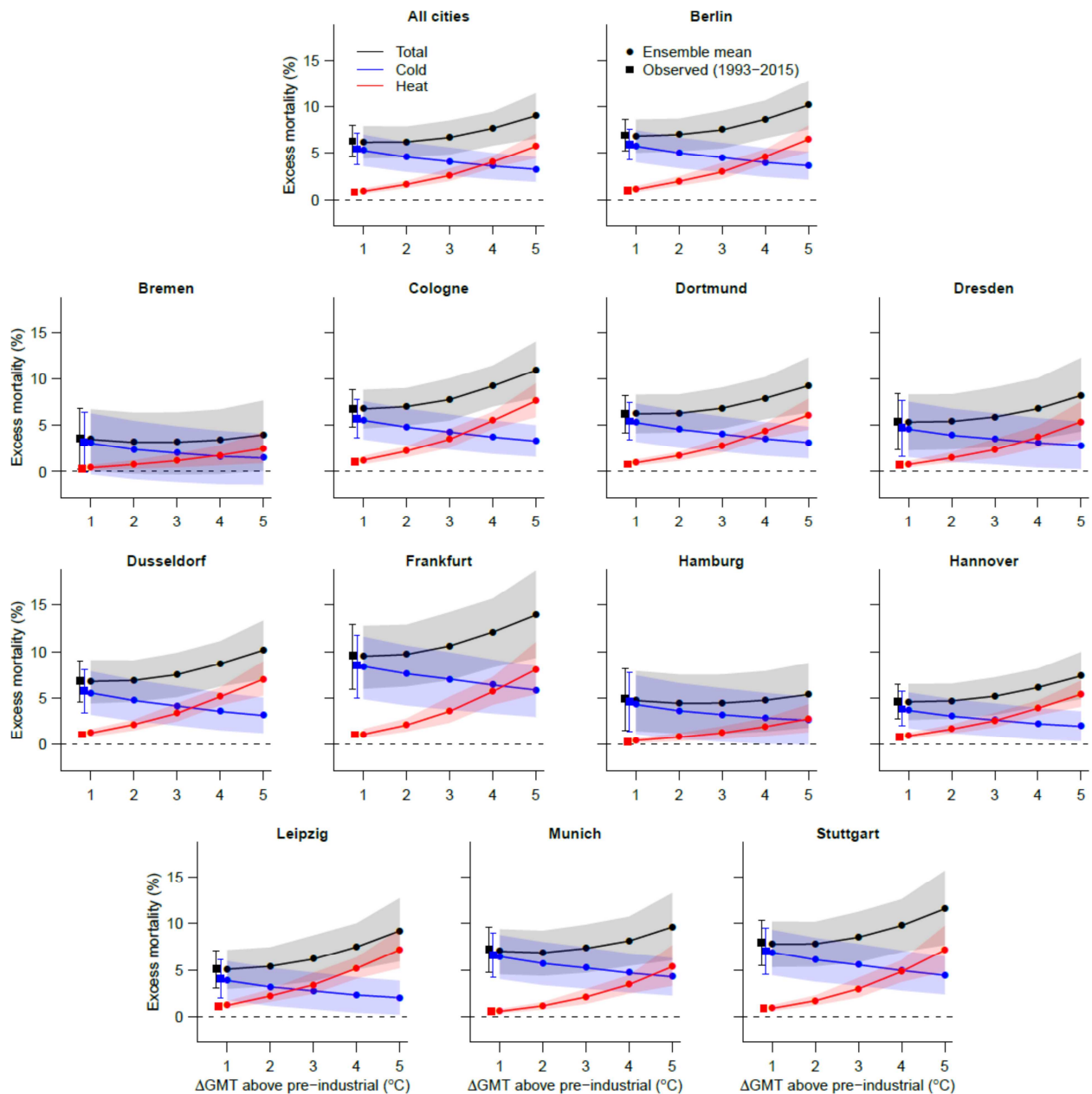
290 **Table 2.** Projected excess mortality (GCM-RCP-ensemble averages) at different levels of GMT rise  
 291 above pre-industrial for all 12 German cities combined. Relative changes (net differences, change  
 292 factor) are computed relative to 1°C GMT rise.

293

GMT rise above pre-industrial	Temperature range	Attributable fractions % (95%CI)	Net differences % (95%CI)	Change factor (95%CI)
1°C	Heat	0.89 (0.66 – 1.18)	-	-
	Cold	5.29 (3.61 – 6.99)	-	-
	Total	6.19 (4.45 – 7.92)	-	-
2°C	Heat	1.64 (1.25 – 2.01)	0.73 (0.41 – 1.03)	1.8 (1.4 – 2.3)
	Cold	4.58 (3.00 – 6.18)	-0.74 (-1.03 – -0.50)	0.9 (0.8 – 0.9)
	Total	6.22 (4.56 – 7.87)	-0.01 (-0.39 – 0.31)	1 (0.9 – 1.1)
3°C	Heat	2.60 (2.00 – 3.36)	1.68 (1.21 – 2.30)	2.8 (2.3 – 3.4)
	Cold	4.10 (2.59 – 5.62)	-1.22 (-1.68 – -0.87)	0.8 (0.7 – 0.8)
	Total	6.70 (4.87 – 8.51)	0.45 (-0.02 – 1.06)	1.1 (1 – 1.2)
4°C	Heat	4.06 (3.44 – 4.69)	3.26 (2.81 – 3.70)	5.1 (4.6 – 6)
	Cold	3.61 (2.20 – 5.02)	-1.72 (-2.11 – -1.35)	0.7 (0.6 – 0.7)
	Total	7.67 (5.83 – 9.45)	1.53 (0.96 – 2.06)	1.2 (1.1 – 1.4)
5°C	Heat	5.75 (4.48 – 7.09)	4.95 (3.84 – 6.10)	7.2 (6.5 – 7.9)
	Cold	3.27 (1.93 – 4.60)	-2.07 (-2.56 – -1.62)	0.6 (0.5 – 0.7)
	Total	9.02 (6.60 – 11.44)	2.88 (1.60 – 4.10)	1.5 (1.2 – 1.8)

294

295 In all cities, net changes in total excess mortality from today's 1°C to a 2°C increase in GMT  
 296 above pre-industrial levels were marginal and not significant from zero (Fig. 4). At this  
 297 warming level, projected increases in heat-related mortality were largely compensated for  
 298 by decreases in cold-related mortality. In most cities, significant net increases in total excess  
 299 mortality started to appear at 3°C, 4°C, or 5°C of GMT increase above pre-industrial levels  
 300 (Fig. 4, Table A6).



301

302

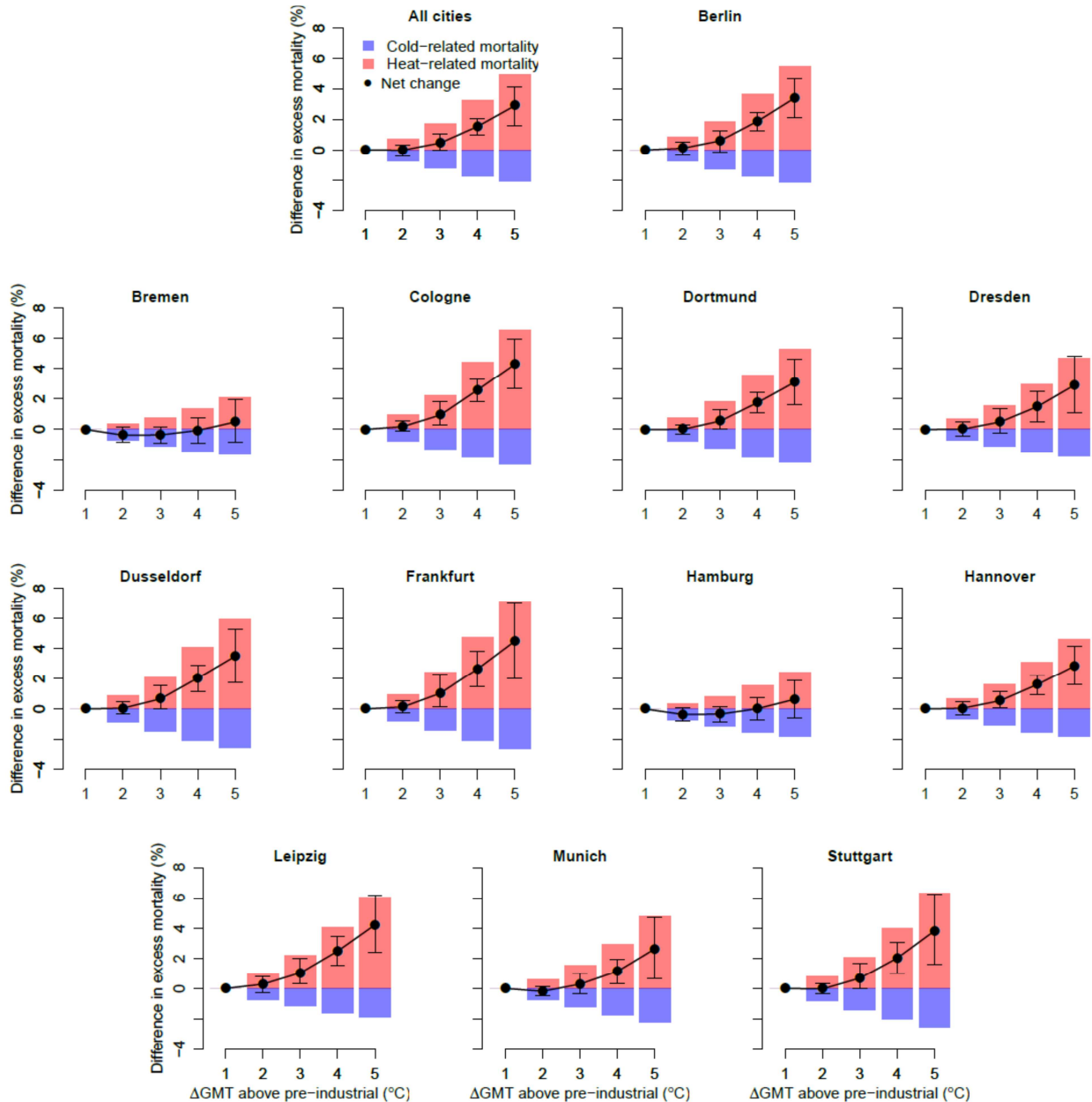
303 **Figure 3.** Projected total (black), cold-related (blue) and heat-related (red) excess mortality at  
 304 different levels of global warming, for all cities combined, and by individual city. Circles show mean  
 305 excess mortality, averaged across climate models (GCMs) and scenario types (RCPs), for considered  
 306 increases in global mean temperature ( $\Delta$ GMT) above pre-industrial levels. Squares depict excess  
 307 mortality estimates based on observations (see Table 1). Shading and whiskers correspond to  
 308 95% CIs, taking into account uncertainty related to temperature-mortality associations and climate  
 309 projections (GCMs and RCPs).

310

311 For all cities combined, total excess mortality was estimated to increase by 0.45% (95%CI: -  
 312 0.02 – 1.06) towards 3°C, 1.53% (95%CI: 0.96 – 2.06) towards 4°C and 2.88% (95%CI: 1.60 –  
 313 4.10) towards 5°C, compared to the current 1°C rise in GMT (Table 2, Fig. 4). Underlying  
 314 these net changes were marked increases in heat-related mortality by 1.68% (95%CI: 1.21 –  
 315 2.30) at 3°C, 3.26% (95%CI: 2.81 – 3.70) at 4°C, and 4.95% (95%CI: 3.84 – 6.10) at 5°C,

316 corresponding to a 2.8-fold (95%CI: 2.3 – 3.4), a 5.1-fold (95%CI: 4.6 – 6.0) and a 7.2-fold  
 317 (95%CI: 6.5 – 7.9) rise in heat-related excess mortality, respectively, compared to today's  
 318 warming of 1°C (Table 2, Fig. 4).

319



320

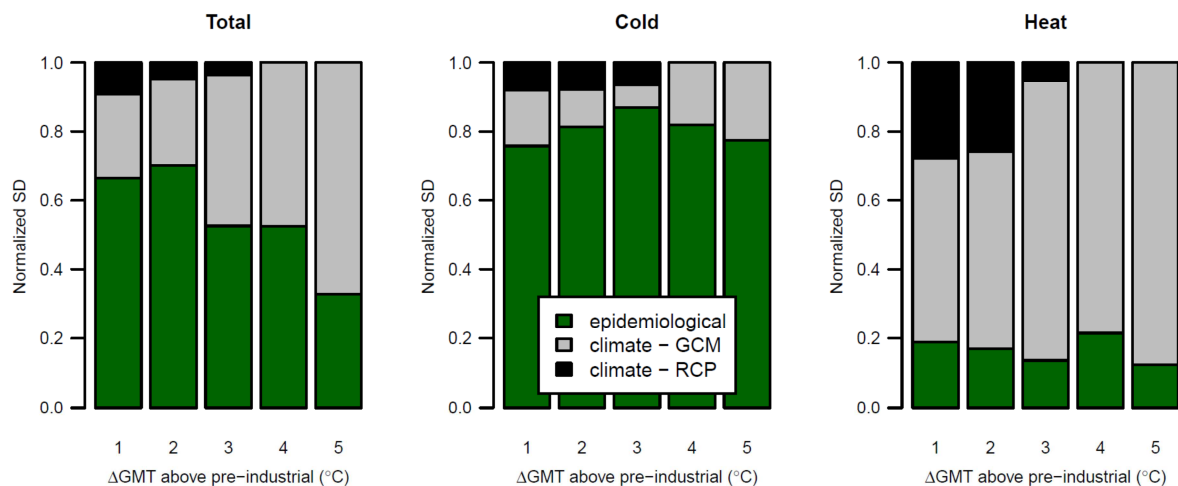
321 **Figure 4.** Differences in excess mortality compared to today's 1°C of global warming for all cities  
 322 combined, and by individual city. Bars and circles correspond to GCM-RCP-ensemble averages (cf. Fig.  
 323 3). Whiskers show 95%CI in net differences.

324

325 The estimated standard deviations indicated that differences in climate simulations  
 326 (originating from the use of various GCMs and from considering different RCPs) were the  
 327 dominant source of uncertainty in projections of heat-related excess mortality (Fig. 5). By  
 328 contrast, for cold-related mortality, uncertainties in the temperature-mortality associations



329 were the main contributor to total uncertainty in projections. Climate uncertainty  
 330 contributed increasingly to total uncertainty in projected total excess mortality along the  
 331 gradient of global warming considered. The choice of RCP was generally the least important  
 332 source of uncertainty, compared to differences among GCMs and uncertainties inherent in  
 333 exposure-response functions, with the exception of warming levels 1°C and 2°C for heat-  
 334 related mortality (Fig. 5).



335  
 336 **Figure 5.** Relative uncertainty (expressed as normalized SDs) arising from GCMs and RCPs (climate  
 337 uncertainty), and exposure-response functions (epidemiological uncertainty) in projections of total  
 338 excess mortality (left), cold-related excess mortality (middle) and heat-related excess mortality  
 339 (right) for all cities combined, by level of global warming.

## 341 Discussion

342 Here, we present for the first time a comprehensive assessment of temperature-related  
 343 excess mortality under current and possible future climate conditions in major German  
 344 cities, taking into account both heat- and cold-related mortality. Our findings indicate that  
 345 while low temperatures currently contribute stronger to overall excess mortality than high  
 346 temperatures across the cities studied, this pattern could be reversed if GMTs rise more than  
 347 3°C relative to pre-industrial levels. Higher levels of global warming on the order of 3°C, 4°C  
 348 and 5°C are accompanied in our projections with marked net increases in total temperature-  
 349 related excess mortality compared to today. By contrast, limiting the rise in GMT to 2°C  
 350 would avoid any significant change in total temperature-related mortality compared to  
 351 today. Yet, underlying increases in heat-related mortality at this warming level are still  
 352 considerable on a relative scale, with a mean projected 1.8-fold rise in the attributable  
 353 fraction across cities.

354

356 Our results on attributable mortality in the observational period (1993-2015) agree with  
357 Gasparrini et al. (2015), who found that a larger fraction of the current temperature-related  
358 excess mortality in cities around the world can be attributed to cold than to heat. The  
359 temperature-mortality associations estimated here are also in qualitative agreement with  
360 Breitner et al. (2014), who showed that both very low and very high ambient temperatures  
361 increase non-accidental mortality in three southern German cities. E.g., for Munich our RR  
362 estimates translate into a 8.7% and 19.9% increase in mortality between the 1<sup>st</sup> vs 10<sup>th</sup>, and  
363 99<sup>th</sup> vs 90<sup>th</sup> percentiles of daily mean temperatures, respectively, compared to 8.5% and  
364 6.8% estimated by Breitner et al. (2014). By contrast, a recent study on temperature-related  
365 mortality across all German counties (Karlsson and Ziebarth, 2018) found evidence for heat-  
366 related mortality, but remained inconclusive on the effect of cold. The difference with our  
367 findings might stem from methodological differences in modelling the lagged effects of  
368 temperature. In fact, Gasparrini (2017) suggested that simpler approaches such as moving  
369 averages or linear lag functions (as adopted by Karlsson and Ziebarth, 2018) tend to  
370 underestimate cold effects on mortality, compared to more sophisticated methods such as  
371 the DLNMs used in our study.

372  
373 Our findings on projected mortality qualitatively match the estimates presented recently by  
374 Vicedo-Cabrera et al. (2018), who found moderate increases in net excess mortality for  
375 warming levels 3°C and 4°C relative to 1.5°C for cities in Central Europe (which in this  
376 analysis comprise France, Switzerland, Czech Republic, and Moldova as the countries  
377 geographically closest to Germany). Our results can also be compared to the only study that  
378 has so far presented quantitative projections on heat- and cold-related mortality for the  
379 whole of Germany (Hübler et al., 2008). Disregarding the effect of an aging population, this  
380 study found a doubling of heat-related fatalities for a scenario (SRES A1B) corresponding to  
381 approximately 3°C global warming by the end of the century (conversion of scenario and  
382 time period into GMT level based on Ebi et al., 2018). Our aggregated results across all cities  
383 are approximately in line with these findings (Table 2: we found a mean increment factor of  
384 2.8 [95% CI: 2.3 – 3.4]). Furthermore, Hübler et al. (2008) found that at 3°C the effects of  
385 cold and heat only roughly balanced each other, with a slight surplus of additional deaths  
386 due to heat, which is also in accordance with our results.

387

388 Our study has several limitations. Most importantly, our projections do not take into account  
389 possible shifts in the vulnerability of the population towards non-optimal temperatures over  
390 time, which might occur due to demographic changes, alteration of health care services,  
391 physiological acclimatization, or adaptation measures. These shifts have been documented  
392 for the past, especially regarding decreasing vulnerability towards heat (e.g., Achebak et al.,  
393 2018; Barreca et al., 2016; ; Chung et al., 2018). Some recent projection studies have also  
394 explicitly accounted for demographic changes, based on age-specific exposure response  
395 functions (Lee et al., 2018; Rai et al., 2019). However, our approach does not easily allow us  
396 to incorporate these changes in time. By integrating different climate scenarios (RCPs) in our  
397 definition of global warming levels we break up the temporal structure of projections and  
398 thus cannot directly integrate possible future changes in demography or adaptive behaviour.  
399 Thus, our results should by no means be misinterpreted as future predictions of  
400 temperature-related excess mortality. Instead, our approach allows us to isolate the effect  
401 of climate from other socio-economic factors known to influence mortality.

402

403 Consistently with previous published studies we estimated large uncertainties in projected  
404 excess mortalities (Gasparrini et al., 2017; Vicedo-Cabrera et al., 2018), stemming from the  
405 imprecision in estimated temperature-mortality associations, from differences among GCMs,  
406 and from sampling uncertainty related to different RCPs. Yet, even though we capture  
407 important elements of the total uncertainty, there are some limitations to our uncertainty  
408 measures. First, our approach does not account for the uncertainty in choosing the  
409 functional form for extrapolating exposure-response curves beyond the maximum  
410 temperatures in the observational datasets (Benmarhnia et al., 2014; Vicedo-Cabrera et al.,  
411 2018). This shortcoming would lead to an underestimation of the contribution of  
412 epidemiological uncertainty to total uncertainty in heat-related mortality projections (Fig. 5).  
413 Second, by using temperature projections derived from transient climate simulations in a  
414 limited time period we base our estimates on an incomprehensive sampling of the  
415 temperature distributions corresponding to the different magnitudes of global warming  
416 considered. This concerns in particular the higher warming levels (4°C and 5°C), where our  
417 estimates are based on RCP8.5 simulations of two GCMs only (Table A3), and, thus, the  
418 resulting bias in the estimation of climate uncertainty should be greatest.

419

420 Last but not least, our study leaves to further research the more detailed investigation of  
421 observed heterogeneity between cities. Sera et al. (2019) recently showed that some of the  
422 differences in the magnitude of attributable fractions observed among cities around the  
423 world can be related to variability in external factors such as demographic parameters, air  
424 pollution levels, socio-economic indicators, and urban infrastructure. In this regard, it is  
425 interesting to note that the two cities with the most maritime climate, and thus the  
426 comparatively coolest summers, Bremen and Hamburg, showed the lowest heat-related  
427 excess mortality (Table 1). Further analyses relating differences in exposure-response  
428 functions to local climate characteristics is a promising avenue to account for potential shifts  
429 in vulnerability to non-optimal temperature in more refined future projection studies.

430

### 431 **Conclusions**

432 In conclusion, our findings show that keeping global warming below 2°C above pre-industrial  
433 levels implies considerable health benefits in German cities compared to higher warming  
434 levels, especially those to be reached if global greenhouse gas emissions are not drastically  
435 reduced in the coming decades. While we found marked net increases in temperature-  
436 related excess mortality for global warming by 3°C and more, ambitious mitigation in ac-  
437 cordance with the Paris Agreement would avoid a net increase in overall excess mortality  
438 compared to today. At the same time, even at 2°C of global warming, adaptation efforts  
439 would need to be implemented in order to buffer the estimated increase in heat-related  
440 mortality, which, independent of concomitant shifts in cold-related mortality, appears as a  
441 considerable future public health risk in Germany.

442

443

444

445

446

447

448

449

**450 List of abbreviations**

451 BLUPs: Best linear unbiased predictors; CI: Confidence interval; GCM: general circulation  
452 model (or global climate model); GMT: global mean temperature; MMT: minimum mortality  
453 temperature; RR: relative risk

454

**455 Funding sources**

456 This work was supported by the Spanish Ministry of Science and Innovation (Grant ID: PCIN-  
457 2017-046), the German Federal Ministry of Education and Research (Grant ID: 01LS1201A2),  
458 the European Union's Seventh Framework Programme for Research, Technological Devel-  
459 opment and Demonstration (Grant ID: 603860), Medical Research Council-UK (Grant ID:  
460 MR/M022625/1), the Natural Environment Research Council UK (Grant ID: NE/R009384/1),  
461 and a scholarship from the Potsdam Graduate School.

462

**463 Competing interests**

464 The authors declare that they have no known competing financial interests or personal rela-  
465 tionships that could have appeared to influence the work reported in this paper.

466

**467 Acknowledgements**

468 We would like to thank Urban Janisch from the Research Data Centres of the Federation and  
469 the Federal States of Germany for his advice in assembling the death count statistics.

470

**471 CRediT author contribution statement**

472 VH: Conceptualization, Methodology, Software, Formal analysis, Writing - Original Draft; LK:  
473 Investigation, Software, Writing - Review & Editing; CPO: Conceptualization, Methodology,  
474 Resources, Writing - Review & Editing; SL: Methodology, Data Curation, Writing - Review &  
475 Editing; AG: Methodology, Software, Writing - Review & Editing; AVC: Methodology, Soft-  
476 ware, Writing - Review & Editing; RG-H: Supervision, Writing - Review & Editing; KF: Funding  
477 acquisition, Writing - Review & Editing

478

479 **References**

- 480 Achebak, H., Devolder, D., Ballester, J., 2018. Heat-related mortality trends under recent  
481 climate warming in Spain: A 36-year observational study. *PLoS Med.* 15, 1–17.  
482 <https://doi.org/10.1371/journal.pmed.1002617>
- 483 Anderson, B.G., Bell, M.L., 2009. Weather-Related Mortality: How Heat, Cold, and Heat  
484 Waves Affect Mortality in the United States. *Epidemiology* 20, 205–213.  
485 <https://doi.org/10.1097/EDE.0b013e318190ee08>
- 486 Arbuthnott, K., Hajat, S., Heaviside, C., Vardoulakis, S., 2018. What is cold-related mortality?  
487 A multi-disciplinary perspective to inform climate change impact assessments. *Environ.*  
488 *Int.* 121, 119–129. <https://doi.org/10.1016/j.envint.2018.08.053>
- 489 Barreca, A., Clay, K., Deschênes, O., Greenstone, M., Shapiro, J.S., 2016. Adapting to Climate  
490 Change: The Remarkable Decline in the US Temperature-Mortality Relationship over  
491 the 20th Century. *J. Polit. Econ.* 124, 105–159. <https://doi.org/10.3386/w18692>
- 492 Benmarhnia, T., Sottile, M.-F., Plante, C., Brand, A., Casati, B., Fournier, M., Smargiassi, A.,  
493 2014. Variability in Temperature-Related Mortality Projections under Climate Change.  
494 *Environ. Health Perspect.* 122, 1293–8. <https://doi.org/10.1289/ehp.1306954>
- 495 Breitner, S., Wolf, K., Devlin, R.B., Diaz-sanchez, D., Peters, A., Schneider, A., 2014. Short-  
496 term effects of air temperature on mortality and effect modification by air pollution in  
497 three cities of Bavaria , Germany : A time-series analysis. *Sci. Total Environ.* 486, 49–61.  
498 <https://doi.org/10.1016/j.scitotenv.2014.03.048>
- 499 Carleton, T., Delgado, M., Greenstone, M., Houser, T., Hsiang, S., Hultgren, A., Jina, A., Kopp,  
500 R., Mccusker, K., Nath, I., Rising, J., Carleton, T., Delgado, M., Greenstone, M., Houser,  
501 T., Hultgren, A., Jina, A., Kopp, R., Mccusker, K., Rising, J., Rode, A., Seo, S., Simcock, J.,  
502 Viaene, A., Yuan, J., Zhang, A., 2018. Valuing the Global Mortality Consequences of  
503 Climate Change Accounting for Adaptation Costs and Benefits.  
504 <https://doi.org/10.2139/ssrn.3224365>
- 505 Chen, K., Breitner, S., Wolf, K., Rai, M., Meisinger, C., Heier, M., Kuch, B., Peters, A.,  
506 Schneider, A., 2019. Temperature-related myocardial infarction under and beyond Paris  
507 Agreement goals in Augsburg, Germany. *Dtsch Arztebl Int* 116, 521–7.  
508 <https://doi.org/10.3238/arztebl.2019.0521>
- 509 Chung, Y., Yang, D., Gasparri, A., Vicedo-Cabrera, A.M., Ng, C.F.S., Kim, Y., Honda, Y.,  
510 Hashizume, M., 2018. Changing susceptibility to non-optimum temperatures in Japan,

- 511 1972-2012: The role of climate, demographic, and socioeconomic factors. *Environ.*  
512 *Health Perspect.* 126, 057002-1-057002–8. <https://doi.org/10.1289/EHP2546>
- 513 Ebi, K.L., Hasegawa, T., Hayes, K., Monaghan, A., Paz, S., Berry, P., 2018. Health risks of  
514 warming of 1.5 °C, 2 °C, and higher above pre-industrial temperatures. *Environ. Res.*  
515 *Lett.* 13, 063007.
- 516 Frieler, K., Lange, S., Piontek, F., Reyer, C.P.O., Schewe, J., Warszawski, L., Zhao, F., Chini, L.,  
517 Denvil, S., Emanuel, K., Geiger, T., Halladay, K., Hurtt, G., Mengel, M., Murakami, D.,  
518 Ostberg, S., Popp, A., Riva, R., 2017. Assessing the impacts of 1.5 °C global warming –  
519 simulation protocol of the Inter-Sectoral Impact Model Intercomparison Project (   
520 ISIMIP2b ). *Geosci. Model Dev.* 4321–4345.
- 521 Gasparrini, A., 2017. Modelling lagged associations in environmental time series data : a  
522 simulation study. *Epidemiology* 27, 835–842.  
523 <https://doi.org/10.1097/EDE.0000000000000533>.
- 524 Gasparrini, A., Armstrong, B., Kenward, M.G., 2010. Distributed lag non-linear models. *Stat.*  
525 *Med.* 29, 2224–2234. <https://doi.org/10.1002/sim.3940>
- 526 Gasparrini, A., Armstrong, B., Kenward, M.G., 2012a. Multivariate meta-analysis for non-  
527 linear and other multi-parameter associations. *Stat. Med.*  
528 <https://doi.org/10.1002/sim.5471>
- 529 Gasparrini, A., Armstrong, B., Kovats, S., Wilkinson, P., 2012b. The effect of high  
530 temperatures on cause-specific mortality in England and Wales. *Occup. Environ. Med.*  
531 69, 56–61. <https://doi.org/10.1136/oem.2010.059782>
- 532 Gasparrini, A., Guo, Y., Hashizume, M., Lavigne, E., Zanobetti, A., Schwartz, J., Tobias, A.,  
533 Tong, S., Rocklöv, J., Forsberg, B., Leone, M., De Sario, M., Bell, M.L., Guo, Y.L.L., Wu,  
534 C.F., Kan, H., Yi, S.M., De Sousa Zanotti Stagliorio Coelho, M., Saldiva, P.H.N., Honda, Y.,  
535 Kim, H., Armstrong, B., 2015. Mortality risk attributable to high and low ambient  
536 temperature: A multicountry observational study. *Lancet* 386, 369–375.  
537 [https://doi.org/10.1016/S0140-6736\(14\)62114-0](https://doi.org/10.1016/S0140-6736(14)62114-0)
- 538 Gasparrini, A., Guo, Y., Sera, F., Vicedo-cabrera, A.M., Huber, V., Tong, S., Sousa, M. De,  
539 Stagliorio, Z., Hilario, P., Saldiva, N., Lavigne, E., Correa, P.M., Ortega, N.V., Kan, H.,  
540 Osorio, S., Kyselý, J., Urban, A., Jaakkola, J.J.K., Rytí, N.R.I., Pascal, M., Goodman, P.G.,  
541 Zeka, A., Michelozzi, P., Scortichini, M., Hashizume, M., 2017. Projections of  
542 temperature-related excess mortality under climate change scenarios. *Lancet Planet.*

- 543 Heal. 360–367. [https://doi.org/10.1016/S2542-5196\(17\)30156-0](https://doi.org/10.1016/S2542-5196(17)30156-0)
- 544 Huang, C., Barnett, A.G., Wang, X., Vaneckova, P., Fitzgerald, G., Tong, S., 2011. Projecting  
545 Future heat-related mortality under climate change scenarios: A systematic review.  
546 Environ. Health Perspect. 119, 1681–1690. <https://doi.org/10.1289/ehp.1103456>
- 547 Hübler, M., Klepper, G., Peterson, S., 2008. Costs of climate change: The effects of rising  
548 temperatures on health and productivity in Germany. Ecol. Econ. 68, 381–393.
- 549 Karlsson, M., Ziebarth, N.R., 2018. Population health effects and health-related costs of  
550 extreme temperatures : Comprehensive evidence from Germany. J. Environ. Econ.  
551 Manage. 91, 93–117. <https://doi.org/10.1016/j.jeem.2018.06.004>
- 552 Kendrovski, V., Baccini, M., Martinez, G.S., Wolf, T., Paunovic, E., Menne, B., 2017.  
553 Quantifying projected heat mortality impacts under 21st-Centurywarming conditions  
554 for selected European countries. Int. J. Environ. Res. Public Health 14.  
555 <https://doi.org/10.3390/ijerph14070729>Kinney, P.L., Schwartz, J., Pascal, M., Petkova,  
556 E., Tertre, A. Le, Medina, S., Vautard, R., 2015. Winter season mortality: will climate  
557 warming bring benefits? Environ. Res. Lett. 10, 064016. [https://doi.org/10.1088/1748-](https://doi.org/10.1088/1748-9326/10/6/064016)  
558 [9326/10/6/064016](https://doi.org/10.1088/1748-9326/10/6/064016)
- 559 Laschewski, G., Jendritzky, G., 2002. Effects of the thermal environment on human health :  
560 an investigation of 30 years of daily mortality data from SW Germany. Clim. Res. 21, 91–  
561 103.
- 562 Lee, J.Y., Lee, W.S., Ebi, K.L., Kim, H., 2019. Temperature-related summer mortality under  
563 multiple climate, population, and adaptation scenarios. Int. J. Environ. Res. Public  
564 Health 16. <https://doi.org/10.3390/ijerph16061026>
- 565 Li, T., Horton, R.M., Kinney, P.L., 2013. Projections of seasonal patterns in temperature-  
566 related deaths for Manhattan, New York. Nat. Clim. Chang. 3, 717–721.  
567 <https://doi.org/10.1038/nclimate1902>
- 568 Li, Y., Ren, T., Kinney, P.L., Joyner, A., Zhang, W., 2018. Projecting future climate change  
569 impacts on heat-related mortality in large urban areas in China. Environ. Res.  
570 <https://doi.org/10.1016/j.envres.2018.01.047>
- 571 Lo, E.Y.T., Mitchell, D.M., Gasparrini, A., Vicedo-Cabrera, A.M., Ebi, K.L., Frumhoff, P.C.,  
572 Millar, R.J., Roberts, W., Sera, F., Sparrow, S., Uhe, P., Williams, G., 2019. Increasing  
573 mitigation ambition to meet the Paris Agreement’s temperature goal avoids substantial  
574 heat-related mortality in U.S. Cities. Sci. Adv. 5, 1–10.



- 575 <https://doi.org/10.1126/sciadv.aau4373>
- 576 Martin, S.L., Cakmak, S., Hebborn, C.A., Avramescu, M.L., Tremblay, N., 2012. Climate change  
577 and future temperature-related mortality in 15 Canadian cities. *Int. J. Biometeorol.* 56,  
578 605–619. <https://doi.org/10.1007/s00484-011-0449-y>
- 579 Mitchell, D., Heaviside, C., Schaller, N., Allen, M., Ebi, K.L., Fischer, E.M., Gasparrini, A.,  
580 Harrington, L., Kharin, V., Shiogama, H., Sillmann, J., 2018. Extreme heat-related  
581 mortality avoided under Paris Agreement goals. *Nat. Clim. Chang.* 5–7.  
582 <https://doi.org/10.1038/s41558-018-0210-1>
- 583 Muthers, S., Laschewski, G., Matzarakis, A., 2017. The Summers 2003 and 2015 in South-  
584 West Germany : Heat Waves and Heat-Related Mortality in the Context of Climate  
585 Change. *Atmosphere.* 8. <https://doi.org/10.3390/atmos8110224>
- 586 Ostberg, S., Schewe, J., Childers, K., Frieler, K., 2018. Changes in crop yields and their  
587 variability at different levels of global warming. *Earth Syst. Dyn.* 479–496.
- 588 Rai, M., Breitner, S., Wolf, K., Peters, A., Schneider, A., Chen, K., 2019. Impact of climate and  
589 population change on temperature-related mortality burden in Bavaria, Germany.  
590 *Environ. Res. Lett.* 14, 124080. <https://doi.org/10.1088/1748-9326/ab5ca6>
- 591 Sanchez Martinez, G., Diaz, J., Hooyberghs, H., Lauwaet, D., De Ridder, K., Linares, C.,  
592 Carmona, R., Ortiz, C., Kendrovski, V., Adamonyte, D., 2018. Cold-related mortality vs  
593 heat-related mortality in a changing climate: A case study in Vilnius (Lithuania). *Environ.*  
594 *Res.* 166, 384–393. <https://doi.org/10.1016/j.envres.2018.06.001>
- 595 Sanderson, M., Arbuthnott, K., Kovats, S., Hajat, S., Falloon, P., 2017. The use of climate  
596 information to estimate future mortality from high ambient temperature : A systematic  
597 literature review. *PLoS One* 1–34.
- 598 Schaeffer, L., de Crouy-Chanel, P., Wagner, V., Desplat, J., Pascal, M., 2016. How to estimate  
599 exposure when studying the temperature-mortality relationship? A case study of the  
600 Paris area. *Int. J. Biometeorol.* 60, 73–83. <https://doi.org/10.1007/s00484-015-1006-x>
- 601 Schleussner, C.F., Lissner, T.K., Fischer, E.M., Wohland, J., Perrette, M., Golly, A., Rogelj, J.,  
602 Childers, K., Schewe, J., Frieler, K., Mengel, M., Hare, W., Schaeffer, M., 2016.  
603 Differential climate impacts for policy-relevant limits to global warming: The case of 1.5  
604 °C and 2 °C. *Earth Syst. Dyn.* 7, 327–351. <https://doi.org/10.5194/esd-7-327-2016>
- 605 Schwartz, J.D., Lee, M., Kinney, P.L., Yang, S., Mills, D., Sarofim, M.C., Jones, R., Streeter, R.,  
606 Juliana, A.S., Peers, J., Horton, R.M., 2015. Projections of temperature-attributable

- 607 premature deaths in 209 U.S. cities using a cluster-based Poisson approach. *Environ.*  
608 *Heal.* 14, 85. <https://doi.org/10.1186/s12940-015-0071-2>
- 609 Sera, F., Armstrong, B., Tobias, A., Vicedo-Cabrera, A.M., 2019. How urban characteristics  
610 affect vulnerability to heat and cold: a multi-country analysis. *Int. J. Epidemiol.*
- 611 Vicedo-Cabrera, A.M., Guo, Y., Sera, F., Huber, V., Schleussner, C.-F., Mitchell, D., Tong, S.,  
612 Sousa, M. de, Coelho, Z.S., Saldiva, P.H.N., Lavigne, E.O., Correa, P.M., Ortega, N.V., Al.,  
613 E., 2018. Temperature-related mortality impacts under and beyond Paris Agreement  
614 climate change scenarios. *Clim. Change.*
- 615 Vicedo-Cabrera, A.M., Sera, F., Gasparrini, A., 2019. Hands-on Tutorial on a Modeling  
616 Framework for Projections of Climate Change Impacts on Health. *Epidemiology* 30,  
617 321–329. <https://doi.org/10.1097/EDE.0000000000000982>
- 618 Wang, Y., Wang, A., Zhai, J., Tao, H., Jiang, T., Su, B., Yang, J., Wang, G., Liu, Q., Gao, C.,  
619 Kundzewicz, Z.W., Zhan, M., Feng, Z., Fischer, T., 2019. Tens of thousands additional  
620 deaths annually in cities of China between 1.5 °C and 2.0 °C warming. *Nat. Commun.* 10.  
621 <https://doi.org/10.1038/s41467-019-11283-w>
- 622 Weinberger, K.R., Haykin, L., Eliot, M.N., Schwartz, J.D., Gasparrini, A., Wellenius, G.A., 2017.  
623 Projected temperature-related deaths in ten large U.S. metropolitan areas under  
624 different climate change scenarios. *Environ. Int.* 107, 196–204.  
625 <https://doi.org/10.1016/j.envint.2017.07.006>
- 626 Weinberger, K.R., Spangler, K.R., Zanobetti, A., Schwartz, J.D., Wellenius, G.A., 2019.  
627 Comparison of temperature-mortality associations estimated with different exposure  
628 metrics. *Environ. Epidemiol.* 1. <https://doi.org/10.1097/ee9.0000000000000072>
- 629 Zacharias, S., Koppe, C., Mücke, H., 2015. Climate Change Effects on Heat Waves and Future  
630 Heat Wave-Associated IHD Mortality in Germany. *Climate* 100–117.  
631 <https://doi.org/10.3390/cli3010100>
- 632

**Highlights (no longer than 85 characters including spaces)**

Huber et al: Temperature-related excess mortality in German cities at 2°C and higher degrees of global warming

- German cities face risk of net mortality increases if global warming higher than 2°C
- Above 3°C of global warming heat may cause more deaths than cold in Germany
- Global warming of 4°C risks to quintuple heat-related mortality in German cities

Journal Pre-proof

**Declaration of interests**

The authors declare that they have no known competing financial interests or personal relationships that could have appeared to influence the work reported in this paper.

The authors declare the following financial interests/personal relationships which may be considered as potential competing interests: