

LETTER • OPEN ACCESS

## From Paris to Makkah: heat stress risks for Muslim pilgrims at 1.5 °C and 2 °C

To cite this article: Fahad Saeed *et al* 2021 *Environ. Res. Lett.* **16** 024037

View the [article online](#) for updates and enhancements.

You may also like

- [Internal variability in European summer temperatures at 1.5 °C and 2 °C of global warming](#)  
Laura Suarez-Gutierrez, Chao Li, Wolfgang A Müller *et al.*
- [Reduced impacts of heat extremes from limiting global warming to under 1.5 °C or 2 °C over Mediterranean regions](#)  
Hao Yu, Di Wu, Xiuting Piao *et al.*
- [Optimizing sowing window and cultivar choice can boost China's maize yield under 1.5 °C and 2 °C global warming](#)  
Mingxia Huang, Jing Wang, Bin Wang *et al.*

ENVIRONMENTAL RESEARCH  
LETTERS

## LETTER

## OPEN ACCESS

RECEIVED  
2 June 2020REVISED  
23 November 2020ACCEPTED FOR PUBLICATION  
3 December 2020PUBLISHED  
9 February 2021

Original content from  
this work may be used  
under the terms of the  
[Creative Commons  
Attribution 4.0 licence](#).

Any further distribution  
of this work must  
maintain attribution to  
the author(s) and the title  
of the work, journal  
citation and DOI.

From Paris to Makkah: heat stress risks for Muslim pilgrims at  
1.5 °C and 2 °CFahad Saeed<sup>1,2,3</sup> , Carl-Friedrich Schleussner<sup>1,2,4</sup> and Mansour Almazroui<sup>3</sup><sup>1</sup> Climate Analytics, Berlin, Germany<sup>2</sup> Potsdam Institute for Climate Impact Research, Potsdam, Germany<sup>3</sup> Center of Excellence for Climate Change Research/Department of Meteorology, King-Abdulaziz University, Jeddah,  
Saudi Arabia<sup>4</sup> IRITHEsys, Humboldt University, Berlin, GermanyE-mail: [fahad.saeed@climateanalytics.org](mailto:fahad.saeed@climateanalytics.org)**Keywords:** Hajj and Umrah, 1.5 °C, heat stress, climate changeSupplementary material for this article is available [online](#)**Abstract**

The pilgrimages of Muslims to Makkah (Hajj and Umrah) is one of the largest religious gatherings in the world which draws millions of people from around 180 countries each year. Heat stress during summer has led to health impacts including morbidity and mortality in the past, which is likely to worsen due to global warming. Here we investigate the impacts of increasing heat stress during the peak summer months over Makkah at present levels of warming as well as under Paris Agreement's targets of 1.5 °C and 2 °C global mean temperature increase above pre-industrial levels. This is achieved by using multi member ensemble projections from the half a degree additional warming, prognosis and projected impacts project. We find a substantial increase in the exceedance probabilities of dangerous thresholds (wet-bulb temperature >24.6 °C) in 1.5 °C and 2 °C warmer worlds over the summer months. For the 3 hottest months, August, September and October, even thresholds of extremely dangerous (wet-bulb temperature >29.1 °C) health risks may be surpassed. An increase in exceedance probability of dangerous threshold is projected by two and three times in 1.5 °C and 2 °C warmer worlds respectively for May as compared to the reference climate. September shows the highest increase in the exceedance probability of extremely dangerous threshold which is increased to 4 and 13 times in 1.5 °C and 2 °C warmer worlds respectively. Based on the indicators of hazard, exposure and vulnerability, we carried out probabilistic risk analysis of life-threatening heat stroke over Makkah. A ten time increase in the heat stroke risk at higher wet-bulb temperatures for each month is projected in 2 °C warmer world. If warming was limited to 1.5 °C world, the risk would only increase by about five times, or half the risk of 2 °C. Our results indicate that substantial heat related risks during Hajj and Umrah happening over peak summer months, as it is the case for Hajj during this decade, will require substantial adaptation measures and would negatively affect the performance of the rite. Stringent mitigation actions to keep the global temperature to 1.5 °C can reduce the risks of heat related illnesses and thereby reduce the non-economic loss and damage related to one of the central pillars of a world religion.

**1. Introduction**

Religious rites and celebrations are of fundamental importance to communities of faith all over the globe. The question, if and how climate change may affect the performance of such rites and celebrations is

therefore central to assess its full impacts. Specifically, religious ceremonies regularly draw together some of the biggest crowds on the planet (Pew Research Centre 2012). During summer months, such gatherings would be threatened by heat-related illnesses (Soomaroo and Murray 2012, Almazroui *et al* 2017),

which can range from minor (heat cramps, edema, prickly heat, and syncope) to serious conditions (heat exhaustion or heatstroke) (Abdelmoety *et al* 2018). One such event involving all these illnesses is Hajj, which is considered to be one of the largest congregations in the world, when millions of Muslims from across the globe travel to Makkah, Saudi Arabia every year, and visit the faith's holiest sites.

Hajj is one of the five pillars of Islam and is considered obligatory, at least once in the lifetime for all adult Muslims who are financially and physically healthy and capable (Khan and Shambour 2018). During Hajj, millions perform religious rites together during the short period, within a confined geographical area, making Hajj a very complex system to manage especially when the weather conditions are also not favorable (Yamin and Albugami 2014). During Hajj days, pilgrims mainly stay in tents (occupying  $<1.4 \text{ m}^2/\text{individual}$ ) in the plains of Mina, adjacent to Makkah, where they perform different rituals (Yamin and Albugami 2014). However, on the second day (called 'The day of Arafat'), there is a mass movement of all pilgrims from Mina to the plains of Arafat ( $\sim 15 \text{ km}$  on foot) starting from dawn until afternoon. All pilgrims then leave Arafat after sunset to spend night at Muzdalifa ( $\sim 9 \text{ km}$  trip) before going back to their tents in Mina (Noweir *et al* 2008). These and other such rites seem quite demanding, both physically and mentally, when it comes to performing Hajj in summer.

Besides Hajj, another minor pilgrimage called Umrah, also attracts large crowds towards Makkah throughout the year. Currently, both of these mass gatherings are attended each year by over 20 million Muslim pilgrims, and as per Saudi Government's Vision 2030 the number of Umrah pilgrims alone would reach 30 million by 2030 (Yezli *et al* 2017). This implies that the number of Umrah pilgrims per calendar month is expected to rival or even exceed the number of pilgrims during Hajj (Yezli *et al* 2017). Performing laborious religious rituals under scorching heat requires extra mental as well as physical strength, and thus puts many at risk of health hazards.

During these rituals, pilgrims are challenged by extensive stressors involving lengthened movement on foot among large crowds within a confined area, on steep inclines and rough terrain, wearing special outfits and being exposed to sun and thirst. Heat stroke and heat exhaustion may be less common problems among acclimatized Saudi Arabians, these however are the most common medical emergencies among the pilgrims from other parts of the world and lack of proper treatment could exacerbate the condition to organ failure, convulsions, coma, and increasing intracranial pressure (Ghaznawi and Ibrahim 1987). Additionally, diverse immunization makes the pilgrims more susceptible to acquire illnesses and acute infections (Shirah *et al* 2017).

In the Gregorian calendar, Hajj occurs 10 d earlier each succeeding year, and might occur during the boreal summer for several consecutive years, when the temperature usually exceeds  $45 \text{ }^\circ\text{C}$  (Khan and Alghafari 2018). Over the 21st century, dates of Hajj event fall during extreme heat conditions for three different decades. For the next 10 years, Hajj will take place during summer time (table S1, which is available online at [stacks.iop.org/ERL/16/024037/mmedia](https://stacks.iop.org/ERL/16/024037/mmedia)).

### 1.1. Heat stress in the middle east

Temperature and relative humidity are directly related to body heat exchange, and therefore best predict times when climate conditions become dangerous consistent with human thermal physiology (Mora *et al* 2017). A human body generates heat due to the process of metabolism which is dissipated to the surrounding environment, thus maintaining a body core temperature of  $\sim 37 \text{ }^\circ\text{C}$  (Raymond *et al* 2020). If the ambient temperature goes beyond this value, the second law of thermodynamics dictates that the human body would be unable to dissipate heat at a normal rate, thus resulting in body heat accumulation (Mora *et al* 2017). Similarly, the human body is capable of shedding heat through evaporative cooling which becomes ineffective at high values of relative humidity, and therefore body heat accumulation can occur at temperatures lower than the body core temperature. Indices of extreme heat that are solely based on ambient temperature, therefore, do not fully represent the amount of heat stress suffered by the human body (Li *et al* 2017, Ahmadalipour and Moradkhani 2018). An established indicator of heat stress which takes into account temperature-humidity combination is the wet bulb temperature ( $T_w$ ) which has been thoroughly employed as a measure of human discomfort in published literature (Pal and Eltahir 2016, Im *et al* 2017).

Outside physical activities which are part of the Hajj and Umrah rituals make pilgrims susceptible to heat stress. Although the extent of human mortality and morbidity is considerably modified by the facilities provided during the Hajj,  $T_w$  value of as low as  $21 \text{ }^\circ\text{C}$  has resulted in  $>100$  pilgrims falling victim to heat stroke in the past (Noweir *et al* 2008a). Assessment of future heat stress over the Middle East has received the interest of research community recently, and is considered as a hot spot where the  $T_w$  have been projected to reach  $35 \text{ }^\circ\text{C}$  (Pal and Eltahir 2016, Ahmadalipour and Moradkhani 2018). Saudi Arabia's plan to host substantially increased number of Hajj pilgrims by 2030 (Yezli *et al* 2017), also to accommodate an ever growing muslim population worldwide, makes the future heat stress risks due to global warming an issue of paramount importance (Pew Research Center 2011).

In a previous study carried out over South-west Asia, for the first time the implications of

future humid heatwaves on the Muslim ritual of Hajj under different greenhouse gas emission scenario were brought to the forefront (Pal and Eltahir 2016). This is followed by a recent study based on a wet-bulb estimation of future heat stress over Makkah with representative concentration pathways (RCP) 4.5 and RCP 8.5 using the output of three CMIP5 Global Climate Models (GCMs) (Kang *et al* 2019). Since a lot of planning is involved in hosting a ritual like Hajj that is performed by millions in a confined geographical area, robust information for relevant temperature targets like the one defined by UNFCCC in its Paris Agreement is of utmost importance (Schleussner *et al* 2015). Moreover in addition to computing the likelihood of future changes in a hazard like heat stress, a quantitative assessment of associated risks can play a crucial role in developing the roadmap for disaster risk reduction strategies (IPCC 2012). Moreover since Hajj takes place at different times of the year, provision of such information at sub-annual time scales is also critical for policy making.

In order to fill the above mentioned gaps in existing literature, we use data of a multimodel intercomparison project ‘Half a degree additional warming, prognosis and projected impacts’ (HAPPI), specially designed to examine patterns of extreme climate events at Paris Agreement targets of 1.5 °C and 2 °C (Mitchell *et al* 2017). HAPPI data has been used for assessing the avoided heat related mortality in key European cities in the past (Mitchell *et al* 2018). Here we aim to analyze the same dataset to identify how much heat stress can be avoided for Hajj pilgrims if we limit the global temperature rise to 1.5 °C as compared to 2 °C. The rest of the paper is organized as follows; the next section describes Data as well as methods used for the calculation of  $T_W$ , followed by Results and Discussion. The last section describes our main conclusions.

## 2. Data and methods

The HAPPI experiment is specifically designed to study the differences in the impacts of climate change at 1.5 °C and 2 °C above pre-industrial levels, and has been employed in a range of recent studies including on changes to the hydrological cycle, tropical seasonality and crop production (Döll *et al* 2018, Faye *et al* 2018, Schleussner *et al* 2018, Saeed *et al* 2018a). Three time periods (Reference 2006–2015, 1.5 °C and 2.0 °C above pre-industrial) are considered under HAPPI, each spanning 10 years. Further details about the experimental setup can be found in (Mitchell *et al* 2017). Here we use a set of four HAPPI GCMs (ECHAM6, MIROC5, CAM4-2degree and NorESM1) that have been bias corrected to improve the representation of regional features with ISI-MIP2b bias correction methodology using the EWEMBI (Earth2Observe, WFDEI and ERA-Interim data Merged and Bias-corrected for ISIMIP)

dataset (Lange 2017). In a previous assessment, this bias correction method has shown marked improvements in the mean values of multiple variables against observations, as well as their associated extremes for all the four HAPPI models used in this study (Saeed *et al* 2018b). In total, 19 ensemble members per GCM (Global Climate Model) are bias corrected which sums up to 760 years of daily data. Bias correction is carried out for historical as well as two future time periods for the two variables i.e. maximum temperature and relative humidity.

Daily wet-bulb temperature ( $T_W$ ) is calculated based on the empirical equation developed by (Stull 2011), and used for the region in the past application over middle east (Ahmadalipour and Moradkhani 2018). This equation is based on air temperature and relative humidity:

$$T_W = T \left[ 0.151977(\text{RH}\% + 8.313659)^{1/2} \right] + (T + \text{RH}\%) - (\text{RH}\% - 1.676131) + 0.00391838(\text{RH}\%)^{3/2} (0.023101\text{RH}\%) - 4.686035 \quad (1)$$

where  $T_W$ ,  $T$  and RH denote wet-bulb (°C), dry bulb (°C) and relative humidity (%).  $T_W$  can be calculated for any air temperature, and we use daily maximum near-surface air temperature for the calculation of  $T_W$  (Ahmadalipour and Moradkhani 2018). We calculate  $T_W$  for all the 19 bias corrected ensemble members of four GCMs as well as EWEMBI data which is used as proxy observation.

Furthermore, we construct a time series by taking the spatial average over the region (39.5° N–40.5° N; 20.5° E–21.5° E) around Makkah, and calculate the highest value of  $T_W$  for each time step. For the calculation of exceedance probabilities and risk ratio (RR) shown in figures 4 and 6, we rank the time series so that the highest value receives a rank of 1 (Makkonen 2006). For each value in the time series, the exceedance probability ( $p$ ) is calculated as;

$$p_i = \frac{m_i}{(n + 1)}; \text{ for } i = 1 \dots n \quad (2)$$

where  $m$  is the rank (rank 1 given to the highest value) and  $n$  represents the number of timesteps in the ensemble.

### 2.1. Assessing dangerous thresholds for Hajj activities

Despite the fact that physiological attributes of the human body and its tolerance to heat is distinct in different regions of the world (Ahmadalipour and Moradkhani 2018), different matrices and thresholds have been used to quantify the impact of wet bulb temperature. For instance, a  $T_W$  of 35 °C is considered a limit of human tolerance to heat stress as evaporative cooling at and beyond this limit becomes significantly less effective (Sherwood and

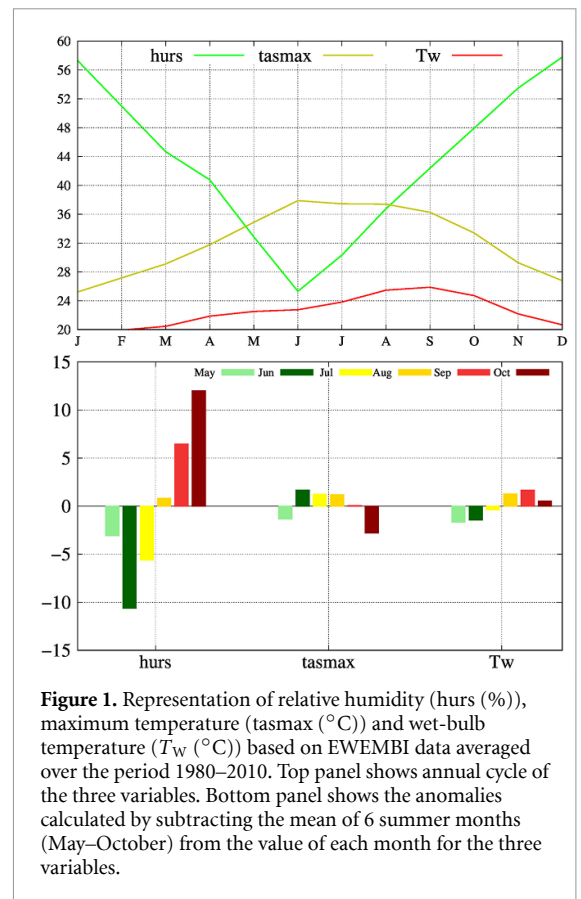
Huber 2010), a threshold which seldom occurred in the historical climate (Schär 2016, Raymond *et al* 2020). For physical labor or demanding outside activities, a  $T_W$  of 32 °C has been established as an upper limit beyond which such activities may not be safely conducted (Coffel *et al* 2017). In another study, the 84th percentile of daily  $T_W$  is considered as optimal wet-bulb temperature at which the heat-related mortality risk shows lowest value (Ahmadalipour and Moradkhani 2018).

A recent study over Makkah employed the criterion from U.S National Weather Service (USNWS) which defines ‘dangerous’ and ‘extremely dangerous’ thresholds of 24.6 °C and 29.1 °C respectively (Kang *et al* 2019). For the sake of consistency, and under the motivation to add further information to findings of the study by Kang *et al* (2019), we also use the USNWS definition of danger and extreme danger thresholds and align our analysis with these thresholds in the proceeding section.

### 3. Results

Like most of the middle east, the climate of the Arabian Peninsula is semi-arid to arid, with high annual temperatures and low precipitation. The regions has undergone a significant increase in surface temperature with the reported rate of increase of 0.10 °C per decade over the time period from 1960 to 2010 (Attada *et al* 2019). The city of Makkah is characterised by a strong annual cycle of relative humidity (hurs), while maximum temperature (tasmax) remain very hot to warm (figure 1). Westerly winds from Red Sea transport humid air into the region that results in the consistent increase of hurs from the lowest values in June to higher values towards the end of the year over Makkah (Kang *et al* 2019) (figure 1). At the same time, June shows highest tasmax values followed by July, August and September. Despite being the hottest month, top panel of figure 1 indicates that June has a lower value of  $T_W$ , while July, August, September and October come out as the top 4 months with highest  $T_W$  values.

To further explore the relative contribution of tasmax and hurs to  $T_W$ , the bottom panel of figure 1 presents anomalies for the 6 hottest months of the year over Makkah. The months from June to September show small variations in tasmax, while anomalies in  $T_W$  follow the pattern of hurs which changes gradually from negative to positive for these 4 months. In October, tasmax drops sharply while hurs has the maximum value among the summer months resulting in October to have third highest heat stress values over Makkah. This indicates that although  $T_W$  depends on both hurs and tasmax, large intraseasonal anomalies in hurs determine the relative severity of heat stress among the peak summer months over Makkah.

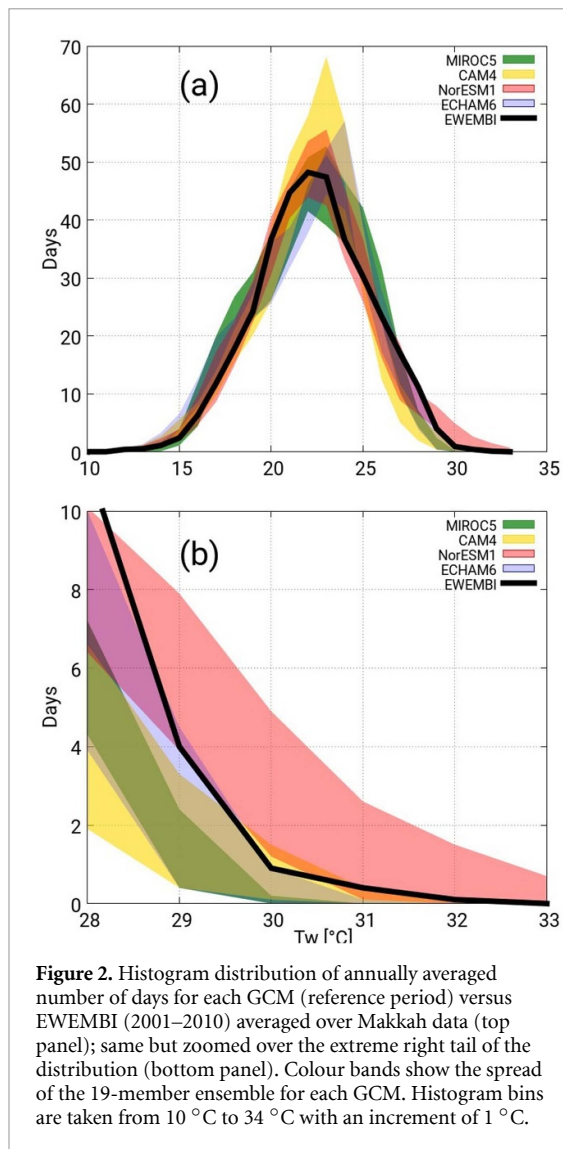


**Figure 1.** Representation of relative humidity (hurs (%)), maximum temperature (tasmax (°C)) and wet-bulb temperature ( $T_W$  (°C)) based on EWEMBI data averaged over the period 1980–2010. Top panel shows annual cycle of the three variables. Bottom panel shows the anomalies calculated by subtracting the mean of 6 summer months (May–October) from the value of each month for the three variables.

#### 3.1. Validation

The ability to capture observed features of the distribution of  $T_W$  varies across the four GCMs in the reference period as shown in figure 2(a). CAM4 overestimate the peak as compared to EWEMBI, while peak of ECHAM6 occur at higher temperature. However, no model significantly deviates from the observed curve that mostly falls within the inter-model ensemble spread. Further zooming into the tail of the distribution shows that three GCMs (CAM4, ECHAM6, MIROC5) underestimate the observed distribution while one model, NorESM1 overestimates it figure 2(b). However, the observed curve falls well within the multimodel ensemble band for both body as well as tail of the distribution, which shows the advantage of HAPPI-like experiments where individual models might show deviations but a multimodel multi-realization approach results in better representation of the present day climate.

All the GCMs show gradual shifts of their respective distributions towards higher temperatures in +1.5 °C and +2 °C worlds (figure 3). Zooming into the warm tails of the distribution for each model show a shift towards higher temperatures for CAM4, ECHAM6 and MIROC5. NorESM1, however, exhibits an unexpected behavior with respect to modeling the tail of the distribution with little difference between the distributions. Although it is possible to have a stationary signal in extreme value of a variable

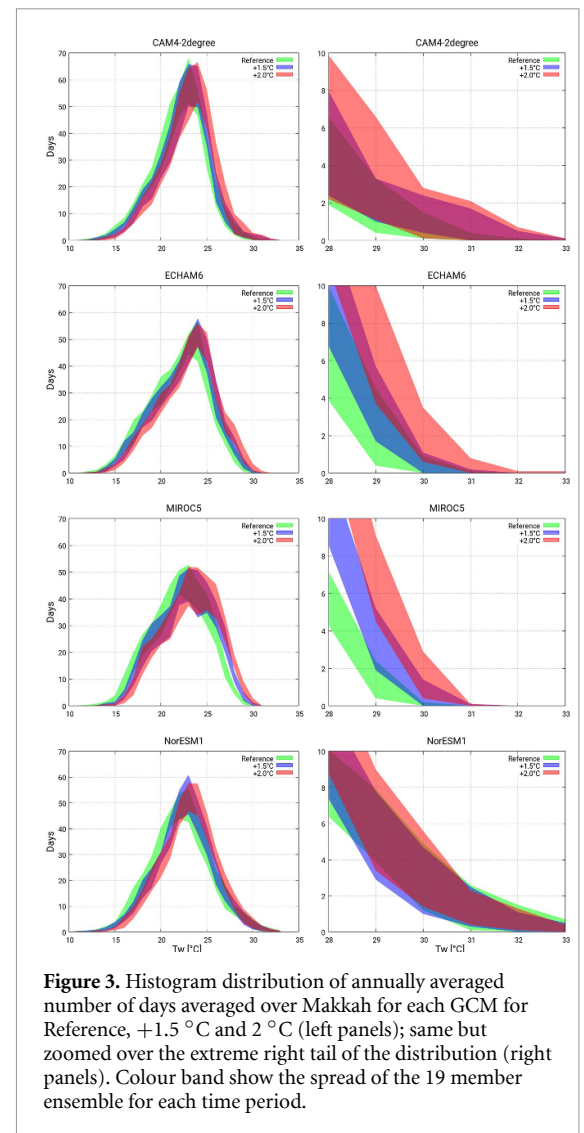


**Figure 2.** Histogram distribution of annually averaged number of days for each GCM (reference period) versus EWEMBI (2001–2010) averaged over Makkah data (top panel); same but zoomed over the extreme right tail of the distribution (bottom panel). Colour bands show the spread of the 19-member ensemble for each GCM. Histogram bins are taken from 10 °C to 34 °C with an increment of 1 °C.

under climate change while the mean of a distribution shifts, we do not have any previous reference of such a behaviour with other climate models used in the similar studies over Makkah (Pal and Eltahir 2016, Kang *et al* 2019), including the other three GCMs used in our analysis. We have no explanation of why this might be the case, but taken together with the bias of NorESM1 in simulating high number of days with extreme  $T_W$  (figure 2(b)), we decided to not consider this GCM further in the main analysis. The results including NorESM1 are however presented in the supplementary material section and referred in the text when necessary.

### 3.2. Exceedance probability assessment

Since the Hajj consists of 5 consecutive days, therefore in this section we derive wet-bulb temperature estimates using 5 d running average values of maximum temperature and relative humidity in order to carry out the assessment over the full Hajj period. Figure 4 presents the results for the ensemble exceedance probability curves for the peak summer months. This figure is plotted with approximately 17 000 values

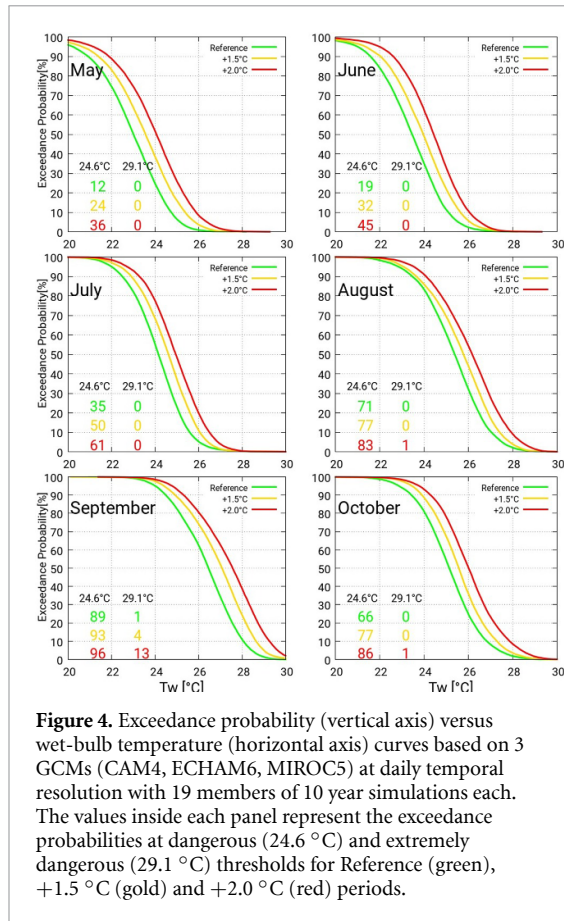


**Figure 3.** Histogram distribution of annually averaged number of days averaged over Makkah for each GCM for Reference, +1.5 °C and 2 °C (left panels); same but zoomed over the extreme right tail of the distribution (right panels). Colour band show the spread of the 19 member ensemble for each time period.

for every individual month, using output of three HAPPI GCMs each having 19 ensemble members of 10 years.

For each month, the probability values at lower  $T_W$  remain close to 100% for all warming levels, which gradually decrease towards higher  $T_W$  along with an increase in differences among the warming levels (figure 4). May has the lowest probability of crossing the dangerous threshold of 24.6 °C in the reference climate which gradually increases as we move towards the later summer months of the year. In future worlds, May indicates highest increase in the probability of crossing the dangerous threshold as compared to other summer months with two and three times increase in 1.5 °C and 2 °C warmer worlds respectively, relative to the historical period. In comparison, August and September already have high probabilities of the dangerous threshold which remain almost equally high in the warming worlds.

September is the only month showing a mere 1% probability of crossing the extremely dangerous threshold of 29.1 °C in reference period. However a substantial increase of 4 and 13 times is projected at

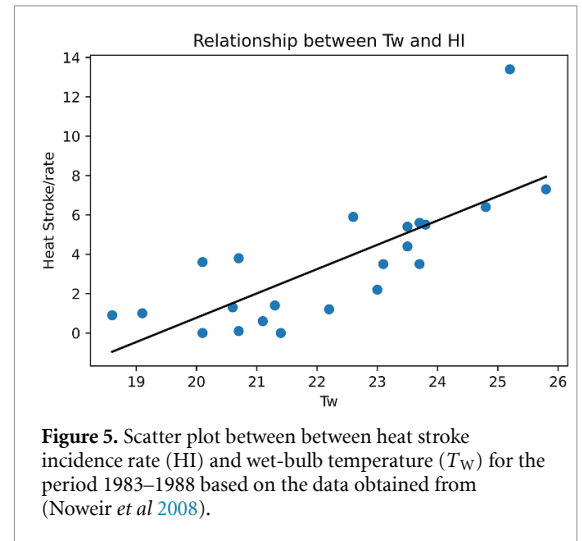


**Figure 4.** Exceedance probability (vertical axis) versus wet-bulb temperature (horizontal axis) curves based on 3 GCMs (CAM4, ECHAM6, MIROC5) at daily temporal resolution with 19 members of 10 year simulations each. The values inside each panel represent the exceedance probabilities at dangerous (24.6 °C) and extremely dangerous (29.1 °C) thresholds for Reference (green), +1.5 °C (gold) and +2.0 °C (red) periods.

1.5 °C and 2 °C warming levels respectively. A distinctive difference in the exceedance probabilities at different levels of global warming is also obvious at temperatures between dangerous and extremely dangerous thresholds in August and September. Similar plots for each individual model are also computed and are presented in figure S1. These results clearly indicate an increased likelihood of high  $T_W$  in both the warming worlds. This in turn will increase the risk of the pilgrims to become victims of the heat related illnesses, which we attempt to quantify in the following sub-section. In figure S2, we present the same results as figure 3, but also including NorESM1 in our ensemble. Inclusion of NorESM1 renders the values of dangerous threshold (24.6 °C) largely unchanged, however it affects the exceedance probabilities of crossing extremely dangerous thresholds (29.1 °C) by a great deal especially in the reference and 1.5 °C warmer world. This is a predicted behaviour considering NorESM1 showed almost similar extremes for all the warmer worlds in figure 3.

### 3.3. Heat stroke risks

Heat stroke is a life threatening illness characterized by an elevated core body temperature and dysfunction of the central nervous system (Yan et al 2006). To carry out probabilistic risk analysis of heat stroke in historical and warmer worlds, we follow the IPCC’s definition of risk as a product of the probability of



**Figure 5.** Scatter plot between between heat stroke incidence rate (HI) and wet-bulb temperature ( $T_W$ ) for the period 1983–1988 based on the data obtained from (Noweir et al 2008).

occurrence of an event and the adverse consequences (impact) of that event (IPCC 2012);

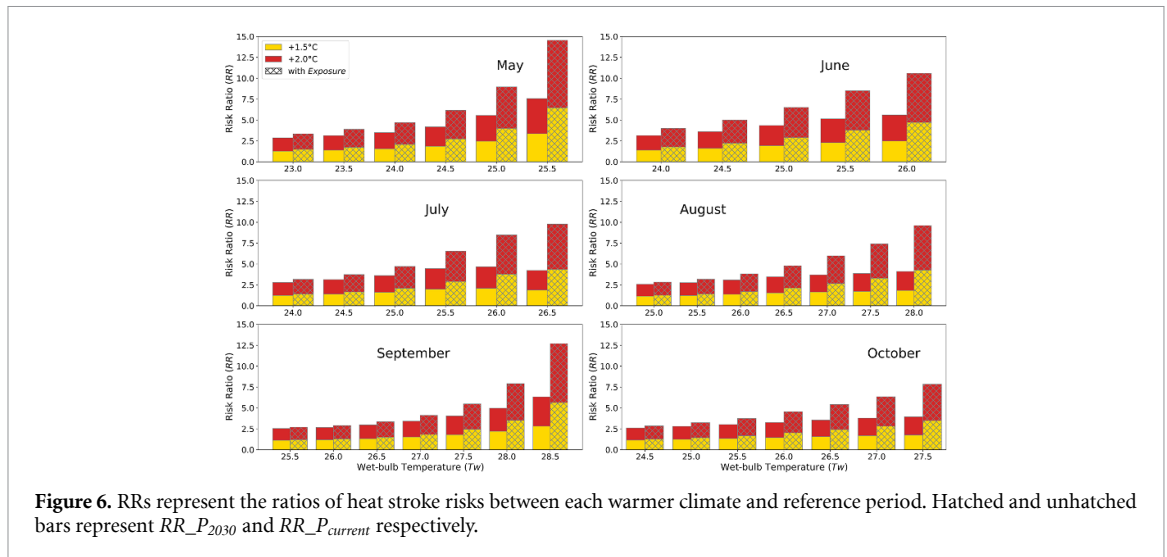
$$\text{Risk} = \text{Probability} \times \text{Consequence}. \quad (3)$$

In our case, the Probability refers to that of the hazard i.e.  $T_W$  at different levels, for which we take the values from figure 4 for reference as well as the warmer worlds. ‘Consequence’ captures the elements of exposure and vulnerability. For the reference period, the value for exposure is considered as the average number of pilgrims who performed Hajj in the recent past, approximated as two million (Yezli et al 2017). According to the Saudi Arabia’s vision 2030, the Kingdom plans to increase the number of pilgrims to 4.5 million by 2030 (Memish 2018). Therefore, we take 4.5 million as the number of exposed people for the two warmer worlds.

Last time when the Hajj occurred during the summer months of April–September was during the years 1983–1998 (table S1), when thousands of heat-affected pilgrims and even heat-related deaths were recorded (Noweir et al 2008a). Heat stroke incidence rate (HI) and averaged  $T_W$  during 5 Hajj days for each year during the aforementioned period are presented in figure 5 and table S2. Here we assume that HI captures the elements of vulnerability such as old age, lack of access to cooling facilities, non-acclimatization to hot climate etc. From the values presented in table S2, a simple linear regression based on ordinary least square method is developed to predict HI from  $T_W$ . A comprehensive check on the data is performed to verify the assumptions of linear regression which is presented in supplementary material. A following significant regression equation is found ( $F(1,20) = 28.28, p < 0.000$ ), with an  $R^2$  of 0.59;

$$HI = 1.235 T_W - 23.93. \quad (4)$$

Based on this relationship, we build probability density functions (pdfs) for HI by calculating the ensemble



**Figure 6.** RRs represent the ratios of heat stroke risks between each warmer climate and reference period. Hatched and unhatched bars represent  $RR_{P_{2030}}$  and  $RR_{P_{current}}$  respectively.

average of CAM4, ECHAM6 and MIROC5 for each of the 19 ensemble member (figure S3). The results show an obvious shift in the means of the distribution towards higher values of HI with global warming in almost all the summer months. However, variance shows inconsistent pattern across the summer months among three warming thresholds. For example, September indicates an increase in mean and the variance of the pdfs as we gradually move towards warmer worlds, while the least warm summer month of May shows a much high variance at 1.5 °C as compared to the reference and 2 °C worlds.

We further calculate the HI at different  $T_W$  values using model data that are then multiplied by 2 million and 4.5 million to give total heat stroke incidences representing present number of pilgrims ( $HI_{P_{current}}$ ) and projected number of pilgrims by 2030 ( $HI_{P_{2030}}$ ) respectively. Finally, heat stroke risk is calculated by multiplying  $HI_{P_{current}}$  and  $HI_{P_{2030}}$  with exceedance probabilities at different  $T_W$  levels, and presented in figure 6 as RRs between the reference and the two warmer climates. We note that health risks tend to increase non-linearly with warming, which render our results conservative (Watts et al 2018).

Figure 6 indicates low RRs as well as minor differences between both the warmer worlds at the respective smaller  $T_W$  values for each month. These differences and RRs, however, start to grow bigger as we move towards higher  $T_W$  which is attributed to higher differences in exceedance probabilities as well as vulnerabilities among the three periods.  $RR_{P_{current}}$  in 1.5 °C and 2 °C warmer worlds gets approximately doubled and quadrupled respectively as compared to the reference climate towards the higher values of  $T_W$ , and even more in some cases. This implies that at 1.5 °C global warming level, there will be twice the risk of heat stroke compared to the reference climate but it will be half of the 2 °C warmer world.

Similarly, the  $RR_{P_{2030}}$  for the highest  $T_W$  for each month is in the range of approximately 10 for 2 °C,

which is reduced to 5 in 1.5 °C warmer world. In the least warm month of May, the value of  $RR_{P_{2030}}$  goes as high as 14 at the  $T_W$  value of 25.5 °C for the global warming of 2 °C. It is important to note that in order to have sufficient representation of exceedance probabilities for each  $T_W$  limit, we applied a cutoff at the 98th percentile on the historical period for each month. Therefore, the extremely dangerous threshold does not appear in figure 6, however for August and September,  $T_W$  values approach this threshold with twice as high risks at global warming level of 2 °C compared to 1.5 °C.

#### 4. Discussion and conclusions

The present analysis is based on the large ensemble of the multiple GCM simulations tailored to provide the information on the Paris Agreement's relevant targets. The results presented indicate much higher likelihood of exceedance of dangerous and extremely dangerous heat stress levels as well as risks associated with them in the future warmer climates for religious mass gatherings like Hajj. We have noticed a substantial increase in the exceedance probability of dangerous temperature limit (24.6 °C  $T_W$ ) in May, June, July and October, while August, September and October are likely to have much higher probabilities of wet bulb temperatures approaching extremely dangerous thresholds (29.1 °C  $T_W$ ). Furthermore, risk of life threatening heat stroke is projected to increase significantly especially towards higher temperatures in each summer month. However stringent climate action to limit the global mean temperatures to 1.5 °C is projected to reduce these risks to half as compared to the 2 °C warmer world. Since there is a difference in the levels of threat among the four summer months, provision of such information at monthly scale is crucial to preempt a heat stroke disaster accordingly.



There are certain limitations to our approach. The resolution of GCMs is rather coarse and there is a potential to get further insights to the finding of present study by employing a high-resolution regional climate model. Moreover, the empirical function for the calculation of wet-bulb is employed at a relatively coarser temporal resolution (daily) which should be applied at the model time step (300–500 s) in the follow up studies. Another limitation of our analysis relates to the nature of the model simulations used. As shown in (Fischer *et al* 2018), prescribed SST experiments like the HAPPI experiment used here underestimate natural variability and thereby overestimate increases in probability ratios particularly in tropical regions. Using a fixed threshold of  $T_W$  24.6 °C and 29.1 °C instead of a percentile based one partly addresses the concern, but our representation of natural variability is most likely still too low. This implies that our estimates for exceedance probability of dangerous heat thresholds both for present and future warming periods should be considered conservative. Moreover, Our GCM-based analysis does not take local effects such as the Urban Heat Island (UHI) effect into consideration, which can raise temperature by several degrees as compared to non-urban areas. The expected temporary UHI effects during Hajj cannot easily be derived from long-term observational records, as the presence of millions of pilgrims strongly affects the local climate including both temperature and relative humidity, and hence once again render our results conservative.

Besides Hajj, our findings are also relevant for Umrah which is a much less laborious ritual than Hajj but draws millions of people for many months of the year. During the holy month of Ramadan, >7.5 million pilgrims visited Makkah in the recent years. The planned increase of Umrah pilgrims to 30 million per year by 2030 as compared to the present estimate of 19 million (Yezli *et al* 2017, Memish 2018) would substantially increase the heat load, especially during summer months, thus increasing the vulnerability of old and non-acclimatized pilgrims.

In this study, we intended to further the findings of the previous studies in order to highlight the adaptation implications of heat stress for Muslims pilgrimage at Paris Agreement's targets, and therefore a  $T_W$  based analysis is carried out to keep the consistency with those studies (Pal and Eltahir 2016, Kang *et al* 2019). A  $T_W$  is a direct thermal index which is exclusively based on meteorological data, however there are other available indices which falls under the category of empirical (e.g. physiological strain index (Moran *et al* 1998)) or rational (e.g. universal thermal climate index (Blazejczyk *et al* 2012)) thermal indices. Rational thermal index, which account for the interrelation between metabolic activities, clothing and environmental parameters, is especially relevant for the rituals of Hajj and Umrah because all

the pilgrims have to wear special dress called Ihram (Burgstall *et al* 2019). Ihram garment for men is composed of a sheet of cloth over shoulders and a sheet of cloth wrapped around the waist, both of white colour. Women's Ihram dress is normally a robe of any colour covering the whole body except hands and face (Noweir *et al* 2008). Therefore, the analysis of heat stress based on 'rational thermal indices' could be an important topic for follow up studies.

Our findings about climate impacts on the Hajj have important implications in the context of non-economic loss and damage (Serdeczny *et al* 2017). Even if the most severe heat stress related risks for pilgrims can be addressed by adaptation measures, those measures will most likely still alter the nature of the multi-century old religious rites performed there on annual basis leading to non-economic loss and damage. Religious and cultural heritage related to one of the important pillars for one of the world's biggest religious groupings would thus be affected by that loss.

The results of our study call for urgent actions to be taken in adopting strategies to counter impacts of heat stress during Hajj periods and other similar mass gatherings. Heat stress related risk will already be considerably elevated over the next decade. The differences in heat stroke risks between 1.5 °C and 2 °C warming will manifest for the next summer Hajj which span from 2047 onwards (compare table S1). With current national climate targets under the UNFCCC, the world is on track for an about 3 °C warming by the end of this century<sup>5</sup>, which would imply even bigger heat related risks for the third 20 year span of summer period Hajj starting in 2080. Therefore, Muslim countries may want to play a proactive role towards the implementation of Paris Agreement's target of keeping the global mean temperature to 1.5 °C above pre-industrial level in order to avoid profound risks for one of the central elements of their faith.

### Data availability statement

The data that support the findings of this study are openly available at the following URL/DOI: [https://redmine.dkrz.de/projects/happi-de/wiki/How\\_to\\_get\\_data\\_from\\_HAPPI\\_data\\_portal](https://redmine.dkrz.de/projects/happi-de/wiki/How_to_get_data_from_HAPPI_data_portal).

### Acknowledgments

The authors thank the HAPPI initiative and all participating modeling groups that have provided data. This research used science gateway resources of the National Energy Research Scientific Computing Center, a DOE Office of Science User Facility


<sup>5</sup> <https://climateactiontracker.org/global/temperatures/> (Accessed on 30.04.2020).

supported by the Office of Science of the US Department of Energy under Contract No. DE-AC02-05CH11231. C.F.S. acknowledges support by the German Federal Ministry of Education and Research (01LN1711A). F.S. acknowledges supported by the German Federal Ministry of Education and Research (BMBF, Grant No. 01LS1711E). M.A acknowledges support by the Deanship of Scientific Research (DSR) at King Abdulaziz University, Jeddah, Saudi Arabia under grant no. (FP-199-42)

The data is accessible from the repository through the following link [https://redmine.dkrz.de/projects/happi-de/wiki/How\\_to\\_get\\_data\\_from\\_HAPPI\\_data\\_portal](https://redmine.dkrz.de/projects/happi-de/wiki/How_to_get_data_from_HAPPI_data_portal).

## ORCID iDs

Fahad Saeed  <https://orcid.org/0000-0003-1899-9118>

Carl-Friedrich Schleussner  <https://orcid.org/0000-0001-8471-848X>

## References

- Abdelmoety D A, El-Bakri N K, Almomalld W O, Turkistani Z A, Bugis B H, Baseif E A, Melbari M H, Alharbi K and Abu-Shaheen A 2018 Characteristics of heat illness during Hajj: a cross-sectional study *Biomed. Res. Int.* **2018** 5629474
- Ahmadalipour A and Moradkhani H 2018 Escalating heat-stress mortality risk due to global warming in the Middle East and North Africa (MENA) *Environ. Int.* **117** 215–25
- Almazroui M, Nazrul Islam M, Saeed S, Alkhalaf A K and Dambal R 2017 Assessment of uncertainties in projected temperature and precipitation over the Arabian Peninsula using three categories of Cmp5 multimodel ensembles *Earth Syst. Environ.* **1** 23
- Attada R, Dasari H P, Chowdary J S, Yadav R K, Knio O and Hoteit I 2019 Surface air temperature variability over the Arabian Peninsula and its links to circulation patterns *Int. J. Climatol.* **39** 445–64
- Blazejczyk K, Epstein Y, Jendritzky G, Staiger H and Tinz B 2012 Comparison of UTCI to selected thermal indices *Int. J. Biometeorol.* **56** 515–35
- Burgstall A, Casanueva A, Kotlarski S and Schwierz C 2019 Heat warnings in Switzerland: Reassessing the choice of the current heat stress index *IJERPH* **16** 2684
- Coffel E D, Horton R M and de Sherbinin A 2017 Temperature and humidity based projections of a rapid rise in global heat stress exposure during the 21st century *Environ. Res. Lett.* **13** 014001
- Döll P, Trautmann T, Gerten D, Schmied H M, Ostberg S, Saeed F and Schleussner C-F 2018 Risks for the global freshwater system at 1.5 °C and 2 °C global warming *Environ. Res. Lett.* **13** 044038
- Faye B et al 2018 Impacts of 1.5 versus 2.0 °C on cereal yields in the West African Sudan Savanna *Environ. Res. Lett.* **13** 034014
- Fischer E M, Beyerle U, Schleussner C F, King A D and Knutti R 2018 Biased estimates of changes in climate extremes from prescribed SST simulations *Geophys. Res. Lett.* **45** 8500–09
- Ghaznawi H I and Ibrahim M A 1987 Heat stroke and heat exhaustion in pilgrims performing the Haj (annual pilgrimage) in Saudi Arabia *Ann. Saudi Med.* **7** 323–6
- Im E S, Pal J S and Eltahir E A B 2017 Deadly heat waves projected in the densely populated agricultural regions of South Asia *Sci. Adv.* **3** 1–8
- IPCC 2012 *Managing the Risks of Extreme Events and Disasters to Advance Climate Change Adaptation (SREX)*, ed C B Field, V Barros, T F Stocker and Q Dahe (Cambridge: Cambridge University Press)
- Kang S, Pal J S and Eltahir E A B 2019 Future heat stress during Muslim pilgrimage (Hajj) projected to exceed 'extreme danger' levels *Geophys. Res. Lett.* **46**
- Khan E A and Shambour M K Y 2018 An analytical study of mobile applications for Hajj and Umrah services *Appl. Comput. Inf.* **14** 37–47
- Khan S and Alghafari Y 2018 Temperature, precipitation and relative humidity fluctuation of Makkah Al Mukarramah, kingdom of Saudi Arabia (1985–2016) *Trans. Mach. Learn. Artif. Intell.* **6** 42
- Lange S 2017 Bias correction of surface downwelling longwave and shortwave radiation for the EWEMBI dataset *Earth Syst. Dyn. Discuss.* **2017** 1–30
- Li C, Zhang X, Zwiers F, Fang Y and Michalak A M 2017 Recent very hot summers in northern hemispheric land areas measured by wet bulb globe temperature will be the norm within 20 years *Earth's Futur.* **5** 1203–16
- Makkonen L 2006 Plotting positions in extreme value analysis *J. Appl. Meteorol. Climatol.* **45** 334–40
- Memish Z A 2018 Health of the Hajj *Science* **361** 533
- Mitchell D et al 2017 Half a degree additional warming, prognosis and projected impacts (HAPPI): background and experimental design *Geosci. Model Dev.* **10** 571–83
- Mitchell D et al 2018 Extreme heat-related mortality avoided under Paris agreement goals *Nat. Clim. Change* **8** 551–3
- Mora C et al 2017 Global risk of deadly heat *Nat. Clim. Change* **9** 501–6
- Moran D S, Shitzer A and Pandolf K B 1998 A physiological strain index to evaluate heat stress *Am. J. Physiol. Regul. Integr. Comp. Physiol.* **275** R129–R134
- Noweir M H, Bafail A O and Jomoah I M 2008 Study of heat exposure during Hajj (pilgrimage) *Environ. Monit. Assess.* **147** 279–95
- Pal J S and Eltahir E A B 2016 Future temperature in southwest Asia projected to exceed a threshold for human adaptability *Nat. Clim. Change* **6** 197–200
- Pew Research Center 2011 The future of the global Muslim population. projections for 2010–2030 (Popul. Sp. Place) 13 1–221
- Pew Research Centre 2012 The global religious landscape (Pew Res. Cent.) 81 (available at: [www.pewforum.org/files/2012/12/globalReligion-full.pdf](http://www.pewforum.org/files/2012/12/globalReligion-full.pdf))
- Raymond C, Matthews T and Horton R M 2020 The emergence of heat and humidity too severe for human tolerance *Sci. Adv.* **6** eaaw1838
- Saeed F, Bethke I, Fischer E, Legutke S, Shiogama H, Stone D A and Schleussner C-F 2018a Robust changes in tropical rainy season length at 1.5 °C and 2 °C *Environ. Res. Lett.* **13** 064024
- Saeed F, Bethke I, Lange S, Lierhammer L, Shiogama H, Stone D A, Trautmann T and Schleussner C-F 2018b Bias correction of multi-ensemble simulations from the HAPPI model intercomparison project *Geosci. Model Dev. Discuss.* 1–23
- Schär C 2016 The worst heat waves to come *Nat. Clim. Change* **6** 128–9
- Schleussner C-F et al 2015 Differential climate impacts for policy-relevant limits to global warming: the case of 1.5 °C and 2 °C *Earth Syst. Dyn. Discuss.* **6** 2447–505
- Schleussner C et al 2018 Crop productivity changes in 1.5 °C and 2 °C worlds under climate sensitivity uncertainty *Environ. Res. Lett.* **13** 064007
- Serdeczny O M, Bauer S and Huq S 2017 Non-economic losses from climate change: opportunities for policy-oriented research *Clim. Dev.* **0** 1–5
- Sherwood S C and Huber M 2010 An adaptability limit to climate change due to heat stress *Proc. Natl Acad. Sci. USA* **107** 9552–5

- Shirah B H, Zafar S H, Alferaidi O A and Sabir A M M 2017 Mass gathering medicine (Hajj pilgrimage in Saudi Arabia): the clinical pattern of pneumonia among pilgrims during Hajj *J. Infect. Public Health.* **10** 277–86
- Soomaroo L and Murray V 2012 Weather and environmental hazards at mass gatherings *PLoS Curr.* **4** e4fca9ee30afc4
- Stull R 2011 Wet-bulb temperature from relative humidity and air temperature *J Appl. Meteorol. Climatol.* **50** 2267–9
- Watts N *et al* 2018 The 2018 report of the Lancet countdown on health and climate change: shaping the health of nations for centuries to come *Lancet* **392** 2479–514
- Yamin M and Albugami M A 2014 *An Architecture for Improving Hajj Management* (Berlin: Springer) pp 187–96
- Yan Y E, Zhao Y Q, Wang H and Fan M 2006 Pathophysiological factors underlying heatstroke *Med Hypotheses* **67** 609–17
- Yezli S, Yassin Y, Awam A, Attar A, Al-Jahdali E and Alotaibi B 2017 Umrah. An opportunity for mass gatherings health research *Saudi Med. J.* **38** 868–71