



OPEN

# Quantifying Earth system interactions for sustainable food production via expert elicitation

Anna Chrysafi <sup>1,2</sup>✉, Vili Virkki <sup>1</sup>, Mika Jalava <sup>1</sup>, Vilma Sandström<sup>1</sup>, Johannes Piipponen <sup>1</sup>, Miina Porkka <sup>1,3</sup>, Steven J. Lade <sup>4,5</sup>, Kelsey La Mere<sup>6</sup>, Lan Wang-Erlandsson <sup>4,7</sup>, Laura Scherer <sup>8</sup>, Lauren S. Andersen <sup>9</sup>, Elena Bennett<sup>10,11</sup>, Kate A. Brauman <sup>12</sup>, Gregory S. Cooper<sup>13,14</sup>, Adriana De Palma<sup>15</sup>, Petra Döll <sup>16,17</sup>, Andrea S. Downing <sup>3,4</sup>, Timothy C. DuBois<sup>4</sup>, Ingo Fetzer <sup>4,7</sup>, Elizabeth A. Fulton <sup>18,19</sup>, Dieter Gerten <sup>9,20</sup>, Hadi Jaafar <sup>21</sup>, Jonas Jägermeyr <sup>9,22,23</sup>, Fernando Jaramillo <sup>24,25</sup>, Martin Jung <sup>26</sup>, Helena Kahiluoto <sup>27</sup>, Luis Lassaletta <sup>28</sup>, Anson W. Mackay<sup>29</sup>, Daniel Mason-D'Croz <sup>30,31,32</sup>, Mesfin M. Mekonnen <sup>33</sup>, Kirsty L. Nash <sup>19,34</sup>, Amandine V. Pastor <sup>35,36,37</sup>, Navin Ramankutty <sup>38,39</sup>, Brad Ridoutt <sup>31,40</sup>, Stefan Siebert <sup>41,42</sup>, Benno I. Simmons <sup>43</sup>, Arie Staal <sup>44</sup>, Zhongxiao Sun <sup>8,45</sup>, Arne Tobian <sup>4,9</sup>, Arkaitz Usubiaga-Liaño <sup>46,47</sup>, Ruud J. van der Ent <sup>48</sup>, Arnout van Soesbergen<sup>49,50</sup>, Peter H. Verburg <sup>51</sup>, Yoshihide Wada <sup>26</sup>, Sam Zipper <sup>52</sup> and Matti Kummu <sup>1</sup>✉

**Several safe boundaries of critical Earth system processes have already been crossed due to human perturbations; not accounting for their interactions may further narrow the safe operating space for humanity. Using expert knowledge elicitation, we explored interactions among seven variables representing Earth system processes relevant to food production, identifying many interactions little explored in Earth system literature. We found that green water and land system change affect other Earth system processes strongly, while land, freshwater and ocean components of biosphere integrity are the most impacted by other Earth system processes, most notably blue water and biogeochemical flows. We also mapped a complex network of mechanisms mediating these interactions and created a future research prioritization scheme based on interaction strengths and existing knowledge gaps. Our study improves the understanding of Earth system interactions, with sustainability implications including improved Earth system modelling and more explicit biophysical limits for future food production.**

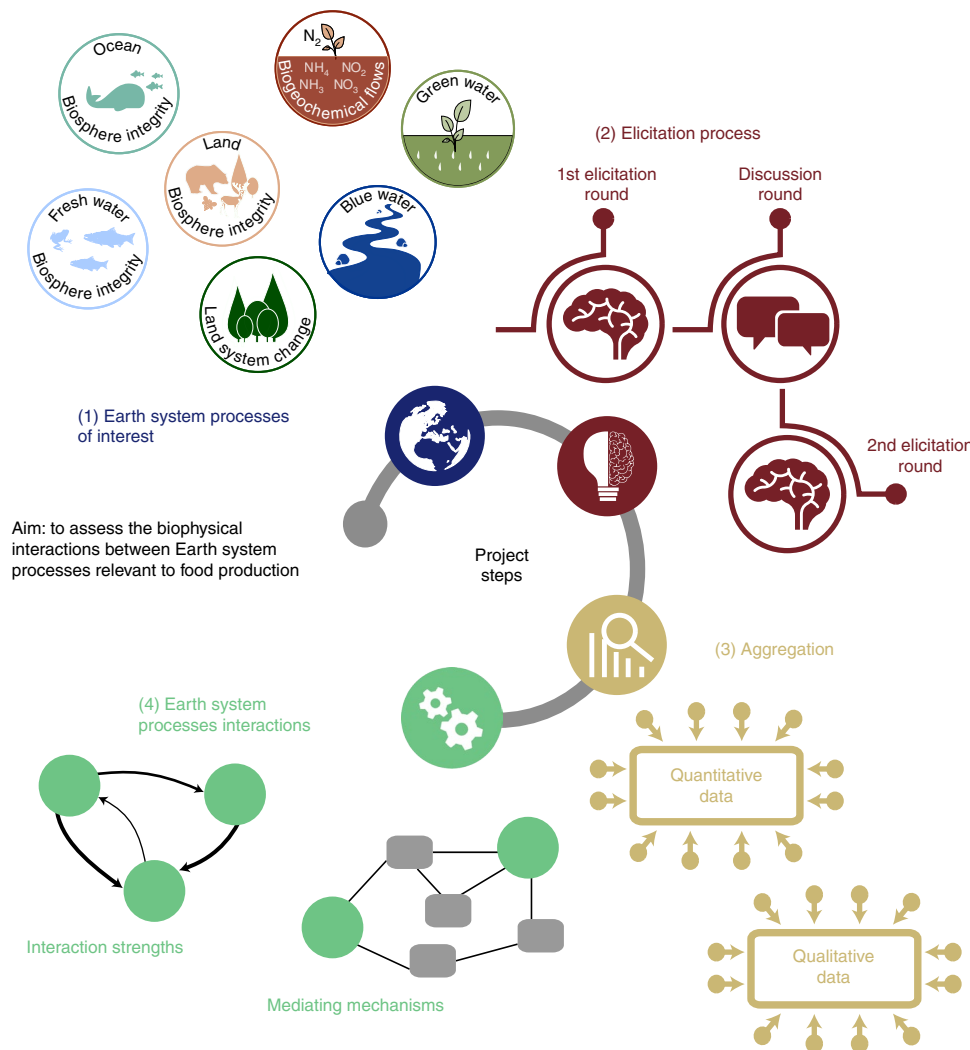
Food production is the main cause of environmental impacts such as biodiversity loss<sup>1,2</sup>, eutrophication<sup>3</sup> and overexploitation of marine resources<sup>4</sup>. In particular, agriculture drives 80% of global deforestation and 70% of freshwater withdrawals<sup>5</sup>. Human pressures may have already pushed the Earth system beyond the safe operating space for humanity, as demarcated by the nine planetary boundaries describing critical Earth system processes<sup>6,7</sup>. Beyond these boundaries, the risk of abrupt or irreversible global environmental change increases, with the potential to push the Earth system out of its stable Holocene condition, thus threatening the capacity of humanity to develop and thrive<sup>7,8</sup>.

Recent literature and modelling studies<sup>9,10</sup> provide the first quantitative estimates of an array of interactions among the Earth system processes represented by the planetary boundaries. Their findings suggest that the cascades and feedbacks of interactions amplify human impacts on the Earth system. Accounting for these interactions may narrow the estimated global safe operating space for human activities but also illuminate synergies: decreasing impacts on one Earth system process may decrease impacts on others. Given that many interactions relevant to food production are not quantified by existing studies<sup>9,10</sup> and that marine processes have received relatively little attention within the planetary boundaries literature<sup>11</sup>, achieving sustainable food futures may require even greater food system reforms than previously suggested<sup>12</sup>.

Interactions among Earth system processes are challenging to account for in food system analyses and spatially disaggregated models. The interactions and interaction strengths are partially unknown; they can be context-specific and not all control variables are suitable for spatial models. Thus, research on respecting the global safe operating space is complemented by exploring how to stay within critical limits of ecosystems at smaller scales<sup>13</sup>. The effects of perturbations on key Earth system processes are often manifested locally<sup>1,13–15</sup>, aiding in detecting ecosystem-level impacts of interactions. Further, advances in climate, ocean and terrestrial modelling<sup>16–18</sup> enable exploration of complex interactions, improving understanding of their roles in climate and sustainability actions and outcomes<sup>12</sup>.

Here, we concentrate on four key Earth system processes relevant to food production<sup>12</sup> that probably have already been transgressed: biogeochemical flows, biosphere integrity (BI), freshwater use and land system change. We divide BI into land, freshwater and ocean components and freshwater use into blue and green water (Methods; Figs. 1 and 2a). We thus evaluate interactions among seven terrestrial and aquatic control variables—that is, the functional indicators of the underlying Earth system processes (Fig. 2a). All included Earth system processes are bottom-up in nature, as opposed to, for example, climate change, which is a top-down process and for which interactions with other Earth system processes have been explored previously<sup>9,10</sup>.

A full list of affiliations appears at the end of the paper.



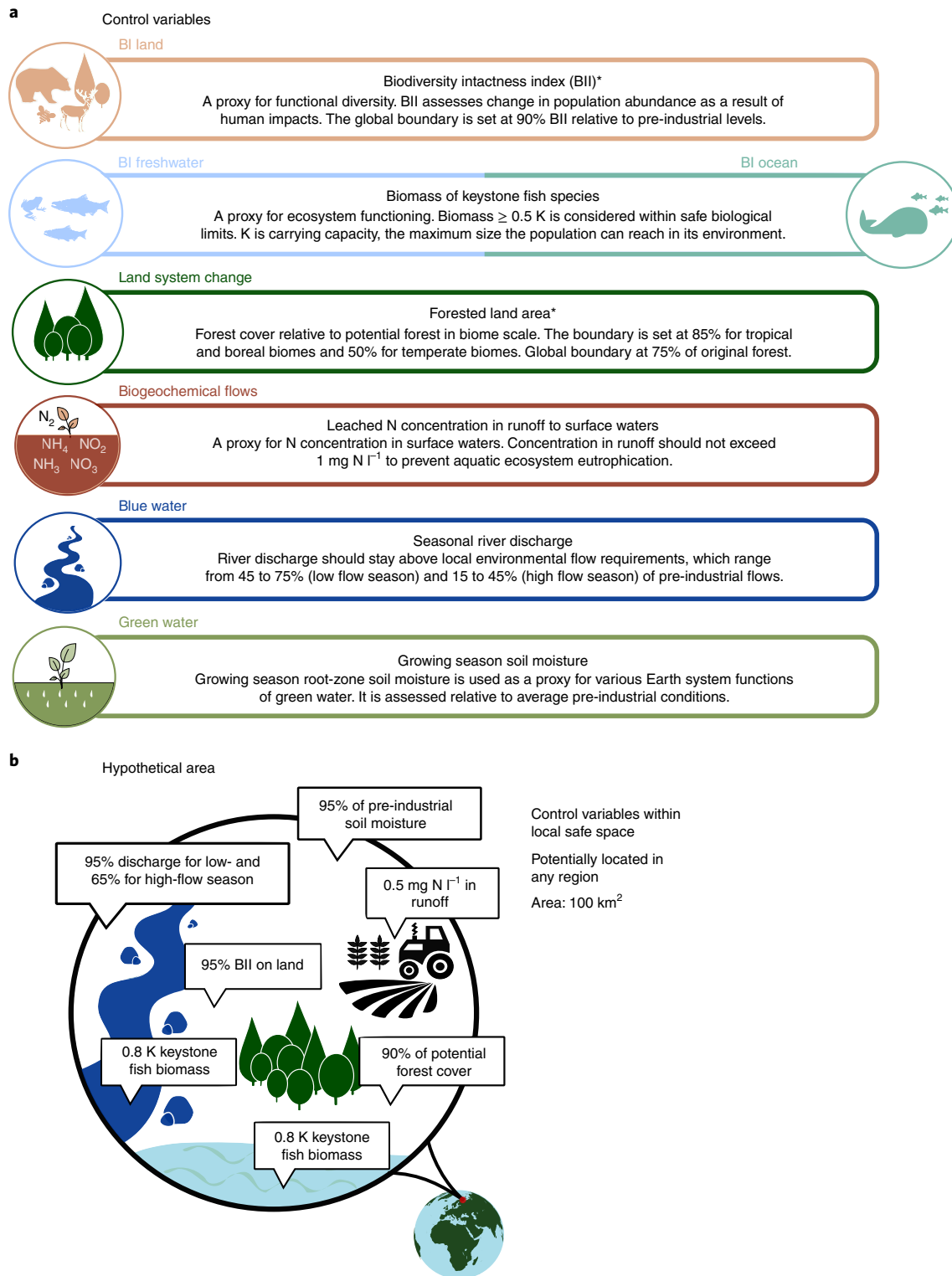
**Fig. 1 | Schematic representation of the project steps.** 1, Earth system processes relevant to food production selected as the focus of this work. 2, Expert elicitation conducted following a structured protocol. 3, Individual expert assessments aggregated to derive the final elicitation results. 4, Aggregated data used to estimate the interaction strengths and build the network of mediating mechanisms.

Our research has two major contributions: (1) understanding the richness of interactions and interaction mechanisms among Earth system processes relevant to food production and (2) quantifying the strength of these interactions by expert elicitation. Our map of a wider array of Earth system processes than previously available (for example, ref. <sup>9</sup>) provides unprecedented information on the interaction mechanisms and benefits Earth system modelling among other fields. Our quantification of interaction strengths advances our understanding of the safe operating space for food production, as few quantifications of these interactions are available. While ref. <sup>9</sup> provide some literature-based quantifications, model-based quantifications are rare because they are time-consuming and require focusing on a very limited set of interactions at a time. For example, ref. <sup>10</sup> quantify interactions among three Earth system processes at regional scale (climate change, surface runoff and vegetation cover), while we include seven at local scale (Fig. 1). In sum, our work increases comprehensive quantitative knowledge of Earth system interactions relevant to food production.

The expert knowledge elicitation was conducted following the IDEA (investigate, discuss, estimate, aggregate) structured elicitation protocol<sup>19</sup> (Methods). In an expert knowledge elicitation, judgements of an unknown phenomenon can be expressed

quantitatively in a statistical format<sup>20</sup> together with collecting qualitative data on the experts' reasoning behind their responses. Thus, the results can be used, for example, as model input or in decision-making when limited or no other information is available<sup>21,22</sup>. As we are very early in the process of exploring interactions among Earth system processes relevant to food production, we argue that expert knowledge is an excellent first step in gathering information accumulated through experts' training and experience. The elicitation was done for a hypothetical study area with a scenario-based technique<sup>23</sup> (Fig. 2b; Methods), guiding experts in making inferences relative to a fixed baseline. This allowed us to account for state-dependent interactions and explore a wider array of interactions compared to strictly model-based quantifications.

With this study, we provide a systems view of the interactions, their strengths and the mediating mechanisms until more model-based results become available. We envision that our results will benefit the identification and prioritization of synergistic actions on developing food systems and be useful for modelling the Earth system as well as food systems and agriculture, for natural resource managers and for the development of the planetary boundaries framework.

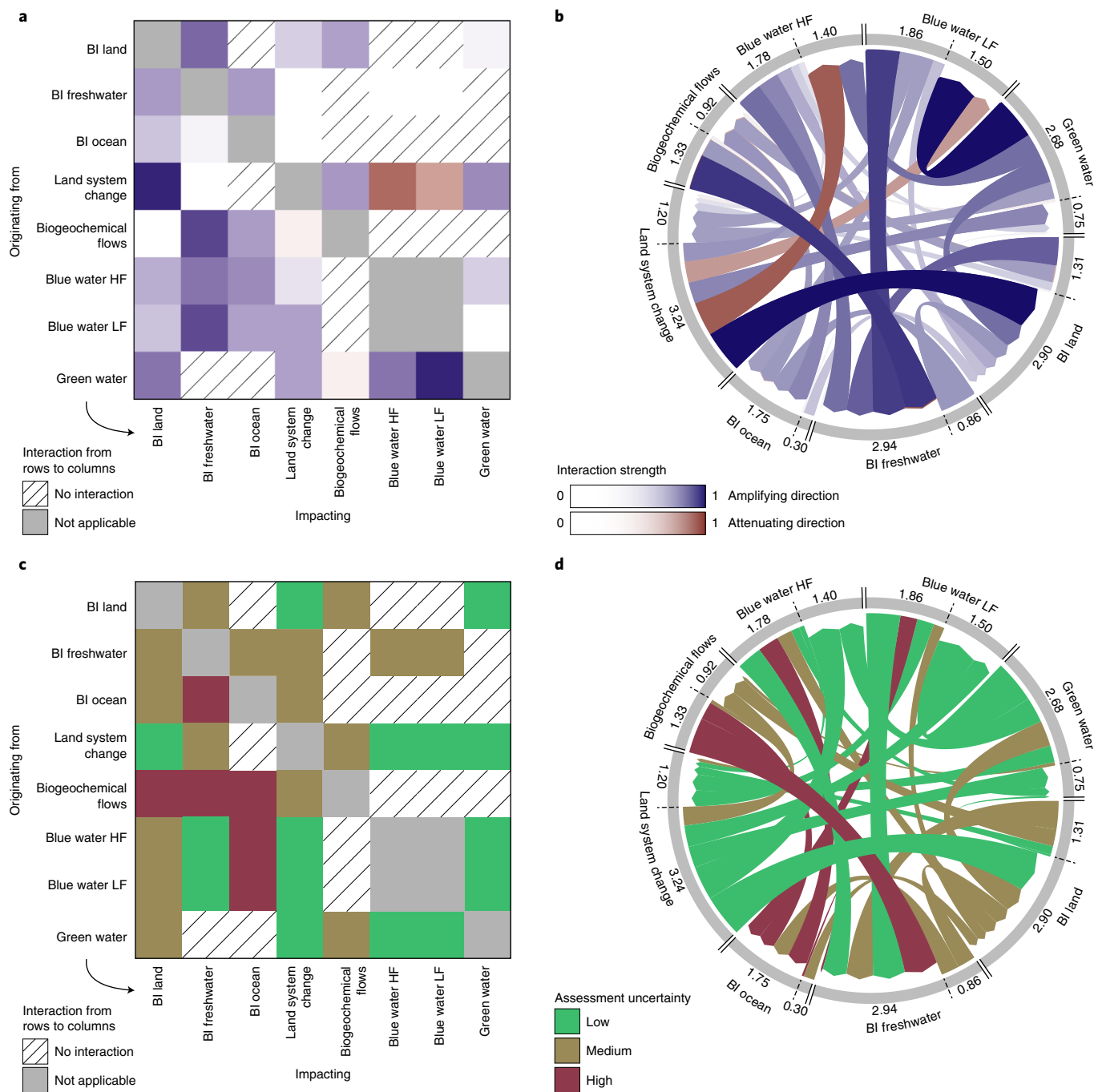


**Fig. 2 | Control variables and hypothetical study area. a**, The control variables for each of the Earth system processes used for the elicitation purposes. Control variables indicated with an asterisk are the same as defined in ref. <sup>7</sup>. For control variables without existing boundary values, safe ranges were developed and set (Supplementary Section 2). **b**, A hypothetical area of 100 km<sup>2</sup> with control variables within safe ranges was used to assess the interactions among the Earth system processes relevant to food production by experts in this scenario-based elicitation.

## Results

In the following subsections, we present the identified interactions, their strengths and roles and we describe the mechanisms mediating them. Finally, we compare our findings with relevant literature and make suggestions for future research prioritization.

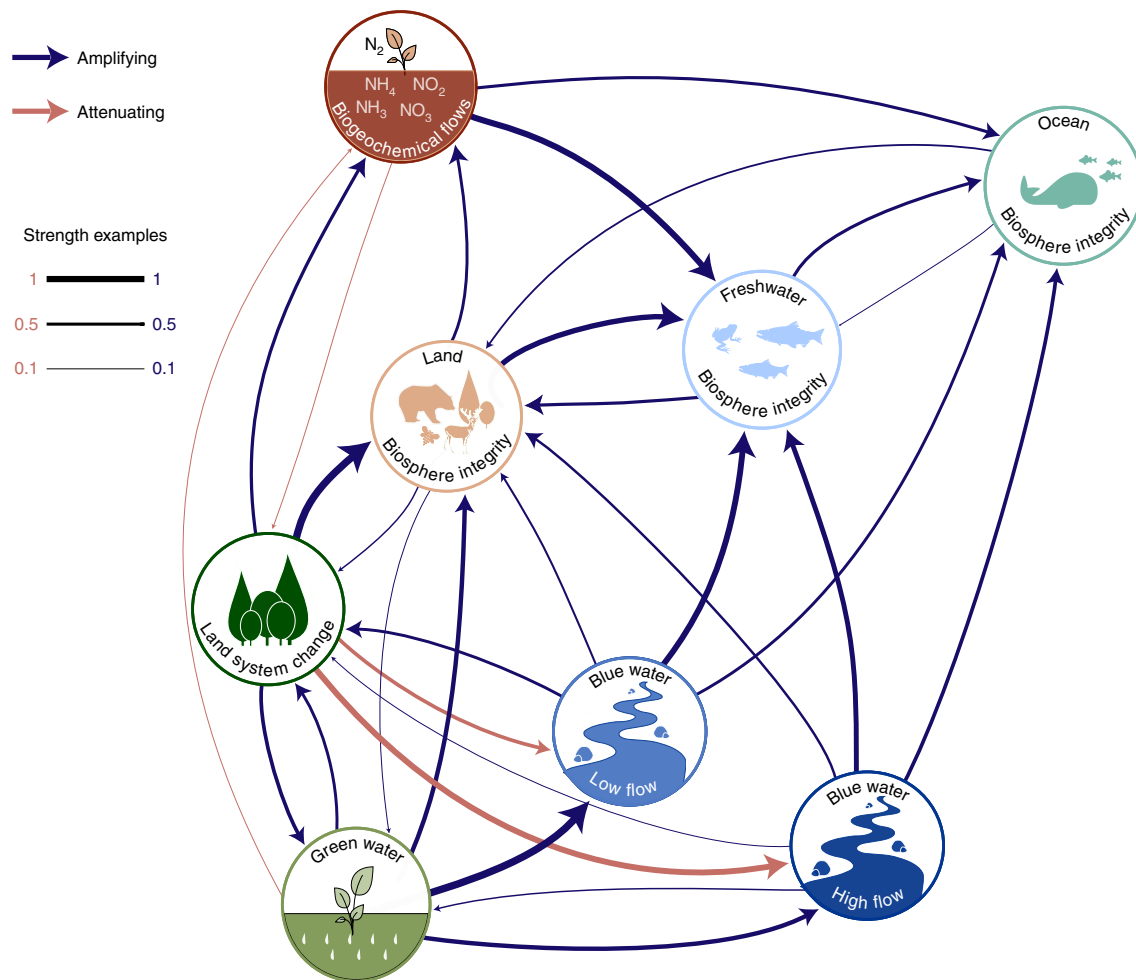
**Identified interactions and their roles.** Experts identified 37 direct biophysical interactions between the selected control variables (out of a possible total of 54), which suggests considerable local interconnections of Earth system processes (Fig. 3). Some of these interactions, such as the impacts of land system change on BI land, are



**Fig. 3 | Absolute normalized biophysical interaction strengths and associated uncertainty identified with expert knowledge elicitation. a**, Identified interactions and interaction strengths between the selected control variables, ranging from the weakest (-0) to the strongest (1). **b**, Net originating and receiving interaction strengths for each control variable. Arrow width indicates the magnitude of the interaction strength. Numbers around the circle indicate the sum for both receiving/originating. **c**, Uncertainty related to assessing the interactions for individual interactions. **d**, Uncertainty related to assessing the interactions with net originating and receiving interaction strengths. The uncertainty is evaluated on the basis of expert agreement and the number of responses per interaction (Supplementary Table 5.2 gives uncertainty criteria and categorization). BI, biosphere integrity; HF, high-flow season; LF, low-flow season. ‘Not applicable’ refers to the main diagonal in which the same control variable is represented both in the respective column and row. ‘No interaction’ refers to cases for which experts did not identify an interaction existing between these two control variables.

well known and documented (for example, refs. <sup>1,14</sup>) but many of them, such as the interactions between the aquatic (BI freshwater and BI ocean) and BI land components, have not been previously quantified (Fig. 3 and Supplementary Table 5.1). Additionally, some interactions identified in this work were considered non-existent in ref. <sup>9</sup>.

Experts estimated strong impacts on aquatic biodiversity (BI freshwater and BI ocean) originating from other Earth system processes. For example, BI freshwater was seen to be especially affected by changes in blue water, biogeochemical flows and BI land (Fig. 3). Large negative impacts on BI freshwater can be caused by, for example, increased nitrogen concentration in surface waters



**Fig. 4 | A network diagram of the identified interactions with a force-directed layout.** Nodes are arranged according to the normalized interaction strengths, with stronger connections closer together. Interactions with strength in the range of  $-0.005$ – $0.005$  are excluded from this figure.

and decreased discharge, while a decrease in BI freshwater can substantially influence BI land and BI ocean. This reflects the importance of considering all three components in future BI assessments. Green water and land system change are involved in many strong interactions (Fig. 3 and Supplementary Table 5.1): for example, a decrease in soil moisture can directly impact blue water, BI land and land system change. At the same time, soil moisture can be reduced when forest cover decreases, reinforcing the feedback effects. Land system change, as expected, is a major cause of changes in other Earth system processes, notably BI land and blue water (Fig. 3).

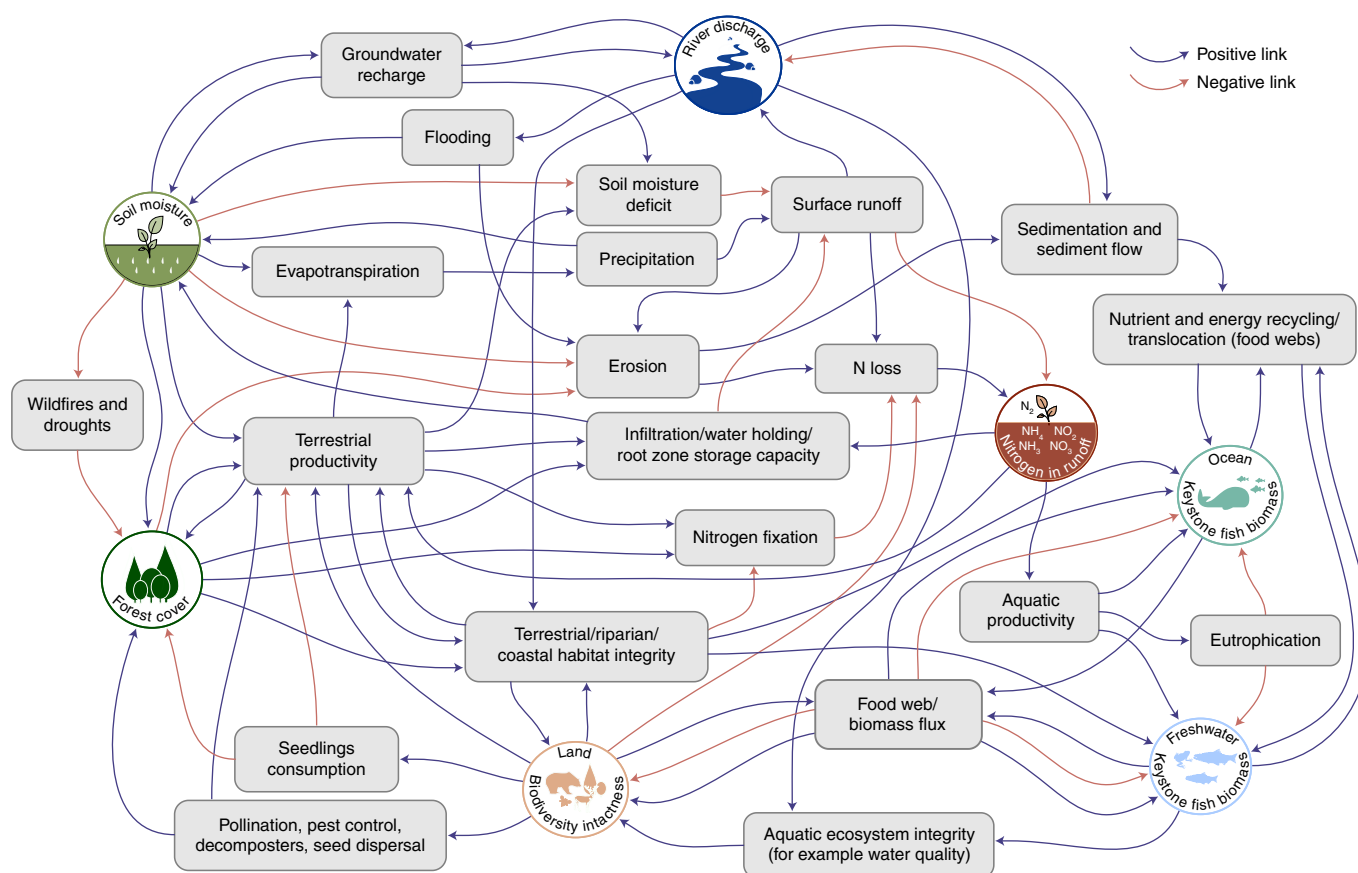
Very few interactions were found to be attenuating, which would mean that when one variable moves towards the outside of the safe space, the other variable moves towards the safe space. The interaction from land system change to blue water was the only one that experts identified as strongly attenuating, whereby a decrease in forest cover leads to increased river discharge (Fig. 3). However, experts agreed that this might hold only at the local scale, as large-scale decreases in forest cover tend to cause regionally drier conditions due to decreased precipitation<sup>24</sup>. Experts also identified a weak attenuating influence of biogeochemical flows on land system change, as increased nitrogen in runoff can boost plant productivity; however, substantial increases in nitrogen may turn the direction of this interaction to amplifying (Prioritization of interactions). As attenuating interactions are rare, parallel impacts of amplifying interactions—in which further perturbation of a control variable negatively perturbs others—are likely. Opportunistic actions

benefiting from trade-off situations, in which further perturbation of a control variable would improve the state of others, are therefore not viable but improving the state of many control variables through acting on a single variable is possible.

For seven of the interactions, the interaction strength was judged extremely weak (interaction strength  $<0.005$  on a scale 0–1). We tested whether including the extremely weak interactions in the force-directed network presented in Fig. 4 would change the results. As it did not, we excluded these interactions from further analysis and the prioritization scheme outlined in Prioritization of interactions. The weak relationships may reflect truly weak interactions but it may also be the case that they are present (and important) only in specific environments. Further, they may be more complex than the others, not following simplified linearity assumptions and therefore have not been well-characterized in existing studies (Supplementary Section 5). For further information, relevant literature for the identified interactions and all individual answers of the second elicitation round are provided in Supplementary Data.

**Identified interaction strengths in line with literature.** Seven of the 37 identified interactions (Fig. 3) were quantified at the global scale by ref. <sup>9</sup>. For these seven interactions, our study and ref. <sup>9</sup> agree on the direction of interactions, although with some differences in strength. A strict comparison between the two studies is not possible due to differences in normalization, the control variables and the spatial scale but relative comparisons are shown in Supplementary





**Fig. 5 | Expert-identified main mechanisms mediating the interactions among Earth system processes relevant to food production.** Positive links (blue) indicate that an increase (decrease) in one variable leads to an increase (decrease) in another variable. Negative links (red) indicate that an increase (decrease) in one variable leads to a decrease (increase) in another variable. The network of mechanisms is not exhaustive because some links are uncertain (Fig. 6) and dependent on impact level, spatial scale, temporal dynamics and Earth system processes beyond the scope of this study.

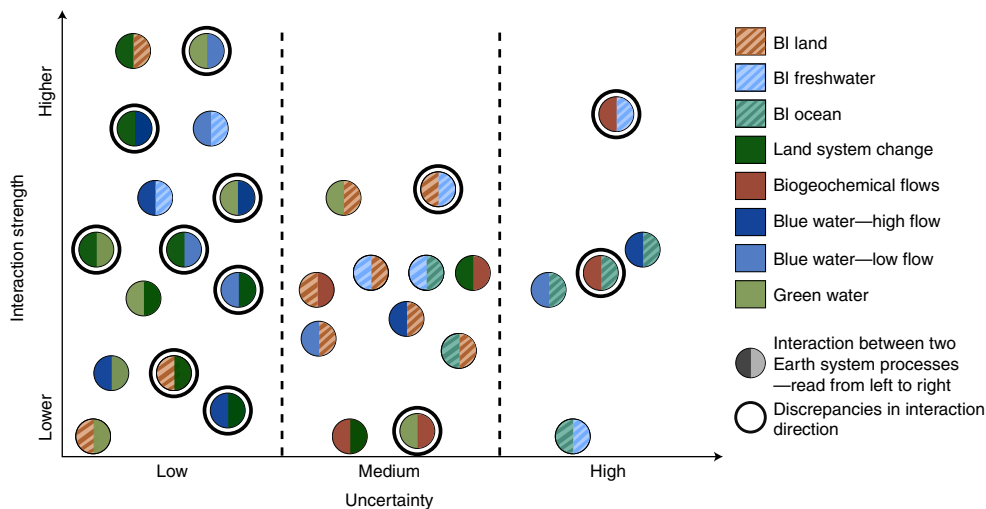
Table 6.1. For five interactions, the interaction strengths were similar (from low to high interaction strength range). For two interactions (land system change on blue water and biogeochemical flows on BI ocean), the difference in interaction strength can be attributed to the different control variables and spatial scale used. For further comparisons between our results and quantitative estimates of selected interactions, see Supplementary Section 6. The adequate correspondence between our results and literature shows that expert opinions, elicited via a rigorous and formal protocol, capture the variation that individual studies have identified. Therefore, the relative interaction strengths identified here are robust but the interaction strengths should be interpreted cautiously outside this work, preferably in conjunction with quantitative modelling.

**Receiving and originating Earth system processes.** The role of different Earth system processes in the interactions varies, as shown in the network of the identified interactions and their strengths (Fig. 4). The three Earth system processes with the greatest number of identified connections in the network are BI land, land system change and green water (8–10 out of a maximum 12; Fig. 4 and Supplementary Table 5.3). On the basis of the net receiving and originating interaction strengths (Supplementary Table 5.3), three main categories emerge: (1) processes mainly on the receiving end, meaning that they are affected by others; (2) processes mainly on the originating end, meaning that they affect others; and (3) processes that are both receiving and originating at similar

levels. This information could help in identifying impactful practical actions; for example, alleviating green water perturbations would be expected to alleviate perturbations on BI land, land system change and blue water as those receive strong interactions originating from green water.

The three BI components comprise the first group, as they receive the greatest net interaction strength (Figs. 3 and 4 and Supplementary Table 5.3). This is in line with two studies<sup>7,9</sup> that identify BI as one of the two core Earth system processes considered in the planetary boundaries framework. Land system change and green water exemplify the second category, as the greatest net interaction strength originates from them (Figs. 3 and 4 and Supplementary Table 5.3). These findings are consistent with ref.<sup>9</sup> identifying land system change as a major mediator of interactions among Earth system processes, refs.<sup>25,26</sup> suggesting that focusing only on blue water does not capture all the crucial Earth system functions of freshwater and ref.<sup>27</sup> proposing to define a green water planetary boundary. Finally, in the third category, biogeochemical flows and blue water have an important mediating role in the identified interactions, as the receiving and originating interaction strengths are more balanced (Figs. 3 and 4 and Supplementary Table 5.3).

**Mediating mechanisms.** The experts identified an array of primary and case-specific mechanisms mediating the interactions (Supplementary Section 7 and Supplementary Fig. 7.1). The main mechanisms are shown in Fig. 5, which illustrates that the interactions



**Fig. 6 | Interactions identified in the expert elicitation grouped by uncertainty and positioned relative to their strength.** The specific location of an interaction within an uncertainty zone is not significant, as uncertainty within each category is considered equal. The uncertainty is evaluated on the basis of expert agreement and the number of responses per interaction (Supplementary Table 5.2 gives uncertainty criteria and categorization). Low uncertainty,  $\geq 10$  responses per interaction; medium uncertainty, 6–9 responses per interaction and one interaction with high disagreement (coefficient of variance  $> 0.5$ ) and 11 responses; and high uncertainty,  $\leq 5$  responses per interaction. Interactions with strength in the range of  $-0.005$ – $0.005$  are excluded from this analysis.

are complex and interconnected, even when limiting the scope to Earth system processes relevant to food production. Moreover, different mechanisms can have counteracting effects on the control variables, leaving the resulting interaction to be determined by the presence, importance and characteristics of different mechanisms. For example, forest cover is negatively impacted by wildfires, droughts and seedling consumption but benefited by pollinators, seed dispersal, decomposers, soil moisture and terrestrial productivity. These mechanisms vary substantially: for example, wildfires affect forest cover extremely quickly, whereas forest growth is affected very slowly. The net interaction strength is therefore tightly dependent on which mechanisms prevail at a time. Due to this, we aimed to explore the relative importance of the different mediating mechanisms during the second elicitation round. While we were unable to make robust inferences on the matter, the limited data related to ranking, together with details and relevant literature on the identified mechanisms, are available in Supplementary Data.

Understanding the mediating mechanisms is key to finding action points to establish beneficial synergies. For example, decreasing forest cover (land system change) and soil moisture (green water) increase erosion, which further increases N loss and sediment flow, both of which ultimately lead to negative changes in BI freshwater, BI ocean and biogeochemical flows. Preventing erosion or repairing its impacts, could then be used as an effective mechanism to alleviate the pressure on many control variables at once. Other high-impact actions include, for example, improving riparian and coastal habitat integrity through conservation measures or agroecosystem integrity, which would directly affect BI freshwater and BI ocean and also promote mechanisms affecting soil moisture, river discharge and forest cover, primarily through increased terrestrial productivity and its effects on the hydrological cycle. Although impacts can be expected to diminish along long mechanism chains and vary between contexts, the rich network of mechanisms highlights that actions often affect an ensemble of the control variables instead of only one at a time.

**Prioritization of interactions.** The experts had high agreement on interaction magnitudes; the coefficient of variation in their estimates was low in all but one interaction (Supplementary Table 5.2).

The number of responses per interaction, however, varied considerably, which increases the uncertainty of the results. Due to the potential of increased bias and error owing to the lower number of responses, we created a prioritization scheme for future research on the basis of the interaction strength and uncertainty (Methods; Supplementary Table 5.2). We suggest that focus should first be given to strong interactions with limited current knowledge and/or high uncertainty. Those interactions could unexpectedly breach the safe operating space, as the interaction strength is high but relatively little is known about the mediating mechanisms. In addition, we highlighted interactions with discrepancies in expert opinions regarding whether they were amplifying or attenuating. These discrepancies could be related to temporal scales (variability in the occurrence time of processes), different regional contexts (variability in local environmental factors) or different mediating mechanisms (variability in which mechanisms dominate the net interaction). For such interactions, regional-scale studies should be prioritized to identify the importance and temporal scales of the involved mechanisms. In cases of discrepancies, we determined the interaction direction in Fig. 3 by the majority of responses.

The high-uncertainty interactions from biogeochemical flows to BI freshwater and BI ocean are prime examples of expert opinion discrepancies (Fig. 6). Some experts considered the positive impacts on primary productivity and ecosystem functioning from added nutrients—before a critical limit is passed and impact becomes negative—while others considered added nutrients causing immediate negative impacts. This critical limit is very context-specific, including factors such as the denitrification potential of riparian wetlands<sup>28</sup>. An appropriate critical limit might vary among environments—thus, this interaction needs more case-by-case examination. In addition, including elements such as phosphorus<sup>29</sup> could substantially modify the strength of biogeochemical flows interactions on BI freshwater and BI ocean<sup>30</sup>. Other notable uncertainties include, for example, the interaction from blue water to BI ocean, which was established but which is especially uncertain due to the low number of responses.

Medium-uncertainty interactions related to the BI components deserve further attention due to them being overall strongly impacted (Fig. 6 and Receiving and originating Earth system processes)

and their central role in the Earth system<sup>7,9</sup>. This applies in particular to interactions involving the aquatic BI components, as they have only recently been discussed and explored in relevant literature (for example, ref. <sup>11</sup>). Most interactions related to land system change, blue water and green water are low-uncertainty interactions (Fig. 6), as expected given that these Earth system processes and their relationships have been widely explored (see Supplementary Data for relevant literature). However, some interactions with a greater number of responses (for example, land system change on blue water) show discrepancies related to the direction of the interactions, even though agreement on the magnitude of the interaction strength is high (Fig. 6). Again, this could be attributed to differences in contexts and timescales, which highlights that case-by-case approaches are required for operationalizing our findings.

## Discussion

We have identified interactions and mediating mechanisms between Earth system processes relevant to food production at the local scale and quantified their strengths using expert knowledge elicitation. Out of 54 possible interactions, 37 were identified by the experts. BI freshwater, BI ocean and green water were found to have crucial roles in the interactions. In addition, our results highlight the major role of land system change impacting other Earth system processes and the high impact of biogeochemical flows on BI freshwater and BI ocean (Figs. 3 and 4). Our study maps the mechanisms involved in interactions among these many Earth system processes in detail, revealing a complex and interconnected mechanisms network (Fig. 5). Taking advantage of synergistic mechanisms, through which many control variables can be affected by change in one, is key to limiting further anthropogenic perturbations on the Earth system. Our categorization of the interactions on the basis of their strengths and associated uncertainty (Fig. 6) can guide future research.

**Bridging the local and global scales.** By illuminating the complex interactions between the Earth system processes relevant to food production, our results highlight the need for an holistic approach to environmentally sustainable food production and suggest potential future developments of the planetary boundaries framework. The planetary boundaries were developed to understand the Earth system limits within which humanity can thrive<sup>6,7</sup> and the framework has often been seen as a connector between Earth system and sustainability sciences<sup>31</sup>. At the same time, the framework has been criticized for being a strictly top-down concept, while many of the relevant Earth system processes and stresses occur locally—although with global importance<sup>32–34</sup>. Moreover, interactions between many of the Earth system processes take place on a local-to-regional scale. Without understanding these interactions and the mechanisms mediating them, governance that aims to keep us within safe global boundaries could be critically misdirected and defeat its purpose.

Our findings reveal the directions and strengths of many interactions between Earth system processes relevant to food production. Since most interactions identified here were amplifying ones (Fig. 3), the safe operating space may be narrowed by one Earth system process degrading other Earth system processes. However, finding positive synergies is also possible: alleviating pressures on one Earth system process, such as land system change, can simultaneously alleviate pressures on others, such as BI and biogeochemical flows, through the complex web of interactions among them (Figs. 3–5; ref. <sup>9</sup>). By better understanding both the strength and the mediating mechanisms of these interactions, our results have clear implications for sustainability management in (1) avoiding unintended consequences of actions; (2) emphasizing synergistic solutions to sustainability challenges; and (3) identifying and prioritizing management of the core processes that most impact and are impacted by other Earth system processes. Our study is thus

an important step towards enabling more comprehensive consideration of Earth system processes across sectors and disciplines until more model-based information on interactions becomes available to enrich and improve our findings.

Our work could help to adapt the planetary boundaries framework to the scale at which management of Earth system processes—such as conservation of natural areas, limitation of nitrogen application and regulation of water withdrawals—typically occurs. Staying within the planetary boundaries and thereby keeping humanity within the global safe operating space, requires adjusting local safe operating spaces with respect to the related Earth system processes and interactions shown here. Our findings may also augment local and regional food system models and assessments. Detailed, model-based quantification of interactions between Earth system processes is time-consuming and few are currently available<sup>10</sup>. Therefore, incorporating our findings into models, until other sources of information become available, could enable quantifying aspects beyond the use of resources only—such as the substantial impacts on BI. Taking advantage of all data—while acknowledging the related uncertainties—should be preferred to waiting for the ‘perfect data’ and potentially delaying action, thereby causing irreversible damage.

At the same time, it should be noted that the mechanisms mediating the interactions, interaction strengths and even the interaction directions vary in different contexts, while the results presented here show only their aggregate outcomes. Further, a better understanding of local-scale mechanisms potentially cascading to planetary-scale feedbacks is needed for prioritizing management actions. Globally consistent datasets for many of the control variables are already available (for example, refs. <sup>1,35–40</sup>). These datasets can be used in local-scale models to validate our interaction strengths while retaining global consistency, which would reduce the uncertainty in comparing results between different local contexts. However, this endeavour would require case-specific knowledge and sophisticated models. Therefore, while we have validated our results with comparisons to ref. <sup>9</sup> and various case studies (Supplementary Section 6), we leave extensive local-scale validation for future work. Here, we provide both the interaction strengths and mechanisms together with a roadmap of prioritization that can guide future efforts.

**Importance of expert knowledge.** In modelling, process dynamics should be represented in mathematical terms but an exact representation of the Earth system is beyond our current capabilities and models will necessarily be based on simplified process descriptions. Deciding which subprocesses to model, what assumptions to make and how to represent interactions between the processes when all mediating mechanisms cannot be fully modelled are all expert decisions<sup>41</sup>. Furthermore, as we have shown here, the mediating mechanisms vary with local context. This is also reflected in an expert elicitation; the experts have their own backgrounds that affect their views and decisions<sup>42</sup>—such as different fields of study or familiarity with different natural environments—which may lead to apparent discrepancies.

This expert knowledge elicitation revealed that not all experts agreed on the direction of some interactions (Fig. 6). Such occurrences are valuable, as they document differing views and beliefs about the same process as well as statistical variability. Combined, expert responses provide holistic views—beyond statistical variability—of complex phenomena that are difficult to study in quantitative terms. Even though modelling has traditionally been based on collected quantitative data, the further we increase the complexity of what we aim to model, the higher the data demand becomes. Thus, using expert knowledge has become common and is applied in different fields and for various purposes—for example, in ecosystem modelling<sup>43</sup>, risk assessment<sup>44</sup> and even augmenting machine learning models<sup>45</sup>. Our expert elicitation on complex Earth system



process interactions is a notable step forward in better understanding of processes that would otherwise remain unknown.

## Methods

The following section describes the main steps in our methodology as illustrated in Fig. 1. We first explain the control variables we used for each of the Earth system processes of interest (Fig. 2a) and the hypothetical study area (Fig. 2b) and introduce the structured elicitation protocol. We further describe the methods used to aggregate and normalize the elicitation results to quantify the interaction strengths. For further details, especially related to the elicitation process and protocol, see Supplementary Sections 1–4.

**Definitions of Earth system process control variables.** For the BI land component, we retained the control variable used by ref. 7, the biodiversity intactness index, a proxy variable for functional diversity (Fig. 2a). Agricultural impacts on BI have been demonstrated at a local scale<sup>1</sup> and retaining the existing variable therefore fits our purposes well. The BI freshwater and BI ocean components were included on the basis of recent suggestions of their importance in BI assessments<sup>9,11</sup>. For both BI freshwater and BI ocean, we used the status of keystone fish species biomass as a control variable. Others<sup>9</sup> assign ecosystem functioning as the control variable and use global fisheries status as a proxy for some of the interactions they identify; thus, our control variable is similar as they both assess biomass levels. In aquatic environments, keystone fish species act as a robust indicator of ecosystem functioning and play a critical role in determining community structure<sup>46–49</sup>. In addition, freshwater habitats in particular have experienced a substantial decline in biodiversity due to human activities and environmental change<sup>50,51</sup>. Therefore, keystone fish biomass can act as a control variable to assess the aquatic components of BI.

The control variable for land system change is forested land area relative to potential forest cover (that is, assuming no human land cover change; Fig. 2a)—a variable retained from ref. 7. For biogeochemical flows, we assessed nitrogen, using leached inorganic N concentration in runoff to surface waters as the control variable<sup>52</sup>. For blue water, the control variable used is river discharge, relative to the pre-industrial average. In addition, to account for seasonal variation in river flows, we separated the blue water interactions into effects during high- and low-flow periods. While others<sup>7</sup> propose maximum allowable water withdrawals, we focused on the flow remaining in rivers after any discharge alteration. Extending the control variable beyond withdrawals captures discharge alteration due to both direct human impacts, such as water extraction<sup>53</sup> and indirect human impacts, such as climate change<sup>54</sup> and changes in atmospheric moisture recycling<sup>55</sup>. For green water, the control variable we used is root-zone soil moisture during the growing season relative to the pre-industrial growing season average (Fig. 2a), similar to the control variable suggested in ref. 27. Though green water is not identified as a separate control variable within the freshwater use boundary of the original planetary boundaries framework, recent research<sup>25,26</sup> proposes that focusing only on blue water does not capture all crucial Earth system functions of freshwater and thus we considered green water to be indispensable. For more details on the control variables used, see Supplementary Section 2.

**Elicitation process.** Expert knowledge elicitation has been applied within various fields of environmental sustainability-focused research (for example, refs. 56–60) and its suitability for natural resources management has been demonstrated (see for example, applications in refs. 61–63). With an elicitation, we can formulate expert knowledge and beliefs about potential uncertainties into a probabilistic form<sup>64</sup> that can subsequently be treated as empirical data<sup>65</sup> and used for modelling purposes when other data are unavailable.

Here, we followed the structured IDEA elicitation protocol<sup>19</sup> for a remote expert knowledge elicitation. Structured elicitation protocols help reduce bias and error associated with heuristics that experts use when making judgements<sup>65,66</sup>. The IDEA protocol is a structured modified Delphi approach that leads to improved judgements when a diverse group of engaged experts participate<sup>21</sup>. It combines the benefits of Delphi<sup>61,67</sup> and four-step elicitation processes<sup>67–69</sup>, which in combination has been shown to improve judgements<sup>65,70,71</sup>. Our elicitation process consisted of two anonymous elicitation rounds, between which was an online discussion round using pseudonyms (Fig. 1). Details of the elicitation protocol are available in Supplementary Section 1.1 and Supplementary Table 1.2. The discussion round is a critical part of the process, as it decreases linguistic ambiguity, promotes critical thinking and shares evidence. The IDEA protocol integrates elicitation and discussion because there is evidence that, when a discussion stage is included in a standard Delphi process, the response accuracy of the second elicitation round increases<sup>72</sup>. The discussion phase also proved to be beneficial as it decreased ambiguity regarding the questions and increased agreement among experts (Supplementary Section 1.4 and Supplementary Fig. 1.1 with details related to the discussion round and Supplementary Table 1.5 with the agreement metric in the two elicitation rounds).

Participants were recruited on the basis of their expertise in any of the Earth system processes considered in this study and their knowledge of the planetary boundaries framework. For the recruitment process, relevant literature on Web of

Science was searched and, once a list of 200 potential participants was reached, the literature-based recruitment was concluded (Supplementary Section 1.3). All 200 potential participants were invited to participate in the elicitation via e-mail. In addition, the ‘snowballing method’ was used: when potential participants were first contacted, they were asked to suggest further suitable participants. This resulted in inviting 31 additional potential participants. Earlier planetary boundaries work has focused on certain Earth system processes (especially land system change, blue water and BI land) and, thus, representation of all desired disciplines was not equal and was reflected in the number of answers received for each interaction. In total, 37 experts completed the elicitation process, resulting in 5–19 answers for each of the identified interactions. Literature suggests that a minimum of four to six experts should be included in an elicitation<sup>73,74</sup>, with empirical evidence suggesting that only minor improvements are gained when having more than 6–12 participants<sup>74–76</sup>. For details on the recruitment process and experts’ background see Supplementary Table 1.3 and for total number of answers per interaction see Supplementary Table 1.4.

The remote expert elicitation was performed with a web-based application specially developed for this purpose using the ‘Shiny’ R package<sup>77</sup>. Although it comes with its own challenges related especially to usability and user experience, the benefits of a custom-made application are that it minimizes the amount of material shared with participants and can be fully tailored to a specific task. The web application (available at [https://chrysa11.shinyapps.io/shiny\\_exp\\_elic/](https://chrysa11.shinyapps.io/shiny_exp_elic/)) displayed everything a participant needed to complete the full elicitation process, consisting of a consent form, background information on the elicitation process, the Earth system processes, the control variables to be assessed, a question example and a dashboard for selecting specific interactions and collecting the inputs.

Experts were asked to evaluate the interactions within the hypothetical area and to elaborate on their thinking process behind the provided answers. A scenario-based approach is particularly constructive when knowledge is undeveloped at a theoretical level<sup>23</sup>, such as in our case, in which exploration of the complex interactions between Earth system processes is still at an early stage. Due to the large number of potential interactions explored and to minimize complexity and time required from the participants to complete the elicitation, we focused only on one scenario in which all Earth system processes are within safe limits (Supplementary Section 2). Additionally, experts had the possibility to set this hypothetical scenario in a region of their choice for their responses.

The questions asked to the experts followed a four-step format. An example question is provided in Supplementary Section 1.2 and all elicitation questions can be explored by accessing the web application. For each interaction, we asked how a change  $\Delta X$  in the control variable ( $X$ ) would alter the current level of another control variable ( $Y$ ). The experts first gave their estimates for the lower and upper plausible values and then their best estimate. In addition, a confidence interval (CI) for the provided estimates was asked. The upper and lower plausible values describe the limits of an expert’s CI; for example, assigning a 70% CI means that the expert believes that there is a 70% probability that an interaction strength value would fall within the interval of the upper and lower value, with the best estimate as the most likely value. This format helps experts to construct and convert their knowledge into a quantitative form<sup>19</sup>. Participants were encouraged to provide input only for the interactions they felt best fit their expertise.

**Aggregation of expert opinions.** Commonly, applications of the IDEA protocol use quantile aggregation in determining the aggregate value of many individual expert responses<sup>19,71</sup>. Although ref. 71 showed that other aggregation methods could lead to less overconfident estimates, they also note that quantile aggregation is simple and informative in providing the best estimate without entailing additional distribution assumptions. As our main results focus on the best estimates, we deemed quantile aggregation an appropriate method to aggregate the expert responses. Before the quantile aggregation, we fit expert responses with a PERT distribution<sup>78</sup> to explore regional divergence among expert opinions. The PERT distribution, which creates a smooth distribution based on three parameters—the lower, upper and best (most likely) value—is a suitable distribution to fit when following the four-step question format that specifically asks for these estimates. All expert answers that did not show substantial regional divergence based on the PERT distribution were then used to perform a quantile aggregation for the lower, best and upper values with a CI of 80% (Supplementary Table 4.2), as described in the IDEA protocol practical guide<sup>19</sup>.

Calibrating the experts would have been a very challenging endeavour, as data for a similar situation from a known system are not available to our knowledge. Additionally, finding a single or few test questions that could fit all expert backgrounds would also have been difficult. One option that we did not want to opt in for was weighting experts by their academic position, as it is a highly ambiguous criterion for performance. Thus, expert opinions were aggregated with an unweighted median of the PERT distribution fitted on the basis of the individual responses. The median was selected instead of the mean to minimize the effect of outliers when equally weighting small groups<sup>19</sup>. Experts could also provide an example region and free-form details in their assessment when quantifying an interaction (Supplementary Section 1.2). This possibility was made available with the initial goal that if sufficient regional input became available, region-specific interaction estimates could be investigated. However, regional

inputs were insufficient in number and the results for each interaction are therefore a mix of region/non-region-specific answers representing a world-generic average interaction strength. To consider differences between the non-region-specific and region-specific answers that could lead to lost or skewed information if ignored during aggregation, the following steps were performed for each of the interactions:

- (1) For each expert, all estimates (best, lower, upper, CI) were standardized to 100% CI with linear extrapolation<sup>67,79</sup> on the basis of the CI they provided. This standardization was performed to enable fitting a PERT distribution.
- (2) Non-region-specific best, lower and upper values were aggregated with an unweighted median.
- (3) A PERT distribution was drawn with the 'mc2d' R package<sup>78</sup> for the non-region-specific aggregated values.
- (4) A PERT distribution was drawn for each non-region and region-specific set of estimates (lower, upper, best).
- (5) Each non-region-specific distribution was compared to the non-region-specific aggregated distribution with the Kullback–Leibler divergence metric within the 'LaplacesDemon' R package<sup>80</sup>. The 95th percentile of divergence values were used as the limit for aggregation acceptance for the region-specific distributions.
- (6) Each region-specific distribution was compared to the non-region-specific aggregated distribution with the Kullback–Leibler divergence metric.
- (7) Region-specific distributions with divergence below the limit for aggregation acceptance were accepted for aggregation. These region-specific responses were thus considered statistically similar enough with the non-region-specific responses and viable to include in aggregation.
- (8) All non-region-specific and accepted region-specific values (lower, upper and best) were aggregated with an unweighted median.

The final aggregated values were used to estimate the interaction strengths as described in the following section. The region-specific expert responses that were not aggregated due to being statistically too divergent are available in Supplementary Table 3.1. These single-region-specific answers were not sufficient to make robust inferences but, combined with relevant literature or other available data, they could still be useful for other studies.

**Estimating interaction strengths between control variables.** To estimate interaction strengths, we first normalized the control variables relative to the theoretical natural state for each of the control variables  $x = X/X_{ns}$  (Supplementary Table 1.1 and Supplementary Table 4.1) and then estimated their interaction strength as  $s = \Delta y/\Delta x$  with the above normalization for every direct interaction between two control variables  $X \rightarrow Y$ , where  $x$  is the normalized state,  $X$  the current state,  $X_{ns}$  is the theoretical natural state for each control variable,  $\Delta x$  is the change in the normalized control variable  $X$  and  $\Delta y$  the normalized change caused in  $Y$  by the change in  $X$ . Only direct interactions were used for the normalization, while indirect interactions were excluded to remove double counting (Supplementary Section 4). With this approach, we quantified the absolute normalized interaction between two control variables. By this normalization, we can better assess the impact of a change in  $\Delta X$  on  $Y$  and how this could contribute to  $Y$  more rapidly approaching the outer border of its safe range. The significance of this absolute interaction on how quickly the local safe operating space could be transgressed would depend on local critical limits for each of the variables, which are highly context-specific—for example, ref.<sup>81</sup> describe local critical limits for BI that are variable in different biomes. Thus, further case-specific investigations would be required to evaluate this, which is outside the scope of this article.

The normalization of interactions related to biogeochemical flows posed greater challenges compared to others because of the selected control variable. On the basis of the nitrogen concentration in surface waters that EU member states use to define fair ecological status<sup>82</sup> and the upper critical limit defined by ref.<sup>82</sup>, we used a concentration of 2.5 mg l<sup>-1</sup> of dissolved inorganic N as the theoretical natural state used in the normalization. In contrast to the other control variables that move from the safe range towards zero, nitrogen moves outside the safe range from zero to higher values, as nitrogen concentration increases while the other control variables' states decrease (Supplementary Table 4.1). As a result, the interaction strength values of amplifying interactions related to biogeochemical flows are negative as the variables move to opposite directions and values of attenuating interactions are positive as the variables move to the same direction. The contrary is the case for all other control variables as well as for the interactions not involving biogeochemical flows. In the main results, the sign of the interactions is not highlighted but only the direction of either being amplifying or attenuating. Additionally, in the Results, we present the interaction strengths with the aggregated best estimates, while the 80% CI for  $\Delta y$  caused by  $\Delta x$  can be found in Supplementary Table 4.2.

**Limitations of expert knowledge elicitation.** Both laypeople and experts are sensitive to subjective biases<sup>83,84</sup>. Moreover, the reliability of expert judgements depends on who participates and how questions are posed<sup>19</sup>. For this expert elicitation, we invited leading experts within the planetary boundaries framework and whose judgement was supported by authorship of relevant scientific publications. Despite the limitations of such non-model-based approaches, expert

opinions are valuable<sup>85</sup>, especially in this case where modelling capacity is currently too limited to handle all the complexity of the Earth system<sup>7,86</sup>; expert opinions are thus necessary to advise on such critical matters<sup>21,22</sup>. Formal structured elicitation protocols, such as the one used here, have been developed to minimize the limitations and associated biases of expert judgements<sup>65,66,87</sup>. Even though a longer elicitation process is associated with declining quantity and quality of information, it appears that the benefits of following a structured protocol outweigh the potential drawbacks<sup>87</sup>. Finally, even though our expert-elicited interaction strengths would have benefited from an increased number of responses for certain interactions—as a larger number of responses is generally associated with less bias when aggregating<sup>66</sup>—we can still be confident in our assessment. This is due to the high agreement among experts after the second elicitation round (Supplementary Table 5.2) and the empirical evidence suggesting that only minor improvements are gained by having more than 6–12 participants<sup>19,74–76</sup>.

**Reporting summary.** Further information on research design is available in the Nature Research Reporting Summary linked to this article.

## Data availability

All the data produced in this study are available in the Supplementary Information and Supplementary Data and provided with the submission.

## Code availability

The analysis was performed using R studio (R v.4.0.5). The code is available upon request from the first author.

Received: 16 November 2021; Accepted: 1 July 2022;

Published online: 15 August 2022

## References

1. Newbold, T. et al. Has land use pushed terrestrial biodiversity beyond the planetary boundary? A global assessment. *Science* **353**, 288–291 (2016).
2. Leclère, D. et al. Bending the curve of terrestrial biodiversity needs an integrated strategy. *Nature* **585**, 551–556 (2020).
3. Conijn, J. G., Bindraban, P. S., Schröder, J. J. & Jongschaap, R. E. E. Can our global food system meet food demand within planetary boundaries? *Agric. Ecosyst. Environ.* **251**, 244–256 (2018).
4. *The State of World Fisheries and Aquaculture: Sustainability in Action* (FAO, 2020).
5. Campbell, B. M. et al. Agriculture production as a major driver of the Earth system exceeding planetary boundaries. *Ecol. Soc.* **22**, 8 (2017).
6. Rockström, J. et al. Planetary boundaries: exploring the safe operating space for humanity. *Ecol. Soc.* **14**, 32 (2009).
7. Steffen, W. et al. Planetary boundaries: guiding human development on a changing planet. *Science* **347**, 1259855 (2015).
8. Hughes, T. P., Carpenter, S., Rockström, J., Scheffer, M. & Walker, B. Multiscale regime shifts and planetary boundaries. *Trends Ecol. Evol.* **28**, 389–395 (2013).
9. Lade, S. J. et al. Human impacts on planetary boundaries amplified by Earth system interactions. *Nat. Sustain.* **3**, 119–128 (2020).
10. Lade, S. J., Fetzer, I., Cornell, S. E. & Crona, B. A prototype Earth system impact metric that accounts for cross-scale interactions. *Environ. Res. Lett.* **16**, 115005 (2021).
11. Nash, K. L. et al. Planetary boundaries for a blue planet. *Nat. Ecol. Evol.* **1**, 1625–1634 (2017).
12. Gerten, D. & Kumm, M. Feeding the world in a narrowing safe operating space. *One Earth* **4**, 1193–1196 (2021).
13. Zipper, S. C. et al. Integrating the water planetary boundary with water management from local to global scales. *Earth's Future* **8**, e2019EF001377 (2020).
14. Heck, V., Hoff, H., Wirseni, S., Meyer, C. & Kreft, H. Land use options for staying within the planetary boundaries—synergies and trade-offs between global and local sustainability goals. *Glob. Environ. Change* **49**, 73–84 (2018).
15. Li, M., Wiedmann, T., Fang, K. & Hadjikakou, M. The role of planetary boundaries in assessing absolute environmental sustainability across scales. *Environ. Int.* **152**, 106475 (2021).
16. Christensen, V. & Walters, C. J. Ecopath with Ecosim: methods, capabilities and limitations. *Ecol. Modell.* **172**, 109–139 (2004).
17. Schipper, A. M. et al. Projecting terrestrial biodiversity intactness with GLOBIO 4. *Glob. Change Biol.* **26**, 760–771 (2020).
18. Drüke, M. et al. CM2Mc-LPJmL v1.0: biophysical coupling of a process-based dynamic vegetation model with managed land to a general circulation model. *Geosci. Model Dev.* **14**, 4117–4141 (2021).
19. Hemming, V. et al. A practical guide to structured expert elicitation using the idea protocol. *Methods Ecol. Evol.* **9**, 169–181 (2018).
20. Iglesias, C. P., Thompson, A., Rogowski, W. H. & Payne, K. Reporting guidelines for the use of expert judgement in model-based economic evaluations. *Pharmacoeconomics* **34**, 1161–1172 (2016).

21. Burgman, M. A. et al. Expert status and performance. *PLoS ONE* **6**, e22998 (2011).
22. Morgan, M. G. Use (and abuse) of expert elicitation in support of decision making for public policy. *Proc. Natl Acad. Sci. USA* **111**, 7176–7184 (2014).
23. Low-Choy, S., James, L., Murray, J., Mengersen, K. in *Expert Knowledge and its Application in Landscape Ecology* (eds Perera, A. H. et al.) Ch. 3 (Springer, 2012).
24. Lawrence, D. & Vandecar, K. Effects of tropical deforestation on climate and agriculture. *Nat. Clim. Change* **5**, 27–36 (2015).
25. Gleeson, T. et al. Illuminating water cycle modifications and Earth system resilience in the Anthropocene. *Water Resour. Res.* **56**, e2019WR024957 (2020).
26. Gleeson, T. et al. The water planetary boundary: interrogation and revision. *One Earth* **2**, 223–234 (2020).
27. Wang-Erlandsson, L. et al. A planetary boundary for green water. *Nat. Rev. Earth Environ* **3**, 380–392 (2022).
28. Billen, G. et al. Nitrate retention at the river–watershed interface: a new conceptual modeling approach. *Biogeochemistry* **139**, 31–51 (2018).
29. Carpenter, S. R. & Bennett, E. M. Reconsideration of the planetary boundary for phosphorus. *Environ. Res. Lett.* **6**, 014009 (2011).
30. Garnier, J. et al. Hydromorphology of coastal zone and structure of watershed agro-food system are main determinants of coastal eutrophication. *Environ. Res. Lett.* **16**, 023005 (2021).
31. Downing, A. S. et al. Matching scope, purpose and uses of planetary boundaries science. *Environ. Res. Lett.* **14**, 073005 (2019).
32. Lewis, S. L. We must set planetary boundaries wisely. *Nature* **485**, 417–417 (2012).
33. Montoya, J. M., Donohue, I. & Pimm, S. L. Planetary boundaries for biodiversity: implausible science, pernicious policies. *Trends Ecol. Evol.* **33**, 71–73 (2018).
34. Biermann, F. & Kim, R. E. The boundaries of the planetary boundary framework: a critical appraisal of approaches to define a “safe operating space” for humanity. *Annu. Rev. Environ. Resour.* **45**, 497–521 (2020).
35. Rocha, J. C., Peterson, G., Bodin, Ö. & Levin, S. Cascading regime shifts within and across scales. *Science* **362**, 1379–1383 (2018).
36. Hansen, M. C. et al. High-resolution global maps of 21st-century forest cover change. *Science* **342**, 850–853 (2013).
37. Sexton, J. O. et al. Global, 30-m resolution continuous fields of tree cover: Landsat-based rescaling of MODIS vegetation continuous fields with lidar-based estimates of error. *Int. J. Digital Earth* **6**, 427–448 (2013).
38. Frieler, K. et al. Assessing the impacts of 1.5°C global warming—simulation protocol of the Inter-Sectoral Impact Model Intercomparison Project (ISIMIP2b). *Geosci. Model Dev.* **10**, 4321–4345 (2017).
39. Lin, P. et al. Global reconstruction of naturalized river flows at 2.94 million reaches. *Water Resour. Res.* **55**, 6499–6516 (2019).
40. Gerten, D. et al. Feeding ten billion people is possible within four terrestrial planetary boundaries. *Nat. Sustain.* **3**, 200–208 (2020).
41. van der Sluijs, J. in *Interfaces between Science and Society* (eds Pereira, A. G. et al.) Ch. 4 (Routledge, 2006).
42. Hoekstra, A. Y. Appreciation of water: four perspectives. *Water Policy* **1**, 605–622 (2000).
43. Reside, A. E. et al. Beyond the model: expert knowledge improves predictions of species' fates under climate change. *Ecol. Appl.* **29**, e01824 (2019).
44. Kaikkonen, L. et al. Causal approach to determining the environmental risks of seabed mining. *Environ. Sci. Technol.* **55**, 8502–8513 (2021).
45. Gennatas, E. D. et al. Expert-augmented machine learning. *Proc. Natl Acad. Sci. USA* **117**, 4571–4577 (2020).
46. Paine, R. T. Food web complexity and species diversity. *Am. Nat.* **100**, 65–75 (1966).
47. Zhao-Hua, L., Ling, M. A. & Qing-xi, G. Concepts of keystone species and species importance in ecology. *J. For. Res.* **12**, 250–252 (2001).
48. Heip, C. et al. *Marine Biodiversity and Ecosystem Functioning* (Marbef, 2009).
49. Pedersen, E. J. et al. Signature of the collapse and incipient recovery of an exploited marine ecosystem. *R. Soc. Open Sci.* **4**, 170215 (2017).
50. *Living Planet Report 2020—Bending the Curve of Biodiversity Loss* (eds Almond, R. E. A. et al.) (WWF, 2020).
51. Barbarossa, V. et al. Threats of global warming to the world's freshwater fishes. *Nat. Commun.* **12**, 1701 (2021).
52. De Vries, W., Kros, J., Kroeze, C. & Seitzinger, S. P. Assessing planetary and regional nitrogen boundaries related to food security and adverse environmental impacts. *Curr. Opin. Environ. Sustain.* **5**, 392–402 (2013).
53. Huang, Z., Yuan, X. & Liu, X. The key drivers for the changes in global water scarcity: water withdrawal versus water availability. *J. Hydrol.* **601**, 126658 (2021).
54. Gudmundsson, L. et al. Globally observed trends in mean and extreme river flow attributed to climate change. *Science* **371**, 1159–1162 (2021).
55. Wang-Erlandsson, L. et al. Remote land use impacts on river flows through atmospheric teleconnections. *Hydrol. Earth Syst. Sci.* **22**, 4311–4328 (2018).
56. Uusitalo, L., Kuikka, S. & Romakkaniemi, A. Estimation of Atlantic salmon smolt carrying capacity of rivers using expert knowledge. *ICES J. Mar. Sci.* **62**, 708–722 (2005).
57. Lenton, T. M. et al. Tipping elements in the Earth's climate system. *Proc. Natl Acad. Sci. USA* **105**, 1786–1793 (2008).
58. Roman, H. A. et al. Expert judgment assessment of the mortality impact of changes in ambient fine particulate matter in the U.S. *Environ. Sci. Technol.* **42**, 2268–2274 (2008).
59. Zickfeld, K., Morgan, M. G., Frame, D. J. & Keith, D. W. Expert judgments about transient climate response to alternative future trajectories of radiative forcing. *Proc. Natl Acad. Sci. USA* **107**, 12451–12456 (2010).
60. Chrysaifi, A., Cope, J. M. & Kuparinen, A. Eliciting expert knowledge to inform stock status for data-limited stock assessment. *Mar. Policy* **101**, 167–176 (2019).
61. Runge, M. C., Converse, S. J. & Lyons, J. E. Which uncertainty? Using expert elicitation and expected value of information to design an adaptive program. *Biol. Conserv.* **144**, 1214–1223 (2011).
62. Smith, M., Wallace, K., Lewis, L. & Wagner, C. A structured elicitation method to identify key direct risk factors for the management of natural resources. *Heliyon* **1**, e00043 (2015).
63. Hemming, V., Walshe, T. V., Hanea, A. M., Fidler, F. & Burgman, M. A. Eliciting improved quantitative judgements using the IDEA protocol: a case study in natural resource management. *PLoS ONE* **13**, e0198468 (2018).
64. Garthwaite, P. H., Kadane, J. B. & O'Hagan, A. Statistical methods for eliciting probability distributions. *J. Am. Stat. Assoc.* **100**, 680–701 (2005).
65. Cooke, R. M. *Experts in Uncertainty: Opinion and Subjective Probability in Science* (Oxford Univ. Press, 1991).
66. O'Hagan, A. et al. *Uncertain Judgements: Eliciting Experts' Probabilities* (John Wiley & Sons, 2006).
67. Adams-Hosking, C. et al. Use of expert knowledge to elicit population trends for the koala (*Phascolarctos cinereus*). *Divers. Distrib.* **22**, 249–262 (2016).
68. Ban, S. S., Pressey, R. L. & Graham, N. A. Assessing interactions of multiple stressors when data are limited: a Bayesian belief network applied to coral reefs. *Glob. Environ. Change* **27**, 64–72 (2014).
69. Firn, J. et al. Priority threat management of non-native plants to maintain ecosystem integrity across heterogeneous landscapes. *J. Appl. Ecol.* **52**, 1135–1144 (2015).
70. Mellers, B. et al. Psychological strategies for winning a geopolitical forecasting tournament. *Psychol. Sci.* **25**, 1106–1115 (2014).
71. Hemming, V., Hanea, A. M., Walshe, T. & Burgman, M. A. Weighting and aggregating expert ecological judgments. *Ecol. Appl.* **30**, e02075 (2020).
72. Hanea, A. M., McBride, M. F., Burgman, M. A. & Wintle, B. C. Classical meets modern in the IDEA protocol for structured expert judgement. *J. Risk Res.* **21**, 417–433 (2016).
73. Cooke, R. M. & Goossens, L. H. J. Expert judgement elicitation for risk assessments of critical infrastructures. *J. Risk Res.* **7**, 643–656 (2004).
74. Cooke, R.M. & Probst, K.N. *Highlights of the Expert Judgment Policy Symposium and Technical Workshop 32* (Resources for the Future, 2006).
75. Armstrong, J. S. in *Principles of Forecasting* (ed. Armstrong, J. S.) 417–439 (Springer, 2001).
76. Hora, S. C. Probability judgments for continuous quantities: linear combinations and calibration. *Manag. Sci.* **50**, 597–604 (2004).
77. Chang, W. et al. shiny: Web application framework for R. R package version 1.6.0 (2021).
78. Pouillot, R. & Delignette-Muller, M. L. Evaluating variability and uncertainty in microbial quantitative risk assessment using two R packages. *Int. J. Food Microbiol.* **142**, 330–340 (2010).
79. Bedford, T. & Cooke, R. M. *Mathematical Tools for Probabilistic Risk Analysis* (Cambridge Univ. Press, 2001).
80. Statisticat, LLC. LaplacesDemon: Complete environment for Bayesian inference. R package version 16.1.4 <https://web.archive.org/web/20150206004624/http://www.bayesian-inference.com/software> (2020).
81. Mace, G. M. et al. Approaches to defining a planetary boundary for biodiversity. *Glob. Environ. Change* **28**, 289–297 (2014).
82. Poikane, S. et al. Nutrient criteria for surface waters under the European Water Framework Directive: current state-of-the-art, challenges and future outlook. *Sci. Total Environ.* **695**, 133888 (2019).
83. Tversky, A. & Kahneman, D. Judgment under uncertainty: heuristics and biases. *Science* **185**, 1124–1131 (1974).
84. Kynn, M. The 'heuristics and biases' bias in expert elicitation. *J. R. Stat. Soc. A* **171**, 239–264 (2008).
85. Gullet, W. The precautionary principle in Australia: policy, law and potential precautionary EIAs. *Risk Health Saf. Environ.* **11**, 93–124 (2000).
86. Bauer, P. et al. The digital revolution of Earth-system science. *Nat. Comput. Sci.* **1**, 104–113 (2021).
87. Morgan, M. G. & Henrion, M. *Uncertainty: A Guide to Dealing with Uncertainty in Quantitative Risk and Policy Analysis* (Cambridge Univ. Press, 1990).



## Acknowledgements

This study was funded by the European Research Council under the European Union's Horizon 2020 research and innovation programme (grant agreement no. 819202), Aalto University School of Engineering Doctoral Programme, Maa- ja vesitekniiikan tukiry and the Academy of Finland-funded project TREFORM (grant no. 339834). M.P. was supported by the Erling Persson Family Foundation. B.I.S. is supported by a Royal Commission for the Exhibition of 1851 Research Fellowship. L.W.-E., A.T., I.F., L.S.A. and T.D. acknowledge financial support from the European 1225 Research Council through the 'Earth Resilience in the Anthropocene' project (no. ERC-2016-1226 ADG 743080). K.L.N. was supported by Australian Research Council funding (DE210100606). A.U.-L. was supported by María de Maeztu excellence accreditation 2018–2022 (ref. MDM-2017-0714), funded by MCIN/AEI/10.13039/501100011033/ and by the Basque Government through the BERCE 2022-2025 programme. J.J. was supported by the NASA GISS Climate Impacts Group and the Open Philanthropy Project. Z.S. was supported by Chinese Universities Scientific Fund (2022TC098). L.L. is supported by the Spanish Ministry of Economy and Competitiveness (MINECO) and European Commission ERDF Ramón y Cajal grant (RYC-2016-20269) and Programa Propio from the Universidad Politécnica de Madrid. S.J.L. is the recipient of an Australian Research Council Future Fellowship (project no. FT200100381) funded by the Australian Government. We would like to thank members of the Water and Development group for testing an earlier version of the elicitation web application and A. Fallon for language checking of the manuscript. A.S. was supported by the Dutch Research Council (NWO) Talent Program Grant VI.Veni.202.170.

## Author contributions

A.C. and M.K. designed the study with contributions from V.V., M. Jalava, M.P., V.S., J.P., S.L. and K.L.M. A.C. developed the web application with the shiny R package with server deployment support from M. Jalava. A.C. was responsible for the elicitation process while V.V., M. Jalava, V.S., M.P. and J.P. supported in the data aggregation and discussion phases. A.C. performed the analysis with help from V.V., M.P., V.S., J.P., M. Jalava and M.K. All other authors—L.W.-E., L.S., L.S.A., E.B., K.A.B., G.S.C., A.D.P., P.D., A.S.D., T.C.D., I.F., E.A.F., D.G., H.J., J.J., E.J., M. Jung, H.K., L.L., A.W.M., D.M.-D'C., M.M.M., K.L.N., A.V.P., N.R., B.R., S.S., B.I.S., A.S., Z.S., A.T., A.U.-L., R.J.vd.E., A.v.S., P.H.V., Y.W. and S.Z.—participated in the expert elicitation. All authors discussed the results and helped shape the research and analysis. A.C. took the lead in writing the manuscript with assistance from M.P., M.K., V.V., V.S., M. Jalava, L.W.-E. and contributions from all other authors.

## Funding

Open Access funding provided by Aalto University.

## Competing interests

The authors declare no competing interests.

## Ethics statement

The Aalto University research ethics committee does not require an ethical review statement for an expert elicitation such as the one conducted here. We thus followed the ethical guidelines for an expert elicitation provided by ref. <sup>19</sup>. All experts filled a consent form upon participation agreement, where they acknowledged that they accept the terms and conditions, as described in the form. They were given the opportunity to withdraw from the process at any stage. During the elicitation process, expert judgements and personal information was de-identified by using pseudonyms for experts. The data collected during the elicitation but not released with the article are stored securely within the Aalto University IT services. The services include a snapshot feature and regular backups, making file versions automatically to recover from unwanted deletions—tape backups provide system-level disaster recovery.

## Additional information

**Supplementary information** The online version contains supplementary material available at <https://doi.org/10.1038/s41893-022-00940-6>.

**Correspondence and requests for materials** should be addressed to Anna Chrysafi or Matti Kummu.

**Peer review information** *Nature Sustainability* thanks Roseline Remans, Steven Running and the other, anonymous, reviewer(s) for their contribution to the peer review of this work.

**Reprints and permissions information** is available at [www.nature.com/reprints](http://www.nature.com/reprints).

**Publisher's note** Springer Nature remains neutral with regard to jurisdictional claims in published maps and institutional affiliations.



**Open Access** This article is licensed under a Creative Commons Attribution 4.0 International License, which permits use, sharing, adaptation, distribution and reproduction in any medium or format, as long as you give appropriate credit to the original author(s) and the source, provide a link to the Creative Commons license, and indicate if changes were made. The images or other third party material in this article are included in the article's Creative Commons license, unless indicated otherwise in a credit line to the material. If material is not included in the article's Creative Commons license and your intended use is not permitted by statutory regulation or exceeds the permitted use, you will need to obtain permission directly from the copyright holder. To view a copy of this license, visit <http://creativecommons.org/licenses/by/4.0/>.

© The Author(s) 2022

<sup>1</sup>Water and Development Research Group, Aalto University, Espoo, Finland. <sup>2</sup>Laboratory of Ichthyology, School of Biology, Aristotle University of Thessaloniki, Thessaloniki, Greece. <sup>3</sup>Global Economic Dynamics and the Biosphere Programme (GEDB), Royal Swedish Academy of Sciences, Stockholm, Sweden. <sup>4</sup>Stockholm Resilience Centre (SRC), Stockholm University, Stockholm, Sweden. <sup>5</sup>Fenner School of Environment & Society, Australian National University, Canberra, Australian Capital Territory, Australia. <sup>6</sup>Faculty of Social Sciences, Tampere University, Tampere, Finland. <sup>7</sup>Bolin Centre for Climate Research, Stockholm University, Stockholm, Sweden. <sup>8</sup>Institute of Environmental Sciences (CML), Leiden University, Leiden, the Netherlands. <sup>9</sup>Potsdam Institute for Climate Impact Research, Member of the Leibniz Association, Potsdam, Germany. <sup>10</sup>Department of Natural Resource Sciences and Bieler School of Environment, McGill University, Montreal, Quebec, Canada. <sup>11</sup>The Bieler School of Environment, McGill University, Montreal, Quebec, Canada. <sup>12</sup>Global Water Security Center, University of Alabama, Tuscaloosa, AL, USA. <sup>13</sup>Institute for Sustainable Food, University of Sheffield, Sheffield, UK. <sup>14</sup>Department of Geography, University of Sheffield, Sheffield, UK. <sup>15</sup>Department of Life Sciences, Natural History Museum, London, UK. <sup>16</sup>Institute of Physical Geography, Goethe University Frankfurt, Frankfurt am Main, Germany. <sup>17</sup>Senckenberg Leibniz Biodiversity and Climate Research Centre Frankfurt (SBiK-F), Frankfurt am Main, Germany. <sup>18</sup>CSIRO Oceans & Atmosphere, Hobart, Tasmania, Australia. <sup>19</sup>Centre for Marine Socioecology, University of Tasmania, Hobart, Tasmania, Australia. <sup>20</sup>Geography Department and Integrative Research Institute on Transformations of Human-Environment Systems, Humboldt-Universität zu Berlin, Berlin, Germany. <sup>21</sup>Department of Agriculture, American University of Beirut, Beirut, Lebanon. <sup>22</sup>Goddard Institute for Space Studies, NASA, New York, NY, USA. <sup>23</sup>Climate School, Columbia University, New York, NY, USA. <sup>24</sup>Department of Physical Geography, Stockholm University, Stockholm, Sweden. <sup>25</sup>Baltic Sea Centre, Stockholm University, Stockholm, Sweden. <sup>26</sup>Biodiversity and Natural Resources Program, International Institute for Applied Systems Analysis (IIASA), Laxenburg, Austria. <sup>27</sup>Sustainability Science, LUT University, Lahti, Finland. <sup>28</sup>CEIGRAM/Agricultural Production, ETSIAAB, Universidad Politécnica de Madrid, Madrid, Spain. <sup>29</sup>Environmental Change Research Centre, Department of Geography, University College London, London, UK. <sup>30</sup>Department of Global Development, College of Agriculture and Life Sciences, Cornell University, Ithaca, NY, USA. <sup>31</sup>Commonwealth Scientific and Industrial Research Organisation (CSIRO) Agriculture and Food, Clayton, Victoria, Australia. <sup>32</sup>Agricultural Economics and Rural Policy Group, Wageningen University & Research, Wageningen, the Netherlands. <sup>33</sup>Department of Civil, Construction and Environmental Engineering, University of Alabama, Tuscaloosa, AL, USA. <sup>34</sup>Institute for Marine and Antarctic Studies, University of Tasmania, Hobart, Tasmania, Australia. <sup>35</sup>ITAP, University of Montpellier, INRAE, Institut Agro, Montpellier, France. <sup>36</sup>Research Group for Environmental Lifecycle and Sustainability Assessment (ELSA), Montpellier, France. <sup>37</sup>cE3c, Faculty of Sciences, University of Lisbon, Lisbon, Portugal. <sup>38</sup>The UBC School of Public Policy and Global Affairs, University of British Columbia, Vancouver, British Columbia, Canada. <sup>39</sup>Institute for Resources, Environment and Sustainability, University of British Columbia, Vancouver, British Columbia, Canada. <sup>40</sup>Department of Agricultural Economics, University of the Free State, Bloemfontein, South Africa. <sup>41</sup>Department of Crop Sciences, University of Göttingen, Göttingen, Germany. <sup>42</sup>Centre of Biodiversity and Sustainable Land Use (CBL), University of Göttingen, Göttingen, Germany. <sup>43</sup>Centre for Ecology and Conservation, College of Life and Environmental Sciences, University of Exeter, Penryn, UK. <sup>44</sup>Copernicus Institute of Sustainable Development, Utrecht University, Utrecht, the Netherlands. <sup>45</sup>College of Land Science and Technology, China Agricultural University, Beijing, China. <sup>46</sup>Institute for Sustainable Resources, University College London, London, UK.

<sup>47</sup>Basque Centre for Climate Change (BC3), Leioa, Spain. <sup>48</sup>Department of Water Management, Delft University of Technology, Delft, the Netherlands. <sup>49</sup>Department of Geography, King's College London, London, UK. <sup>50</sup>UN Environment Programme World Conservation Monitoring Centre, Cambridge, UK. <sup>51</sup>Institute for Environmental Studies (IVM), Amsterdam, the Netherlands. <sup>52</sup>Kansas Geological Survey, University of Kansas, Lawrence, KS, USA. <sup>✉</sup>e-mail: [achrysaf@bio.auth.gr](mailto:achrysaf@bio.auth.gr); [matti.kummu@aalto.fi](mailto:matti.kummu@aalto.fi)



## Reporting Summary

Nature Research wishes to improve the reproducibility of the work that we publish. This form provides structure for consistency and transparency in reporting. For further information on Nature Research policies, see our [Editorial Policies](#) and the [Editorial Policy Checklist](#).

### Statistics

For all statistical analyses, confirm that the following items are present in the figure legend, table legend, main text, or Methods section.

- |                                     |  |
|-------------------------------------|--|
| n/a                                 | Confirmed  |
| <input checked="" type="checkbox"/> | <input type="checkbox"/> The exact sample size ( $n$ ) for each experimental group/condition, given as a discrete number and unit of measurement   |
| <input checked="" type="checkbox"/> | <input type="checkbox"/> A statement on whether measurements were taken from distinct samples or whether the same sample was measured repeatedly   |
| <input checked="" type="checkbox"/> | <input type="checkbox"/> The statistical test(s) used AND whether they are one- or two-sided<br><i>Only common tests should be described solely by name; describe more complex techniques in the Methods section.</i>  |
| <input checked="" type="checkbox"/> | <input type="checkbox"/> A description of all covariates tested  |
| <input checked="" type="checkbox"/> | <input type="checkbox"/> A description of any assumptions or corrections, such as tests of normality and adjustment for multiple comparisons   |
| <input type="checkbox"/>            | <input checked="" type="checkbox"/> A full description of the statistical parameters including central tendency (e.g. means) or other basic estimates (e.g. regression coefficient) AND variation (e.g. standard deviation) or associated estimates of uncertainty (e.g. confidence intervals) |
| <input checked="" type="checkbox"/> | <input type="checkbox"/> For null hypothesis testing, the test statistic (e.g. $F$ , $t$ , $r$ ) with confidence intervals, effect sizes, degrees of freedom and $P$ value noted<br><i>Give <math>P</math> values as exact values whenever suitable.</i>                                       |
| <input checked="" type="checkbox"/> | <input type="checkbox"/> For Bayesian analysis, information on the choice of priors and Markov chain Monte Carlo settings  |
| <input checked="" type="checkbox"/> | <input type="checkbox"/> For hierarchical and complex designs, identification of the appropriate level for tests and full reporting of outcomes  |
| <input checked="" type="checkbox"/> | <input type="checkbox"/> Estimates of effect sizes (e.g. Cohen's $d$ , Pearson's $r$ ), indicating how they were calculated  |

*Our web collection on [statistics for biologists](#) contains articles on many of the points above.*

### Software and code

Policy information about [availability of computer code](#)

Data collection

Data analysis

For manuscripts utilizing custom algorithms or software that are central to the research but not yet described in published literature, software must be made available to editors and reviewers. We strongly encourage code deposition in a community repository (e.g. GitHub). See the Nature Research [guidelines for submitting code & software](#) for further information.

### Data

Policy information about [availability of data](#)

All manuscripts must include a [data availability statement](#). This statement should provide the following information, where applicable:

- Accession codes, unique identifiers, or web links for publicly available datasets
- A list of figures that have associated raw data
- A description of any restrictions on data availability

## Field-specific reporting

Please select the one below that is the best fit for your research. If you are not sure, read the appropriate sections before making your selection.

Life sciences  Behavioural & social sciences  Ecological, evolutionary & environmental sciences

For a reference copy of the document with all sections, see [nature.com/documents/nr-reporting-summary-flat.pdf](https://www.nature.com/documents/nr-reporting-summary-flat.pdf)

## Behavioural & social sciences study design

All studies must disclose on these points even when the disclosure is negative.

Study description	The study was an exploration of interactions between agriculture-important Earth system processes via an expert knowledge elicitation. Both quantitative and qualitative data were collected.
Research sample	The expert elicitation included 37 participants from Universities, NGOs and governmental organizations. The number of participants was sufficient according to relevant expert elicitation literature.
Sampling strategy	Not applicable
Data collection	The expert elicitation was conducted remotely and anonymously with an on-line web application. The researchers acted as moderators during the discussion phase.
Timing	The entire elicitation process took 20 weeks to be completed.
Data exclusions	Collected data related to tipping points and ranking of mediating mechanisms where not used for the analysis due to limited input. However, these data are available in the supplementary materials
Non-participation	Initially, a total number of 102 experts agreed to participate in the expert elicitation but 65 withdrawn from the process mainly due to time limitations.
Randomization	Not applicable

## Reporting for specific materials, systems and methods

We require information from authors about some types of materials, experimental systems and methods used in many studies. Here, indicate whether each material, system or method listed is relevant to your study. If you are not sure if a list item applies to your research, read the appropriate section before selecting a response.

### Materials & experimental systems

n/a	Included in the study
<input checked="" type="checkbox"/>	<input type="checkbox"/> Antibodies
<input checked="" type="checkbox"/>	<input type="checkbox"/> Eukaryotic cell lines
<input checked="" type="checkbox"/>	<input type="checkbox"/> Palaeontology and archaeology
<input checked="" type="checkbox"/>	<input type="checkbox"/> Animals and other organisms
<input type="checkbox"/>	<input checked="" type="checkbox"/> Human research participants
<input checked="" type="checkbox"/>	<input type="checkbox"/> Clinical data
<input checked="" type="checkbox"/>	<input type="checkbox"/> Dual use research of concern

### Methods

n/a	Included in the study
<input checked="" type="checkbox"/>	<input type="checkbox"/> ChIP-seq
<input checked="" type="checkbox"/>	<input type="checkbox"/> Flow cytometry
<input checked="" type="checkbox"/>	<input type="checkbox"/> MRI-based neuroimaging

## Human research participants

Policy information about [studies involving human research participants](#)

Population characteristics	See above
Recruitment	Participants were invited via email according to their relevant expertise and publishing history in the planetary boundaries framework. Additionally, the snowballing method was used and invited participants were asked to further suggest suitable participants.
Ethics oversight	The expert elicitation did not require an approval.

Note that full information on the approval of the study protocol must also be provided in the manuscript.